



June 2025

Horticulture

Side Dressing Vegetables and Flowers

Calla Edwards – Horticulture Agent

The bagworms are coming, the bagworms are coming!!!! These plant pests have started hatching in our area and moving out of the parent's home to establish a new home of their own. Bagworms are so named because of the "bag" they create around themselves to camouflage them from predators. This bag is created from silk they spin and small pieces of leaves they collect to protect themselves from predators. Young larva hatch typically in about mid-May and leave the bag they hatched from to find foliage to start eating. Larvae will usually feed on the plant they hatched on or one nearby but they can be carried to other plants via the wind and a long thread of silk. Bagworms will eat on just about any plant but prefer junipers or arborvitae. The best control is achieved by starting control measures two weeks after the insects have started to hatch to ensure all the larvae are feeding which means we usually can start spraying around the end of May to the mid to latter half of June. There are several active ingredients that can be used to kill bagworms including Spinosad, permethrin, acephate, and cyfluthrin. Be sure to thoroughly cover all the foliage with the spray to kill the bagworms.

Agriculture

Aquatic Plants and Their Control

Charlene Miller – Agriculture Agent/Extension Director

In a few recent quests to catch some crappie and bass, I noticed the moss is already starting to show its green presence. I also take a number of calls this year asking what the producer can do to get rid of algae or identify what is growing in the pond. There are some great resources available to help you determine what is in your pond or lagoon.

The first step in controlling aquatic plants is identification. My favorite site to visit for Aquaplant identification is [Aquaplant](#) by Texas A&M University. Their website has an excellent set of colorful pictures that you can navigate and also find ways to control the plant.

K-State Research and Extension also has an excellent publication on [Aquatic Plants and Their Control](#). Once you identify the plant, you can learn more about [chemical control options](#).

Pond information can be found on [K-State Research and Extension Wildlife Management](#) website. If you are looking to build a pond, The [Natural Resources Conservation Service \(NRCS\)](#) is the agency to contact.

Contact us:

Phone: (316) 321-9660

Web: Butler.K-State.Edu

Address: 206 N Griffith St, Ste. A, El Dorado, KS 67042

Facebook: [@ksrebutlerco](#)

Twitter: [@ButlerExtension](#)

See our full Newsletter at <https://www.butler.k-state.edu/newsletter.html>

For KSRE publications and information,

visit www.ksre.ksu.edu

Family Consumer Sciences

Fun in the Sun

Bonnie Brewer – FCS Extension Agent

Time outdoors has countless benefits for physical and mental health. Many people enjoy sports or engage in activities to improve their health. Time spent outdoors is known to help relieve stress, anxiety, and boost feelings of happiness and wellbeing. With these benefits of outdoors being well known to many, some may not know how to enjoy the outdoors while practicing sun safety.

Sun safety is important to reduce your risk of skin cancer. One in five Americans will develop skin cancer in their lifetime and nearly 20 Americans die every day from melanoma. Everyone is at risk for skin cancer, no matter their age, skin color, or gender.

Some helpful everyday preventative measures for practicing sun safety are to stay indoors or in shade between 10 a.m. and 4 p.m. when UV rays are strongest: Wearing UPF protective clothing, wide-brimmed hats, UV sunglasses, sunscreen: Seeking shade. Knowing these preventive measures is helpful, but other questions may come to mind as you prepare to be sun safe.

What about Vitamin D?

Strive to focus on foods rich in vitamin D. If you are unsure about your vitamin D levels, talk with your physician about having your levels checked through a blood test.

Is my sunscreen safe to store in a vehicle?

According to the Food and Drug Administration, when exposed to heat, the preservatives found in sunscreen break down, allowing bacteria and fungi to grow faster.

I apply a moisturizer with SPF each morning, am I covered?

Many moisturizers or foundation now have SPF ratings, but it's important to note that these do not protect all day. Just like sunscreen, to remain protected, you will need to reapply throughout the day.

Should I visit a dermatologist or my physician?

Many physicians will check the body during annual exams or when asked to do so. A physician may refer you to a dermatologist if they come across anything concerning, but it's encouraged to schedule an appointment with a health professional you trust, whether that's your physician or dermatologist.

Does a higher SPF mean more protection?

According to the MD Anderson Cancer Center at the University of Texas, SPF 15 sunscreen blocks 93% of UVB radiation, and SPF 30 blocks 97%. After that, the difference in protection is small. SPF 50 blocks 98%, and SPF 100 stops 99% of UVB rays from reaching your skin. No matter what SPF you choose, be sure to reapply often and use enough to cover all parts of your body thoroughly.

4-H & Youth Development

Madeline Wallace – 4-H & Youth Development Agent

The Butler County Fair is almost here, and now's the time to finalize your projects, double-check entry deadlines, and prepare your exhibits or animals. Practice showmanship, finish static projects early, and make sure all display and identification requirements are met. Stay organized, pack ahead, and most importantly—enjoy showcasing your hard work and having fun at the fair!



JOIN US FOR

CHOOSE HEALTH: FOOD, FUN, & FITNESS



K-STATE
Research and Extension

Butler County

July 1 - Replace Sugary Drinks
July 8- Color Your Plate
July 29 - Power Up Your Day

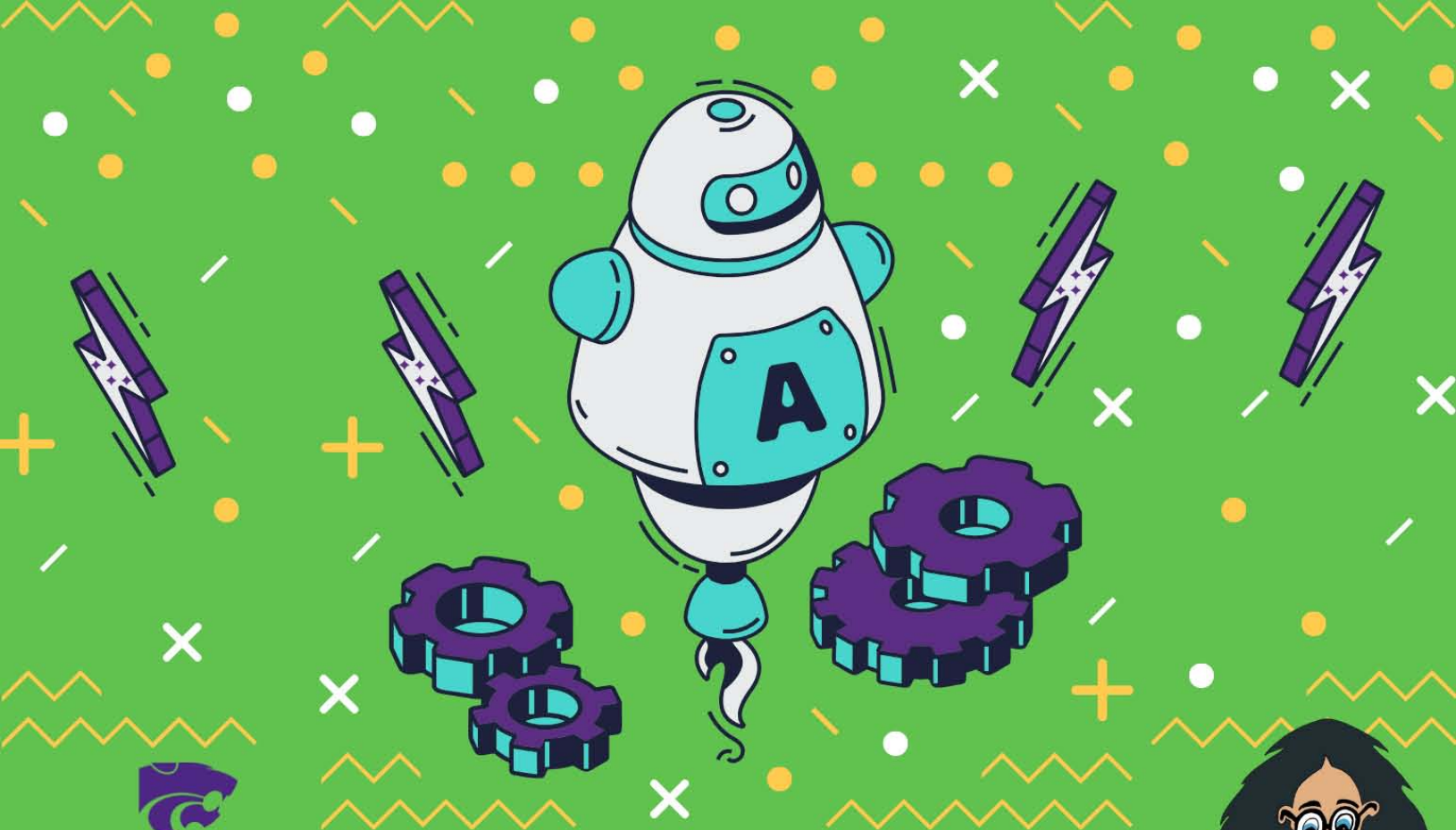


TUESDAYS, JULY 1ST, 8TH, & 29TH, 2025
11:00 A.M. - 12:00 P.M.
AGES 8-18 YEARS OLD

LEON PUBLIC LIBRARY
703 N. WEST ST.
LEON, KS 67074

K-State Research and Extension is committed to providing equal opportunity for participation in all programs, services and activities. Program information may be available in languages other than English. Language access requests and reasonable accommodations for persons with disabilities, including alternative means for communication (e.g., Braille, large print, audio tape, and American Sign Language), may be requested by contacting the event contact Madeline Wallace four weeks prior to the start of the event at 316-321-9660 or mgwallac@ksu.edu. Requests received after this date will be honored when it is feasible to do so. Language access services, such as interpretation or translation of vital information will be provided free of charge to limited English proficient individuals upon request.

K-State Research and Extension is an equal opportunity provider and employer.



K-STATE
Research and Extension
Butler County

SUMMER ROBOTICS/STEM PROGRAM

June 10 - Create PhysBots

June 17 - Build a Mars Rover and take it
through an obstacle course

June 24 - Junk Drawer Robots

Tuesdays, June 10, 17, & 24, 2025

11:00 a.m. - 12 p.m.

Ages 8-18 years old

Leon Public Library

703 N. West St.

Leon, KS 67074

K-State Research and Extension is committed to providing equal opportunity for participation in all programs, services and activities. Program information may be available in languages other than English. Language access requests and reasonable accommodations for persons with disabilities, including alternative means for communication (e.g., Braille, large print, audio tape, and American Sign Language), may be requested by contacting the event contact Madeline Wallace four weeks prior to the start of the event at 316-321-9660 or mgwallac@ksu.edu. Requests received after this date will be honored when it is feasible to do so. Language access services, such as interpretation or translation of vital information will be provided free of charge to limited English proficient individuals upon request.

K-State Research and Extension is an equal opportunity provider and employer.



Cool Art with Math & Science

**JUNE 9
JUNE 16**

**JUNE 23
JUNE 30**

JULY 7

2:00 P.M. – 3:00 P.M.

**Whitewater Memorial
Library**

**Origami, Tessellations, String Art,
Optical Illusions, and Structures**

K-State Research and Extension is committed to providing equal opportunity for participation in all programs, services and activities. Program information may be available in languages other than English. Language access requests and reasonable accommodations for persons with disabilities, including alternative means for communication (e.g., Braille, large print, audio tape, and American Sign Language), may be requested by contacting the event contact Madeline Wallace four weeks prior to the start of the event (May 5, 2025) at 316-321-9660 or mgwallac@ksu.edu. Requests received after this date will be honored when it is feasible to do so. Language access services, such as interpretation or translation of vital information will be provided free of charge to limited English proficient individuals upon request.

Kansas State University Agricultural Experiment Station and Cooperative Extension Service
K-State Research and Extension is an equal opportunity provider and employer.



K-STATE
Research and Extension



Butler
County

YOU ARE INVITED TO
BLOOM
into 4-H

June 17 | 1-5 p.m.
WITH THE BUTLER COUNTY
4-H AMBASSADORS

- *Free Day Camp for ages 5-9 years old
- *Limited to the first 20 registrations
- *Fun day of games and crafts
- *Light snack will be provided

Butler County Community/4-H Building
200 N. Griffith
El Dorado, KS

Register Here:

<https://forms.gle/CrPLTrNRXhtxcm849>



K-State Research and Extension is committed to providing equal opportunity for participation in all programs, services and activities. Program information may be available in languages other than English. Language access requests and reasonable accommodations for persons with disabilities, including alternative means for communication (e.g., Braille, large print, audio tape, and American Sign Language), may be requested by contacting the event contact Madeline Wallace four weeks prior to the start of the event May 20th at 316-321-9660 or mgwallac@ksu.edu. Requests received after this date will be honored when it is feasible to do so. Language access services, such as interpretation or translation of vital information will be provided free of charge to limited English proficient individuals upon request. Kansas State University Agricultural Experiment Station and Cooperative Extension Service K-State Research and Extension is an equal opportunity provider and employer.



WE'RE LOOKING FOR

AWARD SPONSORS

- Reserve Grand Champion Jr. Rabbit Showmanship \$35
- Grand Champion Sr. Rabbit Showmanship \$40
- Grand Champion Intermediate Clothing Construction Fashion Revue \$40
- Grand Champion Jr. Shopping in Style \$40
- Reserve Grand Champion Sr. Fashion Revue \$35
- Grand Champion Intermediate Foods & Nutrition \$40
- Reserve Grand Champion Jr. Visual Arts \$35
- Grand Champion Sr. Visual Arts \$40
- Reserve Champion Growth Portfolio Photo \$25
- Reserve Champion Career Portfolio Photo \$25

PLEASE SEND AN EMAIL TO

✉ butlerfairawards@gmail.com



Butler County Fair
EL Dorado, KS

SPECIAL CHAMPIONS

Goat Show

SUNDAY, JULY 20TH

- Show open to participants ages 14 and older with I/DD
- Participants will be paired with a 4-H/FFA goat exhibitor
- Entries are due by June 16
- More Information Coming Soon!!



BUTLER COUNTY FAIR

KIDS PEDAL PULL



Sunday July 20th



REGISTRATION AT 130PM



PULL STARTS AT 2PM



AGES 4-12 WITH WEIGHT CLASSES
RANGING FROM 30-90 LBS



KANSAS STATE SANCITIONED PULL



TOP 3 PLACES IN EACH AGE DIVISION WILL GO
ON TO THE KANSAS STATE FAIR IN SEPTEMBER!



Join Us For Our 2025 Quarterly Extension Connection

Mug Mingle



**Grab a mug and mingle with your local
Butler County Extension Staff**

Friday, July 11th from 7:45-9:00 a.m.

Save the date for October 10th

K-State Research and Extension is an equal opportunity provider and employer.

Coffee Mugs Now Available!

Get yours today at the K-State Research and
Extension - Butler County Office
206 North Griffith, Suite A
El Dorado, KS 67042



\$10.00 Each

K-STATE
Research and Extension

Butler County

K-State Research and Extension is an equal opportunity provider and employer.