

2020 Butler County Fair 4-H Division Rules

(Project requiring a pre-entry will be provided with the online pre-entry link at a later date)

SECTION I - 4-H CLUB GENERAL RULES AND REGULATIONS

ALL 4-H project questions should be directed to the Butler County 4-H Agent or Ag Agent at 316-321-9660.

Questions regarding the Livestock Auction, Rabbit Auction, Campers, and Open Class entries should be directed to: Butler County Fair Board at bucofair@gmail.com.

PRE-ENTRIES by CLUB MEMBERS are required in SOME PROJECTS. Refer to the Pre-Entry schedule. Deadline for entries is **June 26th, 2020**.

1. Exhibitors and contestants must be a participant in the Butler County 4-H program and must be enrolled in-projects by May 1. The exhibits entered in the Butler County Fair must be owned and fed, constructed, or grown by the Exhibitor. Exhibits must be the work of the current 4-H year.
2. READ ENTIRE BOOK CAREFULLY. RULE CHANGES HAVE BEEN MADE THROUGHOUT THE BOOK.
3. Cash premiums will be prorated among all ribbon groups in the 4-H divisions except as noted within the division. The Butler County Fair Board reserves the right to determine the amount of premiums in any division.
4. No exhibit or equipment used to prepare or show the exhibit (except market animals sold at base bid or auction) may be removed before 7:00 AM from the barns and from the 4-H Building, **Thursday, July 23**. Violation of this rule will result in the forfeiture of all prize money and ribbons. Fair officials will not be responsible for any exhibits or equipment that is not removed by 8:30 AM Thursday or for any broken or damaged items. ****no cleaning of livestock barns until after sale****
5. All exhibits must be in place as noted within the divisions. Club members MUST ATTACH ENTRY CARD TO ALL NON-LIVESTOCK EXHIBITS. See VISUAL ARTS: Arts & Crafts for special instructions. Livestock must have stall cards above pens or stalls. Rabbits and poultry must have entry cards attached to cages.
6. The Butler County Fair Association will make every effort to protect exhibits and the safety of exhibitors and spectators but will not be responsible for any accidents to the exhibitors or spectators, or damage to exhibits.
7. The Danish system of awards will be followed in all classes in the youth division of the fair. Exhibits will be placed within five groups: purple, blue, red, white, and green. Exhibits of superior quality will be placed in a purple group (does not apply to livestock divisions). Ribbon placing will be awarded at time of judging. Only purple ribbon exhibits in **non-livestock projects** may be considered for Champion, Reserve Champion, Grand Champion, and Reserve Grand Champion.
8. **Any Exhibitor who does not abide by Fair rules will be barred from showing, and/or must forfeit any premium ribbon or prize won. Examples include tampering with any exhibit, entering an exhibit that is not eligible for exhibit, etc.**

9. This is a 4-H Youth Event, **absolutely no alcohol is allowed!**
10. Fair Board may remove any device, exhibit and/or person that it deems unsafe.
11. Exhibitors must be able to control their animals at all times. Exhibitors who bring animals to the fair that are deemed uncontrollable and therefore constitute a safety hazard will be required to take their animal home. The Butler County Fair Board Executive Committee in conjunction with the Butler County Ag and 4-H Agent will make the final decision.
12. The right to interpret all rules of the 4-H Divisions of the Butler County Fair will be handled by the Butler County Extension Council Grievance Committee. Refer to the Grievance Policy on the next page.
13. No dogs allowed except those that are service certified. No skateboards or skates (in-line, roller or heely) are allowed.
14. 4-H exhibitors (individual or group) should avoid using copyrighted materials. Copyrighted and/or trademarked materials utilized in banners, displays, posters or other activities other than for educational purposes will be disqualified and will not be displayed or receive ribbons or premium.
15. **Appropriate photo subject matter: Photographic subject matter is expected to follow 4-H standards. For a sense of prohibited subject matter, review the Kansas 4-H Member Code of Conduct; in general, if it is not allowable at a 4-H event, it is not allowable in a 4-H photograph. Please note, guns are NOT an allowable subject matter.**
16. **All animals exhibited at the Butler County Fair are subject to be used in the Livestock Judging Contest.**
17. **Livestock exhibitors should wear a long or short sleeved collared shirt/blouse tucked into good, clean jeans or khaki pants, and sturdy, closed toe shoes (boots are highly recommended). Entrants should not wear t-shirts; tank tops; low-cut shirts; sheer blouses; sleeveless shirts; clothing that exposes cleavage or bare midriff while standing, kneeling, or bending over animal; shorts; or sandals/flip flops. Dairy cattle and dairy goat contestants should wear white shirts and pants meeting the aforementioned guidelines. If wearing jeans/slacks goes against religious beliefs, a long knee-length skirt is acceptable instead of the jeans/slacks. Please consult species superintendent if further clarification is needed.**

GRIEVANCE PROCESS

PURPOSE

The 4-H County Fair grievance process provides a vehicle by which to respond to 4-H members' concerns relating to all 4-H activities during the fair.

WHAT ISSUES MAY BE FILED IN A GRIEVANCE

A grievance committee may be convened for the following situations/reasons:

- Alleged wrongdoing.
- Rule violations from what is published in the fair book.

The fair is the responsibility of the Butler County Extension Board and the Butler County Fair Association; questions need to be addressed to the Fair Board President, Extension Director or 4-H Agent. The 4-H Agent can answer questions regarding the 4-H program such as enrollment, etc. The Extension Office Professionals have been great help putting the fair together. Please do not direct complaints, suggestions, etc. to them but rather to one of the above listed. Any grievances will be handled by the Extension Board Grievance committee consisting of Extension Executive Board representative(s), 4-H Agent, Extension Director, Fair Board President, and Division Superintendent(s).

- Any grievances must be delivered in writing, signed and dated by the person making the protest and discussed with the 4-H Agent or Extension Director.
- Grievances must be received by the 4-H Agent or Extension Director within 24 hours following the occasion for the grievance.
- Such grievances must state plainly the cause of the complaint or appeal and must be submitted to the 4-H Agent or Extension Director. Upon receipt of a qualified grievance, the Extension Agent(s) will promptly notify the grievance committee and any and all persons involved.
- The committee will act within 24 hours of receiving a written complaint. If a resolution cannot be reached, the 4-H Program Development Committee will hear the grievance and make a recommendation to the Butler Co. Extension Board, meeting the 1st Tuesday of each month.
- Following any decision, the course of action will be entered into writing and delivered to the any and all persons involved.

KANSAS 4-H CODE OF CONDUCT

As a participant in the Kansas 4-H program, you have the responsibility of representing Kansas 4-H to the public. You are expected to conduct yourself in a manner that will bring honor to you, your family and 4-H. To do that, you must:

1. Be present, attentive and engaged in the 4-H activities. Practice good sportsmanship, be helpful to others, uphold ethical practices in 4-H projects and events, and never cheat or falsely represent efforts related to 4-H project activities.
2. Know and follow federal, state and local laws that apply to minors (e.g., no use of alcohol, illicit (non-prescribed) drugs, and tobacco in any form) even when I am 18 or 19 years' old and still a program participant.
3. Use language and actions that do not substantially interfere with others' participation in the program. (Swearing, harassment, and bullying are not allowed.) You are personally responsible for any damage you cause as a result of your behavior, including the cost of any physical injury or property damage you cause in the course of your participation in any program or event.
4. Know and follow safety policies and procedures of Kansas State University, Kansas State Research and Extension (KSRE), and guidelines of the 4-H Youth Development Program, as applicable to this program. (Such as: not leaving the program area without permission from the program supervisor; be in assigned lodging and program areas during activities; abide by curfew hours; and, any other additional safety policies established by a specific event or program.)
5. Obey all rules and directives that apply to the 4-H activity where I am involved.
6. Use mobile electronic devices during a scheduled 4-H activity only in a manner that is consistent with the approved activity and not disruptive.
7. Apply these conduct standards to online 4-H activity, including social media and internet presence.

Special thanks to the Butler County Extension Council, the Program Development Committee and the Butler County Extension Agents for their development of the 4-H rules and guidelines for the 2020 Butler County Fair Book.

Butler County Extension Agents

Butler County Extension Director/Ag Agent – Charlene Miller

Butler County 4-H Agent- McKenzie Smithson

Butler County FCS Agent – Barbara Roths

Butler County Horticulture Agent – Larry Crouse

Butler County Extension Council

Chairperson – Becky Walters

Vice Chairperson – Joe Liebbrandt

Secretary – Oleta McKinney

Treasurer – April Harter

Members – Julie Cleveland, Kris Goossen, John Ramsey, Les Stalnaker, Carla Varner

4-H and Youth Program Development Committee

Jessica Cabrales, Carla Varner, Jeremiah Zweifel, Penny McNett, Kris Goossen, Chris Steward

SPECIAL THANKS TO EXTENSION OFFICE PROFESSIONALS

- Andrea Perry
- Darla Deaton

Medallion Hunt

Find the Medallion!

The Butler County 4-H Ambassadors hide a medallion somewhere on the Fair Grounds. Please Do NOT move projects or tables in an effort to find the medallion. The lucky finder of the Medallion will receive a \$100 cash award sponsored by Andrea Perry, Butler County Extension, Office Professional!

SECTION II - LIVESTOCK ELIGIBILITY REQUIREMENTS

Market Animal Certification - will be required to be completed by June 1st for each member who shows market livestock at the Butler County Fair must turn in a Certification of Market Animals with the pre-entries. Only animals pre-entered in the Fair will be allowed to be on the fairgrounds.

Animal Care and Housing Form - Each 4-H member must have a completed Butler County Animal Care and Housing form on file in the Extension Office for each species that they plan to show. This form is required for ALL animals, excluding horses. The deadline for submission on registered breeding animals is June 1st.

Youth Quality Care for Animals (YQCA) will be required to be completed by June 1st for any member exhibiting livestock (all beef, dairy goats, meat goats, sheep, swine, rabbits, pigeons and poultry) at the Butler County Fair. YQCA is not required for Horses. YQCA Information can be found here: <https://www.butler.k-state.edu/4-h/YQCA.html>

Household Nominations - Households that wish to be eligible for family nomination must turn in the Butler County Household Nomination Intent Form by the tagging date for all market and commercial breeding animals. This applies to Beef, Sheep, Meat Goats, and Swine. This form is due by June 1st.

Market Beef - All market steers and market heifers must have been weighed and tagged at the official tagging at the fairgrounds.

Commercial Breeding Beef (including Cow/Calf) - All commercial heifers and cows must be tagged by June 15 with an official 4-H tag. Tagging can be done by an approved leader or at the fairgrounds at the official tagging. Calves that are part of the Cow/Calf pair do not require a tag.

Registered Breeding Beef Animals (including Cow/Calf) - Registration or transfer papers must be in club member's name, dated prior to June 15. Heifers and cows may be co-owned and co-registered by two or more 4-H members of the same family. Registration papers will be required at Fair check-in.

Bucket Calves - Bucket calves must have been tagged by May 1 with an official 4-H tag. Tagging can be done by an approved leader or at the fairgrounds at the official tagging.

Breeding Dairy Goats - Registration papers or stamped duplicate registration applications will be required for all registered dairy goats. Papers must be in the name of the 4-Her by July 1 or show ownership by July 1 for grades. Animals without registration papers or legible tattoos, will show with the grades, on a bill of sale. The grade does should be identified with an official USDA Scrapie Premise I.D. tag. Goats, under 8 weeks of age, accompanying their dams, are exempt from tagging requirements.

Market Dairy Goats - Market Dairy Goats must have been tagged with an official 4-H tag at the fairgrounds at the official tagging (same dates as market meat goats). **If the breed does not have ears, a legible tail tattoo will be required at tagging time and a tag will be issued at tagging.**

Market Meat Goats - Market Meat Goats must have been tagged with an official 4-H tag at the fairgrounds at the official tagging.

Registered Breeding Meat Goats- Registration or transfer papers must be in the name of the exhibitor by June 15. Breeding meat goats may be co-owned and co-registered by two or more 4-Hers of the same family. All breeding meat goats must have an individual identification in an ear. A flock tag, registration tag or tattoo will be accepted. **Registration papers will be required at Fair check-in.**

Commercial Breeding Meat Goat Does - Commercial Breeding Meat Goat Does must be tagged by June 15 with an official 4-H tag. Tagging can be done by an approved leader or at the fairgrounds at the official tagging..

Market Lambs – Market Lambs must have been tagged with an official 4-H tag at the official tagging at the fairgrounds.

Registered Breeding Ewes - Registration or transfer papers must be in the name of the exhibitor by June 15. Breeding sheep may be co-owned and co-registered by two or more 4-Hers of the same family. All breeding sheep must have an individual identification in an ear. A flock tag, registration tag or tattoo will be accepted.

Commercial Breeding Ewes - Commercial breeding ewes must be tagged by June 15 with an official 4-H tag. Tagging can be done by an approved leader or at the fairgrounds at the official tagging.

Market Hogs - The market hog class will be open to both gilts and barrows, and they must have been tagged by May 1 with an official 4-H tag. Tagging must be done by an approved leader.

Ear notches must be included on the form.

Pedigreed Gilts - Registration or transfer must be in the name of the exhibitor and be tagged with an official 4-H tag by June 15. Pedigreed gilts may be co-owned and co-registered by two or more 4-Hers of the same family. All gilts must have an individual ear notch which **matches the tagging and registration papers.**

Commercial Breeding Gilts - Commercial breeding gilts must be tagged with an official 4-H tag by June 15. Ear notches must be included on the **tagging** form. Tagging must be done by an approved leader.

LIVESTOCK HEALTH REQUIREMENTS

General Health Requirements All animals are subject to examination by the fair veterinarians and shall be free of clinical signs of infectious or contagious disease. Health certificates are not required.

All market barrows must be physically castrated, and incisions healed. All other market animals (except market heifers) and bucket calves (heifers) must be castrated and be healed, and all animals must be free of infectious lesions and congenital defects. All animals must be of suitable health and quality to be exhibited to the public.

THE BUTLER COUNTY FAIR EXECUTIVE BOARD HAS THE RIGHT TO DISMISS ANY ANIMAL FROM THE GROUNDS THAT DOES NOT MEET THESE REQUIREMENTS. ALL LIVESTOCK WILL BE INSPECTED BY A FAIR VETERINARIAN BEFORE THEY ARE UNLOADED. (BEEF INSPECTED IMMEDIATELY AFTER UNLOADING).

Any costs of special tests or posting of dead animals will be the responsibility of the owners. Any animal which dies on the fairgrounds will have a necropsy performed by the Fair Veterinarian.

Superintendents reserve the right to call for an inspection of an animal or animals by the Fair Veterinarian. Any medication given internally must be given under the Fair Veterinarian's supervision. Any drenching must be done by a Fair Veterinarian.

Cattle

The Kansas Animal Health Department requires no test on cattle of Kansas origin. Cattle will be inspected by fair veterinarians who will determine that the animals are free of clinical signs of infectious disease. Some examples of infectious disease could be lesions of ringworm, warts, infection of mange, etc. Any animal determined by Fair Veterinarians to have signs of an infections or contagious disease will not be permitted to exhibit and will be sent home.

Horses

Horses shall meet the general requirements.

Swine

1. Swine originating in Kansas must meet the general requirements. Kansas has obtained Stage V status in the National Pseudorabies Program and the state is classified free of swine brucellosis. A negative pseudorabies or brucellosis test is not required for Kansas origin swine.
2. Swine originating from other states must meet one of the following requirements:

- a. Originate from a qualified pseudorabies-free/validated brucellosis-free herd. The current qualified/validated number must appear on the CVI. (Hogs from monitored pseudorabies herds do not qualify under this requirement.)
 - b. Originate from a state of Stage IV or V status in the National Pseudorabies Program and originate from a Swine Brucellosis free state.
 - c. Any swine not originating from Stage IV or Stage V National Pseudorabies Program states, and any swine not originating from swine brucellosis free states, must show evidence on the CVI that swine have been tested negative to official tests for pseudorabies and brucellosis within 30 days before entry into Kansas, and that the herd of origin has had no positive cases of pseudorabies within the previous 12 months.
3. **NOTE:** SWINE VACCINATED FOR PSEUDORABIES SHALL NOT BE ALLOWED INTO KANSAS FOR EXHIBITION OR ANY OTHER PURPOSE.
 4. Swine will be inspected by fair veterinarians who will determine that the animals are free of clinical signs of infectious disease. Any animal determined by Fair Veterinarians to have signs of an infections or contagious disease will not be permitted to exhibit and will be sent home.

Poultry

The pullorum-typhoid blood test will be required within 90 days of the Butler County Fair and the Kansas State Fair on all chickens and turkeys. Waterfowl do not require testing. Sealed leg bands and proper paperwork will be required.

PLEASE NOTE: The pullorum-typhoid blood test will NOT be required for the 2020 Butler County Fair due to a shortage of antigen for the test per the Kansas Department of Agriculture. All poultry will be banded with a numbered band at poultry check-in for identification.

Sheep

1. All market lambs must be slick shorn (no more than ¼ inch of wool) above the hocks prior to arrival at the fair.
2. All sheep will be inspected at unloading by fair veterinarians who will determine that the animals are free of clinical signs of infectious disease. Some examples of infectious disease could be lesions of ringworm, "sore mouth", club lamb fungus, etc. Sheep will not be allowed to unload until inspected.
3. Sheep with infectious skin lesions will be denied entrance to the barns. Any animal determined by Fair Veterinarians to have signs of an infections or contagious disease will not be permitted to exhibit and will be sent home.
4. It is required that all sheep be identified with an official USDA Scrapie Premise I.D. tag. This requirement includes wethers. Lambs, under 8 weeks of age, accompanying their dams, are exempt from tagging requirements.

Goats- Dairy and Meat

1. Goats shall meet the general requirements. All goats, including wethers, must be identified with a registered tattoo or an official USDA scrapie premises ID tag. Kids,

under 8 weeks of age, accompanying their dams, are exempt from tagging requirements.

2. All goats will be inspected at unloading by fair veterinarians who will determine that the animals are free of clinical signs of infectious disease. Some examples of infectious disease could be lesions of ringworm, warts, infection of mange, etc. Goats will not be allowed to unload until inspected. Any animal determined by Fair Veterinarians to have signs of an infections or contagious disease will not be permitted to exhibit and will be sent home.

LIVESTOCK RULES AND REGULATIONS

Livestock Health Requirements are subject to changes from state recommendations. All livestock entering Kansas shall follow all KDAH import requirements.

1. See General Rules and Regulations, Livestock Health Requirements and Livestock Sale.
2. All exhibitors at the Butler County Fair showing livestock animals (all beef, bucket calves, dairy goats, meat goats, sheep, swine, poultry and rabbits) at the fair must have completed the Youth Quality Care for Animals (YQCA) by June 1. Verification of this must be on file in the Butler County Extension Office **on or before June 1st**.
3. Each exhibitor shall be responsible for the feeding, watering, and care for animals the duration of the fair. PLEASE NOTE: Exhibitors will provide shavings, carpet or sawdust for all livestock.
4. All livestock exhibitors must be on hand to exhibit their entries. In case exhibitor has two entries in the same class, he or she may have another Butler County 4-H member assist, with the approval of the superintendent of that department. It is the responsibility of each exhibitor to see that their entries are judged.
5. Each exhibitor grooming and preparing their animal for show can only use the assistance of an immediate family member (mother, father, grandparent, legal guardian, brother or sister) or another 4-H member who is an exhibitor at the current Butler County Fair. Violation of this rule will disqualify an exhibitor. Decision as to disqualifications will be handled by the grievance committee.
6. All animals that are not eligible to be shown or are disqualified must be removed from the fairgrounds immediately. This determination and decision will be made by the Butler County Extension Council Grievance Committee and/or veterinarian on duty. All animals that are determined uncontrollable by the Fair Executive Board in conjunction with the Ag Agent & 4-H Agent must be removed from the fairgrounds immediately.
7. If an exhibitor removes their animal from the show ring prior to completion of judging of the specie without the consent of the superintendent, the exhibitor may be disqualified, and premiums forfeited.
8. Animals which do not make weight will show in special classes and will not be eligible to show for Grand or Reserve Grand Champion.
9. Animals shown in the market classes are not eligible to show in the breeding classes and vice versa.
10. The Butler County Fair Executive Board has the right to do comprehensive drug tests on any animal shown at the Butler County Fair.
11. No drenching equipment will be allowed on the fairgrounds.
12. **Fans must be hung or secured properly. No metal to metal contact is allowed in the sheep, goat, and swine barns. No wires may be used to hang fans.**

13. All 4-H animals are to remain on the Fairgrounds or other designated area. They are not allowed in the camping area, in the parking lot or over on city property.
14. All livestock must be in line to check-in before end of check-in time. Anyone that is not in line by the posted check-in time will not be allowed to check-in.
15. Any 4-H Exhibit (including animals) sold at public auction or by private contract is not eligible to be exhibited at the Kansas State Fair or Kansas Junior Livestock Show. Public Auction includes Premium Sale, Ribbon Auction, or similar event per Kansas 4-H Policy Sec. J 2.2

SECTION IV – HERDSMANSHIP

HERDSMANSHIP AWARDS – Beef, Bucket Calves, Meat Goats, Dairy Goats, Sheep and Swine Barns. The purpose of this award is to display the barns for those persons coming to the fair to view the exhibits. Pens and alleys will be judged and posted daily. Willingness to cooperate with management in showing, parking, tie outs, etc., courtesy and willingness to follow rules, general courtesy to the public and neat appearance of the exhibits will make a better and more enjoyable County Fair for everyone involved. The following guidelines will be used in scoring the Herdsmanship Awards:

1. PEN/STALLS - 35 TOTAL POINTS POSSIBLE
 - a. Pens/Stalls kept clean, neat, and dry. The pens/stalls should be kept clean and the manure disposed of in a designated area. It is recommended that feed and water pans be removed from pens except at feeding time. This will help keep the pens cleaner and help keep water from being spilled, thus keeping the animals cleaner.
 - b. Equipment kept in show boxes or designated areas. The equipment area should be kept neat and clean.
 - c. Feed must be kept in feed areas.
2. ANIMALS DISPLAYS - 35 TOTAL POINTS POSSIBLE
 - a. Animals kept properly fitted and clean, as they are on display.
 - b. Animals tied or stalled for best effect.
 - c. Animal adequately bedded.
 - d. Animals fed and watered regularly.
3. AISLES AND DISPLAYS - 30 TOTAL POINTS POSSIBLE
 - a. Aisles kept free and clean for spectators use. The aisles should be raked to keep them clean and sprinkled, not soaked, to keep the dust settled.
 - b. The exhibit cards should be neatly displayed and filled out with the member's name and club. After the animals are weighed, the weight and ear tag number should be added to the exhibit card. Other decorative means such as display signs, curtains, etc. can be used. No advertising is permitted. Remember - excess signs and displays may block the air flow.

SECTION V – 4-H DIVISIONS ANIMALS

DIVISION A – BEEF

Check in: Saturday, July 18th | 7:00 AM – 9:00 AM

Weigh in: Saturday, July 18th | 11:00 AM-12:00 PM

Judging: Tuesday, July 21st | 8:00 AM



SUPERINTENDENTS: Angela Cerney & Peggy Henley
ASSISTANT SUPERINTENDENTS: Ryan Parker & Tony Borg

Deadline for entries is **June 26th, 2020.**

ALL BEEF MUST BE INSPECTED BY FAIR VETERINARIAN IMMEDIATELY AFTER UNLOADING.

1. Read GENERAL RULES, LIVESTOCK RULES, HEALTH REQUIREMENTS, ELIGIBILITY REQUIREMENTS, AND LIVESTOCK SALE.
2. Each exhibitor will be limited to a total of two breeding animals and two market animals.
3. Registration or transfer papers must be in club member's name, dated prior to June 15. Heifers and cows may be co-owned and co-registered by two or more 4-H members of the same family.
4. All commercial heifers and cows must be tagged by June 15 with an official 4-H tag. Tagging can be done by an approved leader or at the fairgrounds at the official tagging set by the Butler County Fair Board. All market animals will be mouthed.
5. Animals must have both baby teeth in place.
6. Market animal entries for the Livestock Sale must be by **TBA BY THE FAIRBORD**
7. No animals will be allowed to be tied outside the piped-in area around the beef barn.
8. No blocking chutes are to be placed in the barns.
9. Generators may be used at the tie-out rails south of the beef barn only.
10. Superintendents reserve the right to call for an inspection of an animal or animals by the Fair Veterinarian.
11. Market Heifer must be open, not bred.
12. Breeding heifers cannot have been shown as a market heifer at a previous fair.
13. The market beef and breeding beef (including the cow/calf pairs) show will be a "Blow and Show" (no-fit show). "Blow and Show" is defined as using no adhesive, glue, paint, or powder products.
14. The calves on the cow/calf pairs must have been born within 270 days of the show date at the fair and must still be at the cow's side and nursing. The calf must be halter led.
15. All exhibitors showing Beef at the fair must have completed the Youth Quality Care for Animals (YQCA) by June 1.
16. All Beef Exhibitors are required to attend the **Livestock Exhibitors Meeting on Saturday, July 18th at 3:30 PM** in the Livestock Arena. Information regarding rules, fitting and showing, etc. will be reviewed by Extension Agents, Division Superintendents and Fair Board.

MARKET BEEF

Feeder Beef Class—Animals not making sale weight will be placed in a special feeder class by the Superintendent. These animals will show first in the market classes. These animals are not eligible to show for Grand or Reserve Grand Champion. **Market Beef will be shown by weight only; not by breeds.**

- Class 1 – Market Steers
- Class 2 – Market Heifers

Market Beef will be divided into weight classes. Champions and Reserve Champions in the weight classes will show for Grand and Reserve Grand Champion of the Market Beef Division.

BREEDING BEEF

- Senior Heifer Calves, calved between September 1-December 31, 2019
- Summer Yearling Heifers, calved between May 1-August 31, 2019
- Junior Yearling Heifers, calved between January 1-April 30, 2019
- Senior Yearling Heifers, calved between September 1-December 31, 2018
- Cow/Calf Pairs, calf must be born within 270 days of fair

REGISTERED

- Class 5 - Senior Heifer Calf
- Class 6 - Summer Yearling
- Class 7 - Junior Yearling
- Class 8 - Senior Yearling



COMMERCIAL

- Class 10 - Senior Heifer Calf
- Class 11 - Summer Yearling
- Class 12 - Junior Yearling
- Class 13 - Senior Yearling

Champion and Reserve Champion winners in the above classes will show for Grand and Reserve Grand Heifer.

COW-CALF PAIRS

- Class 15 – Registered Cow/Calf Pair
- Class 16 – Commercial Cow/Calf Pair

Champion and Reserve Champion in Classes 15 and 16 will show for Grand and Reserve Grand Cow/Calf Pair.

FITTING AND SHOWMANSHIP CLASS

Sign-up will be at check-in and day of the show. Open only to club members exhibiting in this division and club member must own and exhibit animal fitted and shown. Three fitting and showmanship classes will be provided in this division - for club members 7-9, 10-13, and 14-18. Age is determined by January 1, 2020.

DIVISION B – BEEF CARCASS CONTEST

Superintendent: Amanda Hebb & Kathy Wooderson

Assistant Superintendent: Mike Roths

Sign-up begins at Beef Weigh-in and ends June 1. Application is available at: butler.k-state.edu

1. Open to all Market Beef exhibiting at the 2020 Butler County Fair.
2. Each 4-Her is limited to 2 entries (market animals).
3. Sign-up for Carcass Contest begins at Beef Weigh-In on **March 1, 2020** and ends on June 1st.
4. Exhibitor's name and animal ear tag will be documented and verified at sign-up and at time of loading after the fair.
5. Exhibitor is responsible for sale of meat along with the processing fee.
6. All participated beef will be transported to the locker after the fair by the fair board.
7. All carcasses will be processed and judged at Walnut Valley Packing in El Dorado.
8. Exhibitors are encouraged to view judging for an education experience on how the carcass class is evaluated (date and time to be announced)

The contest is sponsored by Fleming Feed and Grain and award the following prizes:

1st Place - \$500

2nd Place - \$400

3rd Place - \$300

4th Place - \$200

5th Place - \$100

DIVISION C – BUCKET CALVES

Check in: Saturday, July 18th | 7:00 AM – 9:00 AM

Weigh in: Saturday, July 18th | Immediately following Beef Weigh-in

Judging: Monday, July 20th | 4:00 PM

SUPERINTENDENTS: Gary and Carrie Claassen

Deadline for entries is **June 26th, 2020.**

ALL BUCKET CALVES MUST BE INSPECTED BY FAIR VETERINARIAN BEFORE UNLOADING.

1. Read GENERAL RULES AND HEALTH REQUIREMENTS.
2. Calves exhibited must have been born after January 1 and before May 1 of the current year. Bucket calves must be tagged by May 1 with an official 4-H tag. Tagging can be done by an approved leader or at the fairgrounds at the official tagging.
3. Calves must have been raised (fed) on a bucket or bottle. Only steers and heifers may be shown.
4. All male calves must be castrated and be healed before brought to the Fair. If banded, the scrotum must have fallen off.
5. All animals must be free of clinical signs of infectious disease such as ringworm, warts, infection of mange, etc. Animals must also be free of contagious diseases and not exhibit any visible signs of illness.
6. Exhibitors must be 12 or younger on January 1 of the current 4-H year and may not show any other beef at the fair.
7. Judging will be based on an interview by the judge to determine the 4-Hers knowledge of raising a calf.
8. Exhibitors may only exhibit one bucket calf.
9. The bucket calf show will be a “Blow and Show” (no-fit) show. “Blow and Show” is defined as using no adhesive, glue, paint, or powder products.
10. All exhibitors showing Bucket Calves at the fair must have completed the Youth Quality Care for Animals (YQCA) by June 1.
11. All Bucket Calf Exhibitors are required to attend the **Livestock Exhibitors Meeting Saturday, July 18th, 3:30 PM** in the Livestock Arena. Information regarding rules, fitting and showing, etc. will be reviewed by the Extension Agents, Division Superintendents, and Fair Board.

Class 31 - 10-12-year-old 4-Hers (as of January 1, 2020)

Class 32 - 7-9-year-old 4-Hers (as of January 1, 2020)

FITTING AND SHOWMANSHIP CLASS

Sign-up will be at check-in and day of the show. Open only to club members exhibiting in this division and club member must own and exhibit animal fitted and shown. Two fitting and showmanship classes will be provided in the bucket calf division - for club members 7-9 years old and 10-12 years old. Age is determined by January 1, 2020.

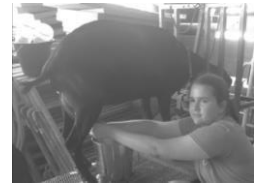
Bucket Calf Dress Up Contest- Watch for more information to come!

DIVISION D-1 – DAIRY GOATS

Check in: Saturday, July 18th | 7:00 AM – 9:00 AM

Judging: Saturday, July 18th | 5:00 PM

Celebrity Goat Milking: Monday, July 20th | 9:00 AM



SUPERINTENDENT: Carla Varner

ASSISTANT SUPERINTENDENTS: Misty Rigg & Tara Varner

Deadline for entries is **June 26th, 2020.**

ALL DAIRY GOATS MUST BE INSPECTED BY FAIR VETERINARIAN BEFORE UNLOADING.

1. Read GENERAL RULES, LIVESTOCK RULES AND HEALTH REQUIREMENTS.
2. Animals must be dehorned and disbudded.
3. Animals will be divided into registered and grade classes. Must be a Dairy Goat breed.
4. Showmanship classes will be judged first.
5. Registration papers or stamped duplicate registration applications will be required for all registered animals. Animal papers must be in the name of the 4-Hers by July 1 or show ownership by July 1 for grades. Animals without registration papers or legible tattoos, will show with the grades, on a bill of sale. The grade does should be identified with an official USDA Scrapie Premise I.D. tag. Goats, under 8 weeks of age, accompanying their dams, are exempt from tagging requirements.
6. Classes will be provided for breeds that are recognized by the American Dairy Goat Association. These breeds are Alpine, LaMancha, Nigerian Dwarf, Nubian, Oberhasli, Saanen, Sable, Toggenburg and Recorded Grade (Experimentals). The Recorded Grades have brown registration paper issued by ADGA.
7. Exhibitors are requested to be neatly and appropriately attired (preferably in white) when showing their animals in the ring.
8. Entries will be placed in classes by age with the day of judging being the base date. Each exhibitor is limited to a maximum of two dairy goats per class, and a total of 6 animals. Only does are allowed to show in breeding classes.
9. Does in production may be released by Superintendent to go home after showing.
10. Market Wethers – show in Class 60 of Division D-2 Market Meat Goats, see pages 26 & 27. Dairy Market Wethers will be weighed after Meat Goat weighing on Saturday between 10:00 and 11:00 AM. Dairy Goat Wethers must weigh a minimum of 20 pounds to sell in the Livestock Auction.
11. All exhibitors showing Dairy Goats at the fair must have completed the Youth Quality Care for Animals (YQCA) by June 1.
12. **Celebrity Milking Dairy Goat Contest will be held Monday, July 20 at 9:00 AM.**
13. All Dairy Goat Exhibitors are required to attend the **Livestock Exhibitors Meeting on Saturday, July 18 at 3:30 PM** in the Livestock Arena. Information regarding rules, fitting and showing, etc. will be reviewed by the Extension Agents, Division Superintendents, and Fair Board.

REGISTERED - The breeds will be shown as listed in the classes below.

35 - Junior Doe, birth date from April 1, 2020 to show date

36 - Junior Doe, birth date from March 1 to March 31, 2020

- 37 – Junior Doe, birth date from January 1 to February 28, 2020
- 38 - Junior Doe, birth date from September 14, 2019 to December 31, 2019 (dry yearling)
- 39 - Senior Doe, under 2 years in milk
- 40 - Senior Doe, 2 years to under 3 years in milk
- 41 – Senior Doe, 3 years to under 4 years in milk
- 47 – Senior Doe, 4 years to under 5 years in milk
- 48 – Senior Doe, 5 years and over in milk

GRADES - All breeds shown together. Classes 49 through 57 are County Fair Only.

- 49 - Junior Doe, birth date from April 1, 2020 to show date
- 50 - Junior Doe, birth date from March 1 to March 31, 2020
- 51 – Junior Doe, birth date from January 1 to February 28, 2020
- 52 - Junior Doe, birth date from September 14, 2019 to December 31, 2019 (dry yearling)
- 53 - Senior Doe, under 2 years in milk
- 54 - Senior Doe, 2 years to under 3 years in milk
- 55 – Senior Doe, 3 years to under 4 years in milk
- 56 – Senior Doe, 4 years to under 5 years in milk
- 57 – Senior Doe, 5 years and over in milk

FITTING AND SHOWMANSHIP

Sign-up will be at check-in and day of show. Open only to club members in the dairy goat project. Member must own, and exhibit animal fitted and shown. Three fitting and showmanship classes will be provided in this division - for club members 7-9, 10-13, and 14-18. Age is determined by January 1, 2020.

DIVISION D-2 – MEAT GOATS

Check in: Saturday, July 18th | 7:00 AM – 9:00 AM

Weigh in: Saturday, July 18th | 10:00 AM – 11:00 AM

Judging: Sunday, July 19th | 6:00 PM



SUPERINTENDENTS: Penny McNett

ASSISTANT SUPERINTENDENTS: Will Johnson

Deadline for entries is **June 26th, 2020.**

ALL MEAT GOATS MUST BE INSPECTED BY FAIR VETERINARIAN BEFORE UNLOADING. MEAT GOATS WILL BE CHECKED-IN SATURDAY, FROM 7:00 TO 9:00 AM AND WEIGHED ON SATURDAY 10:00 AM to 11:00 AM.

Market Meat Goats must weigh a minimum of 50 pounds to sell in the Livestock Sale. There is no maximum limit.

1. Read GENERAL RULES, LIVESTOCK RULES, HEALTH REQUIREMENTS AND LIVESTOCK SALE RULES.
2. Must be meat-type goat.
3. Market Goats (Does and wethers) must have their milk teeth to be eligible to compete in the Market Meat Goat class.
4. Each exhibitor will be limited to a total of two breeding animals and two market animals.
5. Entries in the market meat goat class must be either wethers or does (no bucks allowed) and will be shown shorn (no more than 3/8-inch hair).
6. Market meat goats may be shown with or without horns.
7. Meat goat entries for the Livestock Sale must be made **by TBA by FAIRBOARD.**
8. Market animals which do not make minimum sale weight will show in a special class and will not be eligible to show for the Grand and Reserve Grand Champion Market Meat Goat. They will not be able to sell in the Livestock Sale.
9. Superintendents reserve the right to call for an inspection of an animal or animals by the Fair Veterinarian.
10. Registered breeding does will be shown by age and breeding registration papers will be required. Breeding does will be judged by breed standards.
11. Commercial does will be shown by weight. Commercial breeding does must be tagged by June 15 with an official 4-H tag. Tagging can be done by an approved leader or at the fairgrounds.
12. All Meat Goat Exhibitors are required to attend the **Livestock Exhibitors Meeting on Saturday, July 18th at 3:30 PM** in the Livestock Arena. Information regarding rules, fitting and showing, etc. will be reviewed by the Extension Agents, Division Superintendents, and Fair Board.

FITTING AND SHOWMANSHIP

Sign-up will be at check-in and day of show. Open only to club members exhibiting in the meat goat project. Member must own and exhibit animal fitted and shown. Three fitting

and showmanship classes will be provided in this division - for club members 7-9, 10-13, and 14-18. Age is determined by January 1, 2020.

Breeding Does:

- Class 54 – Registered Does (born 9/1/2019 and later) See #10 above
- Class 55 – Registered Yearling Does (born 9/1/2018 to 8/31/2019) See #10 above
- Class 56 – Registered Older Does (born 9/1/2017 to 8/31/2018) See #10 above
- Class 57 – AOB Does – See #10 above
- Class 58 – Commercial Does – will show by weight

Champion and Reserve Champions in each breed will show for Supreme and Reserve Supreme Breeding Meat Goat

Market Meat Goats:

- Class 59 – Market Meat Goat
- Class 60 – Market Dairy Goat

Market meat goats and market dairy goats will be weighed at the fair without blankets. The classes may be divided by weight to make two or more uniform classes. Champion and Reserve Champion of each weight class (in both classes 59 and 60) will show for Grand and Reserve Grand Market Meat Goat.

FITTING AND SHOWMANSHIP CLASS

Sign-up will be at check-in and day of show. Open to club members exhibiting this division and club member must own and exhibit animal fitted and shown. Three fitting and showmanship classes will be provided in this division - for club members 7-9, 10-13, and 14-18. Age is determined by January 1, 2020.

DIVISION E - HORSES

Butler County 4-H Horse Show – July 11, 2020 at Three Wooden Crosses Arena AT 5 PM

SUPERINTENDENTS: Toni Bowlin & Sara Schmidt

ASSISTANT SUPERINTENDENTS: TBA



Deadline for entries is June 26th, 2020.

1. Read GENERAL RULES.
2. To be eligible to exhibit you must have turned in a horse ID form on or before May 1st to the Butler County Extension Office.
3. A 4-H HORSE IDENTIFICATION must be presented for each horse exhibited and/or riders in this division. This identification will be checked before the Horse Show.
4. All animals must be broke to lead.
5. Stallions may not be shown in any class.
6. No member may make more than two entries in any one halter class and not more than one entry in any performance class (including showmanship). Each exhibitor will be limited to four animals in this division.
7. The superintendent has the privilege to divide and consolidate classes depending on number of entries in any one class.
8. Those entering in the walk/trot classes may enter ONLY walk/trot classes and may NOT enter in any other performance or speed event class.
9. The 4-H Horse Show shall be governed by the rules set forth in the *Handbook for Kansas 4-H Horse Shows and Events*, Spring 2020.
10. The use of protective headgear in place of a hat, is the optional choice of the exhibitors in any and all Western Classes, including judged, timed and futurity classes.
11. No weanlings can be shown.
12. Only exhibitors are allowed to ride/train his/her horse at the show.
13. Exhibitor's age is their 4-H age.
14. High point and Reserve High Point awards will be given in each age division. The walk trot division will also have a high point and reserve. Qualifications based on one horse and one rider.

Halter classes:

Stock type: Includes but not limited to Quarter Horse, Buckskin, Palomino, Paint, Appaloosa, Mustang (mares and geldings except as noted)

73 – Stock type Mares (any age)

74 – Stock type Geldings (any age)

Non-Stock type: Includes but not limited to Arabian, Morgan, Thoroughbred, American Saddlebred (mares and geldings) and Ponies [all breeds, 56" and under (mares and geldings)]

75 – Halter Non-Stock Type Mares (any age)

76 – Halter Non-Stock Type Geldings (any age)

Showmanship:

- 77 Showmanship, 14-18
- 78 Showmanship, 10-13
- 79 Showmanship, 7-9

Western Horsemanship:

- 80 - Western Horsemanship, 14-18
- 81 - Western Horsemanship, 10-13
- 82 - Western Horsemanship, 7-9
- 83 - Western Horsemanship, walk/trot, member of all ages

Western Pleasure: Exhibitor may NOT show in more than one Western Pleasure class with the same horse.

- 84 - Western Pleasure, 14-18
- 85 - Western Pleasure, 10-13
- 86 - Western Pleasure, 7-9
- 87 - Non-Stock type and Pony Western Pleasure, member all ages
- 88 - Walk-trot Western Pleasure, member all ages

Working Ranch Horse

- 91- Working Ranch Horse, member all ages

English Pleasure

- 92 - English Pleasure, member all ages
- 93 - Walk/trot English Pleasure, member all ages

English Equitation

- 94 - English Equitation, member all ages
- 95 - Walk/Trot English Equitation, member all ages

Trail:

- 96 - Trail, 14-18
- 97 - Trail, 10-13
- 98 - Trail, 7-9
- 99 - Walk/Trot Trail, member all ages

Reining:

- 100 - Reining, 14-18
- 101 - Reining, 10-13
- 102 - Reining, 7-9

Timed Events:

- 103 - Poles, 14-18
- 104 - Poles, 10-13
- 105 - Poles 7-9
- 106 - Barrels, 14-18

107 - Barrels, 10-13

108 - Barrels, 7-9

109 - Flags, 14-18

110 - Flags, 10-13

111 - Flags, 7-9

DIVISION F - PIGEONS

Check in: Saturday, July 18th | 10:00 AM – 11:00 AM

Judging: Sunday, July 19th | 1:00 PM

SUPERINTENDENT: Jeremy Nelson



Deadline for entries is June 26th, 2020.

1. Read GENERAL RULES.
2. All entries must be single birds.
3. No pullorum test is required on pigeons.
4. Members may not enter more than two birds per class regardless of breed. Each exhibitor is limited to eight birds. 4-Her's must be present when exhibits are judged.
5. All pigeons must be shown with numbered band. Young birds must be shown with seamless bands or else be judged in the old class. Young birds are those born in the calendar year of the show.
6. Judging will be by comparison only using the latest standards of the National Pigeon Association.
7. Class will be offered for the following breed types: utility, fancy and flying/performing.
8. There are no classes for Pigeons at the Kansas State Fair.
9. All exhibitors showing Pigeons at the fair must have completed the Youth Quality Care for Animals (YQCA) by June 1.
10. All Pigeon Exhibitors are required to attend the **Livestock Exhibitors Meeting on Saturday, July 18 at 3:30 PM** in the Livestock Arena. Information regarding rules, fitting and showing, etc. will be reviewed by the Extension Agents, Division Superintendents, and Fair Board.

Class 125 – Old Cock

Class 126 – Old Hen

Class 127 – Young Cock

Class 128 – Young Hen

DIVISION G – POULTRY

Check in: Saturday, July 18th | 10:00 AM – 11:00 AM

Judging: Sunday, July 19th | 1:00 PM

SUPERINTENDENT: Jeremy Nelson



Deadline for entries is June 26th, 2020.

Read GENERAL RULES.

1. The pullorum-typhoid blood test will be required within 90 days of the Butler County Fair and the Kansas State Fair for all chickens and turkeys. Waterfowl are not required to be tested. The test may be done elsewhere but the proper paperwork and a sealed leg band must accompany the tested poultry.
2. Members may not make more than one entry per class in pens of three, two entries per class in single pen breed classes, and not more than one turkey. A total of thirteen entries per member is allowed.
3. Judging of all classes, except Market Poultry, will be done on basis of exhibition and production qualities. Members exhibiting well-developed birds of production quality will be credited for it even if they vary slightly from standard perfection. Disqualifications will bar competition.
4. Market Poultry will be judged on meat qualities only. It is required that Poultry be banded to insure proper identification.
5. Each member should bring watering cups and feed - no flimsy cups. Coops will be supplied at the show, and club member will place exhibit in pen assigned.
6. All Poultry will be judged on a pen basis.
7. Exhibitor must be present when Poultry is judged.
8. In Poultry, a young bird is a bird born in the current year.
9. Class changes may be made between young and old fowl or production and dual purpose as long as the pre-entry was made. NO ENTRIES will be added at the fair.
10. All exhibitors showing Poultry at the fair must have completed the Youth Quality Care for Animals (YQCA) by June 1.
11. All Poultry Exhibitors are required to attend the **Livestock Exhibitors Meeting on Saturday, July 18 at 3:30 PM** in the Livestock Arena. Information regarding rules, fitting and showing, etc. will be reviewed by the Extension Agents, Division Superintendents, and Fair Board.

Class 130 - Standard Breeds, Large Fowl—One young bird of either sex

Class 131 - Standard Breeds, Large Fowl—One old bird of either sex

Class 132 - Standard Breeds, Bantams—One young bird of either sex

Class 133 - Standard Breeds, Bantams—One old bird of either sex

Class 134 - Production Pullets—Pen, 3 standard-bred, crossbred, or strain cross pullets, or sexlink pullets to be judged on egg production qualities only

Class 135 - Production Hens—Pen, 3 standard-bred, crossbred, or strain cross, or sexlink hens to be judged on egg production qualities only

Class 136 - Dual purpose pullets—Pen of 3 (Ex: Rhode Island Red, New Hampshire, Plymouth Rock, etc.)

- Class 137 - Dual purpose hens–Pen of 3 (Ex: Rhode Island Red, New Hampshire, Plymouth Rock, etc.)
- Class 138 - Meat-Type Chickens–Pen of 3, standard-bred, crossbred, or strain cross birds of the same sex to be judged on meat production qualities only. Cornish cross/broilers 5 to 8 weeks of age. (County Competition Only)
- Class 139 - Turkeys, all breeds–1 bird of either sex
- Class 140 - Ducks, Standard Old–1 old bird of either sex
- Class 141 - Ducks, Standard Young–1 young bird of either sex
- Class 142 - Ducks, Bantam–1 bird of either sex
- Class 143 - Geese, all breeds–1 bird of either sex
- Class 144 - Pen of other fowl–2 birds (County Competition Only)

DIVISION H - RABBITS

Check in: Monday, July 20th | 7:00 AM – 10:00 AM

Judging: Tuesday, July 21st | 8:00 AM



SUPERINTENDENT: Will Johnson

ASSISTANT SUPERINTENDENT: Tom Little

Deadline for entries is **June 26th, 2020.**

1. Read GENERAL RULES.
2. Exhibitor **MUST** be present when rabbits are judged. Only another Butler County 4-H member may assist in getting a rabbit to and from the judging table.
3. Members may make one (1) entry per class, per breed, per variety. Each exhibitor is limited to a maximum of 18 rabbits.
4. Each member will furnish his own feed and watering cup. A coop space will be provided.
5. Each rabbit entered in any class is required to have a legible permanent tattoo in left ear, if not, entry will be eliminated. Tattoo must be healed by time of fair.
6. **Breed & variety must be listed on pre-entry or exhibit may be eliminated.**
7. Substitutions allowed in same class and breed.
8. Any rabbit shown at the Fair must be owned and in the possession of the 4-Her before July 1 of the current year.
9. The Superintendent will have the authority to require that some rabbits be shown on a carrier show basis. This will only be asked of 4-Hers with a large number of entries if coop space is not available.
10. There must be 5 rabbits shown in a breed to receive Special Awards.
11. All rabbits will be divided into age classes and judged according to their breed standard as listed in the ARBA "Standard of Perfection". Only breeds recognized by ARBA may be shown.
12. All exhibitors showing Rabbits at the fair must have completed the Youth Quality Care for Animals (YQCA) by June 1.
13. All Rabbit Exhibitors are required to attend the **Livestock Exhibitors Meeting on Saturday, July 18 at 3:30 PM** in the Livestock Arena. Information regarding rules, fitting and showing, etc. will be reviewed by the Extension Agents, Division Superintendents, and Fair Board.

Age Classes: Pre-junior * (under 3 months) classes only available in the following breeds: Beveren, Blanc de Hotot, Californian, Champagne D'Argent, Checkered Giant, American Chinchilla, Giant Chinchilla, Cinnamon, Creme D'Argent, New Zealand, and Palomino

Juniors (under 6 months)

Intermediate ** (6-8 months) classes only available in the following breeds:

American, Giant Angora, Beveren, Blanc de Hotot, Californian, Champagne D'Argent, Checkered Giant, American Chinchilla, Giant Chinchilla, Cinnamon Crème D'Argent, Flemish Giant, English Lop, French Lop, New

Zealand, Palomino, Satin and Silver Fox

Intermediate classes, eight months of age or over for breeds having Intermediate classes

Senior, six months of age or over for breeds other than those listed as having

BREEDING CLASSES - Only ARBA breeds may be exhibited.

- Class 151 - Pre-Junior Doe*
- Class 152 - Junior Doe
- Class 153 - Intermediate Doe**
- Class 154 - Senior Doe
- Class 155 - Pre-Junior Buck*
- Class 156 - Junior Buck
- Class 157 - Intermediate Buck**
- Class 158 - Senior Buck

FUR CLASSES

Exhibitor may pick one rabbit from those exhibited, or one from a meat pen, to enter in the fur class. (Only one entry in fur class.) If number and kinds of fur permit, class will be broken down into white and colored fur. This decision is up to the Superintendent and will follow ARBA rules.

- Class 159 - Normal fur, White
- Class 160 - Normal fur, Colored
- Class 161 - Rex fur, White
- Class 162 - Rex fur, Colored
- Class 163 - Satin fur, White
- Class 164 - Satin fur, Colored
- Class 165 - Angora wool, White
- Class 166 - Angora wool, Colored

MEAT CLASS

- Class 170 - Meat Class Exhibit will consist of a pen of three (3) rabbits, maximum weight - 5 1/2 pounds; minimum - 3 pounds; maximum age of 70 days each. Rabbits will be shown by breeds if numbers are sufficient to merit a class.

WEIGH-IN

All meat class rabbits will be weighed at the time of judging. All rabbits in the pen must be within the weight restrictions for that pen to be eligible to show for Champion or to be auctioned. Each member is limited to exhibit one meat pen.

SHOWMANSHIP

Sign-up will be at check-in and day of show. Open to club members exhibiting in this division and club members must own and exhibit rabbit shown. Three showmanship classes will be provided in this division - for club members 7-9, 10-13, and 14-18. Age is determined by January 1, 2020.

DIVISION I- SHEEP

Check in: Saturday, July 18th | 7:00 AM – 9:00 AM

Weigh-in: Saturday, July 18th | 9:00 AM – 10:00 AM

Judging: Sunday, July 19th | 4:00 PM

SUPERINTENDENTS: Kathy Wooderson & Byron Harvey

Deadline for entries is **June 26th, 2020.**

ALL SHEEP MUST BE INSPECTED BY FAIR VETERINARIAN BEFORE UNLOADING.

Market Sheep must weigh a minimum of 90 pounds to sell in the Livestock Sale.

There is no maximum limit.

1. Read GENERAL RULES, LIVESTOCK RULES, HEALTH REQUIREMENTS, AND LIVESTOCK SALE.
2. Ewe and Ram lambs, to be eligible to compete in the lamb classes, must have their lamb teeth.
3. Each exhibitor will be limited to a total of two breeding animals and two market animals.
4. Entries in the Market Lamb classes must be either wethers or ewes (no rams allowed) and are to be shown in slick shorn (less than 1/4-inch growth) above the hocks.
5. Sheep entries for the Livestock Sale must be made **TBA by the FAIRBOARD.**
6. Market animals which do not make minimum sale weight will show in special classes and will not be eligible to show for Grand and Reserve Grand Champion Market Lamb. They will not be allowed to sell in the Livestock Sale.
7. Blocking stands may not be set-up in the alley-ways.
8. Remove all blankets from Market Lambs before weighing.
9. Superintendents reserve the right to call for an inspection of an animal or animals by the Fair Veterinarian.
10. Commercial breeding ewes must be tagged by June 15 with an official 4-H tag. Tagging can be done by an approved leader or at the fairgrounds at the official tagging.
11. Registration or transfer papers for animals in the registered breeding classes must be in the name of the exhibitor by June 15. Breeding sheep may be co-owned and co-registered by two or more 4-Hers of the same family. All breeding sheep must have an individual identification in an ear. A flock tag, registration tag, or tattoo will be accepted.
12. All sheep will be required to be identified with an official USDA Scrapie Premise I.D. tag. This includes wethers. Lambs, under 8 weeks of age, accompanying their dams, are exempt from tagging requirements.
13. All exhibitors showing Sheep at the fair must have completed the Youth Quality Care for Animals (YQCA) by June 1.
14. All Sheep Exhibitors are required to attend the **Livestock Exhibitors Meeting on Saturday, July 18 at 3:30 PM** in the Livestock Arena. Information regarding rules, fitting and showing, etc. will be reviewed by the Extension Agents, Division Superintendents, and Fair Board.

BREEDING EWES

Spring born lambs (born January 1, 2020 and later)

Fall born lambs (born September 1 - December 31, 2019)

Yearlings (born September 1, 2018 - August 31, 2019)

REGISTERED

Class 170 - Spring born ewe lamb

Class 171 - Fall born ewe lamb

Class 172 - Yearling ewe

COMMERCIAL

Class 174 - Spring born ewe lamb

Class 175 - Fall born ewe lamb

Class 176 - Yearling ewe

A Supreme and Reserve Supreme Breeding Ewe will be selected from the Champion and Reserve Champion Registered and Commercial Ewes.

MARKET LAMBS

Lambs will be weighed at the fair without blankets. The animals in each class may be divided by weight so as to make two or more uniform classes.

Class 177 - Market Lamb

A Grand Champion Market Lamb and Reserve Grand Champion Market Lamb will be chosen from the weight classes (light, heavy, etc.)

FITTING AND SHOWMANSHIP CLASS

Sign-up will be at check-in and day of the show. Open only to club members exhibiting in this division and club member must own and exhibit animal fitted and shown. Three fitting and showmanship classes will be provided in this division - for club members 7-9, 10-13, and 14-18. Age is determined by January 1, 2020.

DIVISION J- SWINE

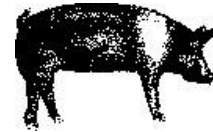
Check in: Saturday, July 18th | 7:00 AM – 9:00 AM

Weigh-in: Saturday, July 18th | 7:00 AM – 9:00 AM

Judging: Monday, July 20th | 6:00 PM

SUPERINTENDENTS: Mike Roths & Scott Chilcott

ASSISTANT SUPERINTENDENT: Theresa Toews



Deadline for entries is **June 26th, 2020.**

SWINE MUST BE INSPECTED BY A FAIR VETERINARIAN WHEN UNLOADED. ALL HOGS NEED TO BE CLEAN AT THE TIME OF INSPECTION. IF FAIR VETERINARIAN IS UNABLE TO INSPECT ANIMAL(S) DUE TO MUD, THE HOG(S) WILL NEED TO BE TAKEN OFF FAIRGROUNDS, CLEANED AND RETURNED TO CHECK-IN BEFORE 9:00 AM. SWINE WILL BE WEIGHED AT TIME OF UNLOADING.

Market Swine must weigh a minimum of 220 pounds to sell in the Livestock Sale. There is no maximum weight limit.

1. Read GENERAL RULES, LIVESTOCK RULES, HEALTH REQUIREMENTS, AND LIVESTOCK SALE.
2. Exhibitor will be limited to a total of two market animals and two breeding gilts.
3. Gilts and barrows may be shown in the Market Hog class. Barrows must be physically castrated to show.
4. Tack is to be unloaded in separate area, not in unloading area during check-in.
5. Swine entries for the Livestock Sale must be made by **TBA by the FAIRBOARD.**
6. Animals that do not make the minimum weight will show in a special class and will not be eligible to show for Grand or Reserve Grand Champion Market Hog. They will not be allowed to sell in the Livestock Auction.
7. Superintendents reserve the right to call for an inspection of an animal or animals by the Fair Veterinarian.
8. Feeding of animals in wash pens will not be allowed.
9. Water at the wash rack will be turned off at 4:00 PM on show night and 2:00 PM on sale night.
10. Breeding gilts will show first following by Fitting & Showing and Market Hogs.
11. All exhibitors showing Swine at the **Butler County** Fair must have completed the Youth Quality Care for Animals (YQCA) by June 1.
12. All Swine Exhibitors are required to attend the **Livestock Exhibitors Meeting on Saturday, July 18 at 3:30 PM** in the Livestock Arena. **Information regarding rules, fitting and showing, etc. will be reviewed by the Extension Agents, Division Superintendents, and Fair Board.**

BREEDING GILTS

Gilts must be born after **December 1, 2019.** Pedigreed gilts must have papers in 4-Her's name by June 15. All Pedigreed and Commercial breeding gilts must be tagged by June 15 with an official 4-H tag and ear notches included with tagging. Tagging must be done by an approved leader. Commercial gilts may be household nominated (see page 12 for household nominations). Class 210 may be divided by breeds if numbers warrant. Supreme

and Reserve Supreme Breeding Gilts: Open to the Champion and Reserve Champion in Classes 210 and 211.

Class 210 – Pedigreed

Class 211 – Commercial and Non-pedigreed

MARKET HOGS

All entries in the Market classes will be weighed at the fair. The animals in each class may be divided by weight to make two or more uniform classes.

Class 200 - Spotted Poland China

Class 201 - Chester White

Class 202 - Duroc

Class 203 - Poland China

Class 204 – Hampshire

Class 205 - Berkshire

Class 206 - Yorkshire

Class 207 - All other pure breeds

Class 208 - Crossbreds

Grand Champion and Reserve Grand Champion Market Hogs: Open to the Champion and Reserve Champion in the preceding classes. A minimum of 3 head required for a separate breed class in Market Classes.

FITTING AND SHOWMANSHIP CLASS

Sign-up will be at check-in and day of the show. Open to club members exhibiting this division and club members must own and exhibit animal fitted and shown. Three fitting and showmanship classes will be provided in this division - for club members 7-9, 10-13, and 14-18. Age is determined by January 1, 2020.

DIVISION K - ROUND ROBIN SHOWMANSHIP CONTEST

Contest: Tuesday, July 21st | 5:00 PM

SUPERINTENDENTS: Jeremy Nelson

ASSISTANT SUPERINTENDENTS: Kathy Wooderson, Jacob Cooper, & Ann Harvey & Livestock Superintendents

1. The Champion and Reserve Champion Showman from the Senior and Intermediate Divisions in Beef Cattle, Sheep, Meat Goats, Dairy Goats and Swine are eligible to compete for Grand Champion Livestock Showman and Reserve Grand Champion Livestock Showman.
2. If an exhibitor wins showmanship in more than one species he/she must choose which species will be shown in the Round Robin.
3. After an exhibitor is named Champion Showman or Reserve Champion Showman within a division (dairy goats, beef, sheep, meat goats, or swine), they may not qualify in any other species for Grand Champion Showman. In the event that one youth wins two species, the next highest showman will be chosen to compete in the Round Robin.
4. Exhibitors may show in subsequent showmanship classes.
5. For species with limited exhibitors: Should a contestant elect not to participate in the Round Robin, it will be their responsibility to permit the use of their animal for the purpose of the Round Robin contest. In the event that there is not a contestant from each specie, every effort will be made by species' superintendents to locate animals for use by the exhibitors in the Round Robin.
6. Participants will draw for the animal they will show in each species except the species being shown when they qualified for Round Robin competition.
7. Animals are to be clean but not fitted. This is strictly a showmanship contest.
8. Animals will be used from the top 5 winners of each age group in showmanship for each species. (as long as there are enough animals).
9. Previous winners of the Grand Champion Showman award at the fair are eligible to compete.

Age as of January 1, 2020

Intermediate: 10-13

Senior: 14-18

SECTION VI – 4-H DIVISIONS-OTHER 4-H PROJECTS

DIVISION L- CLOTHING CONSTRUCTION

Check-in for Judging: Saturday, July 11, 2020- 9:15 AM-9:45 AM

Judging Begins at 9:30 AM

Location: El Dorado High School

Check-in at Fair for display: Friday, July 17th | 5:00 PM – 7:00 PM



SUPERINTENDENTS: Carolyn Webb & Ann Harvey

BRING ENTRY CARD WITH EXHIBIT TO THE JUDGING.

Read GENERAL RULES.

1. All Clothing Construction Exhibits will be judged at the Fashion Revue on July 11, 2020. 4-Hers, leaders and parents are responsible for getting items there to be judged.
2. Members who wish to participate in Fashion Revue – Constructed Garments Revue must pre-enter in Division Q and follow rules listed for Fashion Revue.
3. All constructed items must be checked-in for display purposes at the fair on July 17th from 5:00 PM – 7:00 PM.
4. All work exhibited must be the product of the 2019-2020 club work.
5. Garments may be worn before exhibited but, if so, must be carefully laundered or cleaned before being exhibited.
6. Items may be entered in the State Fair if garment receives a purple ribbon. (If classes are available at State Fair and 4-H age requirement is met.)
7. Labels: Must be typewritten or printed on 3" x 2½ " piece of cloth attached on the inside of garment, back of neck, center back of waistband, or left end of apron band. Label must contain: Name, Class, and Club.
8. Club members may make no more than 5 entries in their age class plus 1 educational notebook.
9. Members can also bring a photo of themselves in the outfit for display at the fair.
10. Educational Classes - Share with others what you learned in this project. If a poster, it must not be larger than 22" high by 28" wide. May be a notebook or other display. Take care to select durable materials that will withstand Fair Conditions. Total display space must be no more than 12" high by 12" deep and 18" long. No card table displays are allowed. Name and club must be clearly marked on educational exhibit.
11. Educational Exhibits will be judged with other Clothing Construction entries on Saturday, July 11 and must be checked-in and displayed with the other Clothing at the fair.
12. The exhibitor may attach any information which would be helpful for the judge to know.
13. Exhibits may consist of an article, garment or outfit constructed or an educational exhibit prepared by the 4-Her.

Definitions:

Article—An item constructed in a clothing project, such as a backpack, laundry bag, garment bag, PJ's holder, tent, sleeping bag, cape, hat, scarf, or things suggested in

the Clothing and Textiles Curriculum—could be hand or machine sewn and could include applique or machine embroidering on items they have made.

Garment—A garment can be a skirt, vest, blouse, shirt, pair of slacks, dress, coat, jumper, jump suit, etc.

Age as of January 1, 2020

Class 221 - Junior Ages 7-9

Class 222 - Intermediate-Ages 10-13

Class 223 - Senior-Ages 14 and Over

Class 224 - Educational Exhibit

DIVISION M – CLUB BANNERS

Check in: Friday, July 17th | 5:00 PM – 7:00 PM

Judging: Monday, July 20th | starting at 10:30 AM or following Educational Notebooks

SUPERINTENDENT: Jennifer Johnson-Ikner

Deadline for entries is **June 26, 2020.**



1. Read GENERAL RULES.
2. Each club may exhibit a banner in each of the classes.
3. For Class 231 each banner should illustrate any phase or project of 4-H club work. It does not need to follow the theme “**Grow Your Vision of 4-H in 2020.**” No explanation is needed.
4. For Class 230, Conservation Banner - Banner must use the theme “**Grow Your Vision of 4-H with Pollinators**” which must appear on banner. Clubs should attach an explanation of the theme as it relates to a club project.
5. Clubs should avoid using copyrighted materials whenever possible by originating their work. Copyrighted and/or trademarked materials used for endorsement or promotion instead of educational purposes will be disqualified and will not be displayed or receive ribbons or premium.
6. Dimensions are to be no less than 12 square feet and no more than 16 square feet, with no side less than 3 feet.
7. Banners must be hung on a rod strong enough to support the banner. On each end of the banner rod there should be a chain six inches long. One end of the chain should be fastened to the end of the rod. The other end should be connected to an "S" hook which will permit the banner to be hung.
8. Banners should be made of materials that permit the banner to be folded or rolled without damaging the display. 3-D objects that are attached to the front of the banner cannot exceed 3 inches.
9. A label is to be attached to the front lower left-hand corner of the banner giving the name of the club and year. Letters on label should be two inches in height.
10. Banners are county competition only as there are no classes for Banners at the Kansas State Fair.
11. Interview judging will be offered. Club representatives should meet at the judging at **10:30 AM** to participate.
12. Banner must be current year's work. Clubs cannot reuse banner from a previous year.

Class 230 - 4-H Banner

Class 231 - Conservation Banner

Grow your Vision of 4-H with Pollinators!

Consider this, where would we BEE without pollinators?

Pollinators play a critical role in our everyday lives. To many of us, pollinators seem like annoying insects but they are actually a very important part of the web of life upon which we all depend. On planet Earth there are more than 100,000 species of insects, including bees, flies, moths, butterflies and beetles and over 1,000 species of other animals such as birds, reptiles and mammals, (including bats) that work hard as pollinators. It's important that we work to help them prosper by enhancing native pollinator habitats and protecting against pollinator declines. Our lives depend on pollinators!

4-H Clubs participating in the Conservation Banner must:

1. Follow the requirements set forth for banners in the Butler County 4-H Fair Book.
2. The theme (Grow Your Vision of 4-H with Pollinators!) must be displayed on the Conservation Banner.

Butler County Conservation District will award \$80 for Grand Champion, \$60 for Reserve Grand Champion and \$40 for Blue.

For more information about the theme, contact Butler County Conservation District at 316-320-3549

DIVISION N - EDUCATIONAL NOTEBOOKS, POSTERS AND DISPLAYS

Check in: Friday, July 17th | 5:00 PM – 7:00 PM

Judging: Monday, July 20th | 0:00 AM

SUPERINTENDENT: Deb Johnson

ALL EDUCATIONAL NOTEBOOKS, POSTERS AND DISPLAYS - BRING ENTRY CARD WITH EXHIBIT TO THE FAIR.

1. Read GENERAL RULES.
2. A 4-H member may exhibit a notebook, poster or display for any project they are enrolled in. Each exhibitor may enter one exhibit per project area. No 3-D items allowed. Check with other divisions. Check with other divisions - if a division has an educational exhibit class (for example: Foods, Clothing, Crochet/Knitting, Entomology or Horticulture) - enter within that division.
3. Notebook exhibits should be in a loose-leaf binder, and labeled with Name, Club and Project Area in the lower right corner of the front cover.
4. Poster exhibits must not be larger than 22 x 28 inches. Posters must be labeled with Name, Club and Project Area on the lower right-hand corner.
5. All standing tabletop displays may use a 2' x 3' (2x3 is 24 inches by 36 inches) or 3' x 4' (3x4 is 36 inches by 48 inches) tabletop display and must be labeled with Name, Club and Project Area in lower edge on right side.
6. Exhibits will be judged on general appearance, information, and organization.
7. 4-H exhibitor should avoid using copyrighted materials whenever possible by originating his/her work. Copyrighted and/or trademarked materials utilized in displays, posters or other activities for endorsement or promotion instead of educational purposes will be disqualified and will not be displayed or receive ribbons or premium.
8. For Shooting Sports only, exhibit boxes may be no larger than 36 inches wide x 24 inches long x 3 ½ inches deep. No card table exhibits allowed. See Rule #4 for poster size. Exhibits may contain no "live" ammunition, propellant or explosive powders. Exhibits may contain no working firearms. Broad heads, if displayed, must have the razor edges blunted. Exhibitors must have successfully completed one of the shooting sports project basic disciplines as certified by the Shooting Sports County Project Coordinator.

Class 235 - Educational Notebook

Class 236 - Educational Poster

Class 237 - Tabletop Display

Class 238 - Shooting Sports Educational Display or Promotion Poster

DIVISION O – ENERGY MANAGEMENT

Check in: Friday, July 17th | 5:00 PM – 7:00 PM

Judging: Saturday, July 18 | 2:00 PM

SUPERINTENDENT: Jennifer Carney



BRING ENTRY CARDS WITH EXHIBIT TO THE FAIR.

1. Read GENERAL RULES.
2. Each exhibitor may enter no more than three items.
3. Label each item, giving owner's name, club and name of article. Also indicate on label, whether "original construction" or "kit assembly". Label placed with masking tape or tied to exhibit is preferred.
4. All exhibits must be operable.
5. No hand-dipped solder may be used on exhibits.
6. Articles that have been in use should be cleaned for exhibit.
7. Exhibits may consist of any of the following:
 - a. AC projects such as household wiring, indoor lighting, outdoor wiring, shop lighting, extension cords, trouble lights, AC demonstration projects.
 - b. DC demonstration projects, motors, fans, heaters, blowers. All DC projects must include batteries supplied by the 4-Her.
 - c. Electronic kits or original projects. Must include plans for kits or original project. Judge should have access to examine the quality of wiring.
 - d. Educational Displays and Exhibits using a maximum tri-fold size display.
 - e. Small Engines which involve engines smaller than 20 horsepower and would be a display, poster or rebuilt small engine (Engine should contain no fuel in tank or carburetor).
 - f. Alternative Energy (a source of energy derived from a natural source, such as the sun, geothermal, wind, tides or waves) and could include displays or experiments.

See State Fair Rules for more information.

AGE as of January 1, 2020

Class 240 – Junior – ages 7-9

Class 241 – Intermediate – ages 10 to 13

Class 242 – Senior – ages 14-18

DIVISION P - ENTOMOLOGY

Check in: Friday, July 17th | 5:00 PM – 7:00 PM

Judging: Monday, July 20th | 1:00 PM

SUPERINTENDENT: TBA

BRING ENTRY CARD WITH EXHIBIT TO THE FAIR.

1. Read GENERAL RULES.
2. A 4-H member may choose to exhibit in the Entomology Collection, Entomology Notebook and/or Educational Display classes in the Beginning, Intermediate or Advanced phase in which they are enrolled.
3. Resources for exhibiting can be found on the State of Kansas 4-H Website-Entomology project page: <https://www.kansas4-h.org/projects/agriculture-and-natural-resources/entomology.html>

COLLECTION CLASSES General Guidelines

- A. All entries should be submitted in an 18 x 24 x 3.5-inch wooden display box with a clear plastic top. Boxes can be handmade or purchased if they are of the correct size and do not have a glass top.
- B. Identification should follow the taxonomy included in www.bugguide.net or the "Insects in Kansas; 2016 Revised Taxonomy" book (See rule #3 above).
- C. Each exhibitor is required to identify each box by placing identification labels bearing exhibitor's name, county or district, the class and the statement of taxonomy used:
 - a. "Insects in Kansas"
 - b. "Insects in Kansas Book" 2016 Revised Taxonomy" which follows www.bugguide.net.
- D. One label goes in the upper left corner of the box (inside) and the other on the lower right corner of the box (outside). Arrange specimens in the box so it can be displayed lengthwise.
- E. The number of orders, specimens (and families where required) must be included on the exhibitor's box identification label.
- F. Arrangement of specimens: the preferred method is to arrange the insects in groups or rows parallel to the short sides of the box. Specimens are to be arranged by order in the box, then family where required.
- G. Two labels should be centered on the pin beneath each specimen. First (closest to the specimen) is the common name label and the second label should include date/locality. Full county name and state abbreviation should be on the second label. Collector's name (or host) on the date/locality label is optional. The specimens should be collected by the exhibitor and should focus on Kansas and neighboring states.
- H. Please refer to "Entomology Collection Exhibit Resource" for full details on out-of-state insects in collections.
- I. Specimens of soft bodied insects such as aphids, lice, termites, etc. should be exhibited in alcohol filled vials; however, the use of alcohol filled vials should be limited to only those specimens that lose their shape when pinned, since the vials pose a significant hazard to the rest of the collection if they become loose in transit.

- j. Purchased insects are not to be exhibited in collections, but they may be used in educational displays.

Class 246 – Beginning I Collection

Display in one standard box a minimum of 50 and maximum of 125 species representing at least 7 orders. Follow the general guidelines listed for Collections. Members can exhibit in this class a maximum of 3 years, or until they receive a purple ribbon at the Kansas State Fair, whichever comes first.

Class 247 – Beginning II Collection

Display in one standard box a minimum of 75 and maximum of 150 species representing at least 9 orders. Follow the general guidelines listed for Collections. Members can exhibit in this class a maximum of 3 years, or until they receive a purple ribbon at the Kansas State Fair, whichever comes first.

Class 248 – Intermediate Collection

Display a minimum of 100 and a maximum of 300 species representing at least 10 orders. Two standard boxes can be used. Follow the general guidelines listed for Collections. In addition, family identification is required for all insects in any two of the following six orders: orders of Orthoptera, Hemiptera, Odonata, Coleoptera, Diptera, and/or Hymenoptera (only two will be counted for judging). Members can exhibit in this class a maximum of 3 years.

Class 249 – Advanced Collection

Display a minimum of 150 and a maximum of 450 species representing at least 12 orders. Three standard boxes can be used. Follow the general guidelines listed for Collections. Family identification is required for all insects belonging to the six basic orders as outlined under the Intermediate phase. Only families in the above six orders will be counted for judging. Family identification of insects in the remaining orders is optional, but desirable as long as accuracy is maintained. All butterflies appearing in the collection should be labeled with the correct common name. On a piece of paper list what you did to improve your collection during the current year (See state site for more information). Members may continue to exhibit in this class at the Kansas State Fair for an unrestricted number of years as long as they remain eligible for 4 H membership.

NOTEBOOK CLASSES General Guidelines (For additional information, please check the state website listed above.

- a. Individual entries are to be placed for display in a three-ring notebook for competition.
- b. Identification should follow the taxonomy included as listed in C on page 42, Rule #3.
- c. Each exhibitor is required to identify the notebook by placing a Title Page in the front of the notebook bearing the exhibitor's name, county or district and class. The number of orders, specimens and families (required in Intermediate and Advanced classes) must also be included on the Title Page.
- d. Species pages should be grouped according to order and should include one page per species.

- e. Date, common name, full county name, state abbreviation and collector name should be included for each species.
- f. If picture is taken on different dates/localities include information for both. A statement describing the host plant/habitat should be included.
- g. A divider page is to be placed in front of each order of insects with the order name printed on the tab for the page and also on the front of the divider page.
- h. For the Intermediate and Advanced classes, insects are also to be grouped by family behind each order divider.
- i. List on a sheet of paper how many years you have been in this division of the project and what you did this year to improve your project if you have been in for more than one year. Place the paper just behind the Title Page in the front of your notebook. A special project must be completed each year and included in the notebook. See project guideline materials for specifications.

Class 250 – Introductory Notebook

Display a minimum of 10 and a maximum of 30 insect species representing at least six different orders. Follow the general guidelines listed for Notebooks. A 4Her may exhibit in this class for a maximum of two years.

Class 251 – Beginning Notebook

Display a minimum of 30 and a maximum of 60 insect species representing at least seven different orders. Follow the general guidelines listed for all Notebooks. A 4-Her may exhibit in this class for a maximum of three years.

Class 252 – Intermediate Notebook

Display a minimum of 60 and a maximum of 100 species representing at least nine orders. Follow the general guidelines listed for Notebooks. Pictures in any two of the following six orders should be identified to family: Orthoptera, Hemiptera, Odonata, Coleoptera, Diptera, and/or Hymenoptera. A 4-Her may exhibit in this class for a maximum of three years.

Class 253 – Advanced Notebook

Display a minimum of 100 and a maximum of 200 species representing at least twelve orders. Follow the general rules listed for Notebooks. In addition, family identification is required for all insects in the following six orders: Orthoptera, Hemiptera, Odonata, Coleoptera, Diptera, and Hymenoptera. Family identification in the remaining orders is optional, but desirable as long as accuracy is maintained. Members may continue to exhibit in this class for an unrestricted number of years as long as they remain eligible for 4-H membership.

EDUCATIONAL DISPLAY CLASSES General Guidelines for additional information, please check the state website listed above.

- A. Share with others what you learned in this project. Exhibit any activity or learning experience related to the field of entomology or the Teaming with Insects

curriculum that does not fit into Entomology Collection or notebook classes above.
Follow copyright laws

- B. The exhibit may be, but isn't limited to, original works, digital presentations (must provide printed hardcopy for exhibit purposes for duration of state fair), programs, websites, games, apps, display box, notebook, display or poster which you have made.
- C. If the exhibit is a wooden display box, it must be 18 X24 X 3.5 inches with a clear plastic top (such as plexiglass) and displayed horizontally. If the exhibit is a poster, it must not be larger than 22" X 28". If the exhibit is a display, maximum size is not to exceed a standard commercial 3' X 4' tri-fold display board. **Trifold boards are encouraged.**
- D. Name and county/ district must clearly be marked on educational exhibits.
- E. Displays should include only work performed during the current year.
- F. Creativity is encouraged!

Class 254 – Beginning Educational Display

This class for individuals that are exhibiting in the Beginning I and II Collection or Beginning Notebook Classes. If only exhibiting in this category, then ages 9-12. Follow the general rules listed for the Educational Displays.

Class 255 – Intermediate Educational Display

Class for individuals that are exhibiting in the Intermediate Collection or Intermediate Notebook Classes. If only exhibiting in this category, then ages 11-14. Follow the general rules listed for the Educational Displays.

Class 256 – Advanced Educational Display

Class for individuals that are exhibiting in the Advanced Collection or Advanced Notebook Classes. If only exhibiting in this category, then ages 13 or older. Follow the general rules listed for the Educational Displays.

Q - FASHION REVUE

Check-in: El Dorado High School- Saturday, July 11, 2020

Constructed Garment Revue Judging begins at 8:00 AM

Buymanship Revue Judging begins at 9:00 AM

Public Fashion Revue at 1:00 PM, El Dorado High School Auditorium

Check-in at Fair for display: Friday, July 17th | 5:00 PM – 7:00 PM

SUPERINTENDENT: Joanna Hadley

ASSISTANT SUPERINTENDENTS: Sarah Cope, Carla Varner, Paula Soto, Elena Soto, Julianna Soto

Deadline for entries is **June 26th, 2020.**

1. Read GENERAL RULES.
2. Modeling scripts must accompany pre-entry. Scripts will be filled out using an online form provided with pre-entry information.
3. The garment(s) must have been made or purchased in the current 4-H year.
4. **Three classes for Fashion Revue. 4-Hers may exhibit in all three classes, if enrolled in respective area.**
 - a **Constructed Garments Revue**
 - b **Buymanship Revue**
 - c **COUNTY COMPETITION ONLY: Recycled Garment Revue**
5. Judging of the Fashion Revue **classes** will begin **at 8 AM**. Individual judging times will be scheduled closer to the date of event and you are required to appear for your scheduled time.
6. PUBLIC FASHION REVUE WILL BE HELD **Saturday, July 11 at 1 PM at El Dorado High School Auditorium**. THOSE PARTICIPATING IN THE JUDGING OF THE FASHION REVUE MUST PARTICIPATE IN THE PUBLIC FASHION REVUE.
7. AWARDS: No prize money will be paid in the Fashion Revue Division for classes 261-266. The judges shall designate a Grand Champion and a Reserve Grand Champion in the Junior, Intermediate, and Senior divisions of the clothing construction fashion revue phases, the female buymanship phases and the male buymanship phases.

AGE as of January 1, 2020.

Junior–ages 7-9 (All Jr. Classes are County Competition Only)

Intermediate–ages 10-13 (All Int. Classes are County Competition Only)

Senior–ages 14 and over

Constructed Garment Revue - Majority of the outfit must be constructed and modeled by the 4-Her who made the garment/outfit. Everything which is commonly considered an outer garment must be constructed (vest, jacket, dress, skirt, pants, coats, etc.) A sweater, blouse or shirt that is not worn as an outer garment can be purchased or made.

- Participant may model only what can be worn.
- Garments cannot be carried.
- Contestants should use good sense in choosing items that are appropriate to be modeled publicly.

- Constructed garments that are modeled in Fashion Revue must be checked-in 5:00 PM – 7:00 PM on Friday, July 17th for display at the Fair.
- Garments modeled in this class must also be entered in the appropriate class of Division L: Clothing Construction

Class 261 - Junior - Outfit from Clothing Construction phase

Class 262 - Intermediate - Outfit from Clothing Construction phase

Class 263 - Senior - Outfit from Clothing Construction phase

Class 264 - Junior - Outfit featuring article from Knitting or Crocheting project

Class 265 - Intermediate - Outfit featuring article from Knitting or Crocheting project

Class 266 - Senior - Outfit featuring article from Knitting or Crocheting project -
(County Competition Only)

MALE AND FEMALE BUYMANSHIP FASHION REVUE

- Contestants may enter no more than two entries per age class.
- Garments must be purchased for the 4-H project or made by another individual for the 4-Her if the fabric and pattern were chosen by the 4-Her. Everything which is commonly considered an outer garment must be purchased by the 4-Her or constructed by another person (vest, jacket, dress, skirt, pants, coat, etc.). A sweater, blouse, or shirt can be purchased or made.
- Contestants must bring a completed Fashion Revue Evaluation Scorecard to the judging. These forms can be found at: <https://www.butler.k-state.edu/4hfair/Fair%20Forms.html>
- Each exhibitor MUST display one buymanship outfit at the Butler County Fair. GRAND CHAMPIONS AND RESERVE GRAND CHAMPIONS IN ALL CLASSES (Classes 267-272) MUST be exhibited at the Butler County Fair. Exhibits MUST be checked-in 5:00 PM – 7:00 PM on Friday, July 17th.

FEMALE BUYMANSHIP

Class 267 - Junior (County Competition Only)

Class 268 - Intermediate (County Competition Only)

Class 269 - Senior

MALE BUYMANSHIP

Class 270 - Junior (County Competition Only)

Class 271 - Intermediate (County Competition Only)

Class 272 - Senior

Recycled Garment Fashion Revue

CLASS: 273

- In order to participate, youth must be enrolled in Butler County 4-H.
- Limited to one recycled garment per youth.
- Youth must also follow the rules and deadlines as those participating in Fashion Revue.
- Materials used in the construction of garments MUST be recyclable.

- Designers may use materials for construction (Ex. glue, tape, dyes, marker, staples, thread, zippers, elastic, wire, string, Velcro, buckram, grommets, laces, starch, paint)
- Recycled fabric may only be used as a lining that doesn't show. The usage of new material should not overpower your total garment.
- Garments must be constructed well enough to fit the model and hold together for the stage show. (Models are strongly encouraged to wear comfortable clothes underneath recycled garment).
- Originality and creativity are encouraged.
- Recycled fashions must be made of at least 75% recycled or reused materials that otherwise would be thrown away or recycled.
- Please make sure that materials used in fashion pieces are safe to yourself and the public.
- Garment Creation/Material Suggestions:
 - Consider how items can be cut, folded, molded, knotted, shredded, stitched, woven or reconstructed to make an outfit or specific sections within the design.
 - Scraps of textiles or tiles
 - Recyclables: paper, plastics, aluminum, steel, cardboard, magazines, books or phone books
 - Beverage bottle caps or six-pack rings
 - Burlap or plastic bags
 - Old toys or games pieces
 - Packaging materials
 - Found outdoor objects – pine cones, sticks, rocks, flowers, etc.
 - Food containers (cleaned out/sanitized)
 - Anything found from the garbage or recycling bin (cleaned/sanitized)

CLOVERBUD Fashion Revue Class (See page 64 for Cloverbuds Rules)

Class 501 - Cloverbud Outfit (County Competition Only)

- Cloverbud may select one outfit to model. They will model and have a short interview with the judge about their choice of attire.
- Cloverbuds will also participate in the Public Fashion Revue.

DIVISION R-1 - FOODS AND NUTRITION

Check-in: Saturday, July 18th | 9:00 AM – 11:00 AM

Judging: Saturday, July 18th | 9:00 AM



SUPERINTENDENTS: Stacy Scribner & Courtney Jackson

ASSISTANT SUPERINTENDENTS: Michelle Chilcott

BRING ENTRY CARD WITH EXHIBIT TO THE FAIR.

1. Read GENERAL RULES.
2. For food safety purposes, any food with custard and dairy-based fillings and frostings (example cream cheese), raw eggs, flavored oils, "canned" bread or bread or cakes in a jar, cut fresh fruit (including strawberry pies) any food requiring refrigeration (example bacon) or unbaked exhibit with raw flour, CANNOT BE EXHIBITED OR ENTERED. It will be disqualified. Refer to K-State Research and Extension publication 4H488, "Judges Guide for Foods and Nutrition Exhibits". If it is determined that the food may not be safe to consume, it will be sent home without being judged.
3. Alcohol is not allowed as an ingredient in food entries. Entries with alcohol in the recipe will be disqualified and not be judged.
4. All baked goods including loaf breads, layer cakes, cobblers, crumb cakes, etc. must be left whole and uncut. **Pies must be in a disposable pie pan.** Any baked product that can be removed from the pan should be placed on a plate, covered cardboard or disposable container. Other exhibits should be in food grade plastic bags, disposable plastic containers or boxes.
5. Snack mixes, such as trail mix or caramel corn, must be in full snack bag.
6. All unfrosted cakes should be exhibited in an upright position with crust showing. The exception is for those cakes made with special designs such as Bundt cakes. They should have top crust side down. Sponge, chiffon or angel food cakes are not frosted or glazed.
7. Small items, such as cookies and rolls, should be the same shape and from the same recipe. Exhibit 3 cookies, 3 muffins, 3 bread sticks, etc. At your discretion, you may exhibit muffins or cupcakes in paper liners.
8. Complete recipes are **REQUIRED** for all food product exhibits including decorated cakes; otherwise the ribbon will be lowered one placing.
9. **Label must be attached on the item and must provide the description of the product** (i.e. chocolate cake, spice bundt cake, chocolate chip sugar-free cookies, etc.) The exhibitor may attach any additional information which the exhibitor thinks would be helpful for the judge to know.
10. Under baked entries may be lowered one or more ribbon placings.
11. It is optional for the 4-Her to sell their food at the AUCTION. (Cookie Jars must sell.)
12. Recipes and instructions in the 4-H Food project are ONLY guidelines. Comparable recipes from other sources may be used.
13. Members are limited to a total of Six (6) food exhibits in R-1 Division.
14. Cake mixes can be used for Junior age group or as a starting point for Intermediate and Senior age group, including decorated cakes.
15. The judge will cut into each product in order for it to be judged.

ALL LEVELS - AGE as of January 1, 2020

Class 280 - Junior - ages 7-9

Class 281 - Intermediate - ages 10 to 13

Class 282 - Senior - ages 14-18

Class 283 - Sugar free, gluten free, dairy free product - must be a non-perishable sugar free, gluten free or dairy free product.

Class 284 - Candy - 3 pieces of candy on a small plate (not eligible for Special Award)

Class 285 - Modified Recipe - modified recipe is one that has been modified from the original recipe to nutritionally enhance the food product. Attach **one 8 ½ x 11-inch paper (front and back)** that includes original recipe, modified recipe, and narrative to describe modifications made. **Information may include** why modifications were made, and lessons learned such as nutritive value, or changes in appearance, doneness, aroma, flavor, tenderness and/or texture. (Example: a standard blueberry muffin recipe that is modified to make it gluten free.)

Suggested resources:

- ‡ Altering Recipes for Better Health Purdue University
<http://www.extension.purdue.edu/estmedia/cfs/cfs-157-w.pdf>
- ‡ Altering Recipes for Good Health Texas A&M University -
<http://gillespie.agrilife.org/files/2013/02/Altering-Recipes-for-Good-Hea1.pdf>

Class 286 - Educational Exhibit Educational Exhibits: Exhibits may be in the form of a poster, notebook or display. Follow copyright laws and take care to select materials that will withstand the fair conditions. No card table displays are allowed. If the exhibit is a poster, it must not be larger than 22" x 28". Displays are not to exceed a standard commercial 3' x 4' tri-fold display board. Name and club must be clearly marked on educational exhibits. NOTE: A collection of your favorite recipes in a recipe box or notebook does not constitute an educational exhibit. (Judged with the Foods Judging on **Saturday, July 18th, 9:00 AM**).

Class 287 - 1 Decorated Cake – whole cake not a cupcake (County Competition Only)

Class 288 - Food Gift **Package**

1. No alcoholic beverages will be accepted. No alcohol should be included as an ingredient in food entries. Entries with alcohol in the recipe will be disqualified and not be judged.
2. A food gift package must contain at least 3 different homemade food items (prepared for human consumption), made by the 4-Her, in a suitable container no larger than 18" x 18" x 18" not including cellophane.
3. Prepared food items must have recipes attached with the entry. Additional homemade or purchased food items beyond the 3 minimum may also be included in the gift **package**. Home canned foods must follow Food Preservation rules and recipes. Canning jars should not be used for baking per manufacturer's instructions.
4. No fireworks or knives will be allowed.

5. On a recipe card, answer these questions:
 - a. What is the intended use?
 - b. What food safety precautions were taken during and after preparation?

- Class 289 - Cookie Jar (Theme is "Grow Your Vision of 4-H in 2020")
1. Prepare assorted, homemade cookies in a clear glass WIDE mouth jar of a gallon capacity.
 2. For food safety purposes, any food with custard and dairy based fillings and frostings (example cream cheese), raw eggs, flavored oils, "canned" bread or bread or cakes in a jar, cut fresh fruit or any food requiring refrigeration (example bacon) CANNOT BE EXHIBITED OR ENTERED. Refer to K-State Research and Extension publication 4H488, May 2012, "Judges Guide for Foods and Nutrition Exhibits". If it is determined that the food may not be safe to consume, it will be sent home without being judged.
 3. Each cookie should be wrapped separately in clear plastic wrap.
 4. Jar should contain not less than 5 kinds and no more than 8 kinds of cookies. Use whatever quantity cookies needed to fill jar completely. (For example: 3 of 1 kind, 6 of another kind and 5 of another kind, etc. or 6 of each kind).
 5. Jar attractively decorated, and cookies must be visible—will count 25% of score.
 6. Bring 1 cookie of each kind individually wrapped in clear plastic wrap and identified, so that judge may taste the cookie when judging. Put these in a flat box. (These will not be returned.)
 7. All Cookie Jars will be donated to the Butler County 4-H Council. The winning cookie jar will be presented by the exhibitor to the 4-H Volunteer(s) of the Year recognized prior to the Livestock Auction. All other Cookie Jars will be auctioned during the 4-H Food Auction on **Saturday, July 18 at 7:00 PM.**
 8. For classes other than 280-282, there must be 3 or more entries to receive an award. The winners must have received a purple ribbon.

FOOD AUCTION- Saturday, July 18 at 7:00 PM in the South Room of the 4-H/Community Building.

SUPERINTENDENT: Dereck Chilcott
 ASSISTANT SUPERINTENDENTS: Sarah Cope,
 Amy Cordell

SALE OF FOOD PRODUCTS

At the discretion of the 4-Her, all cookies, brownies, cakes, cupcakes, pies, food preservation, loaf quick breads, yeast breads, etc. may be placed in the Food Auction. Gluten-free, sugar-free and dairy-free items may be available in the sale.



Proceeds of the Food Auction go to 4-H Council to support Butler County 4-H Activities.

DIVISION R-2 - FOOD PRESERVATION

Check-in: Saturday, July 18th | 9:00 AM – 11:00 AM

Judging: Saturday, July 18th | starting at 9:00

SUPERINTENDENTS: Stacy Scribner & Courtney Jackson

ASSISTANT SUPERINTENDENTS: Michelle Chilcott

BRING ENTRY CARD WITH EXHIBIT TO THE FAIR.

1. Read GENERAL RULES.
2. All exhibits must have been preserved since **August 1, 2019**.
3. Recipes and processing methods from the sources below are recommended. Recipes must be from 1995-Present AND MUST BE ADJUSTED FOR ALTITUDE based on your processing location or it will be disqualified. Processing methods that will be disqualified include: open kettle canning, oven canning, sun canning and using electric multi-cookers. Untested recipes will be disqualified for food safety reasons.

Tested Resources include:

- a. K-State Research and Extension Food Preservation publications
 - b. Other University Extension Food Preservation publications
 - c. USDA Complete Guide to Home Canning
 - d. So Easy to Preserve, 6th edition, The University of Georgia Cooperative Extension Service
 - e. Ball Blue Book Guide to Preserving
 - f. Ball Complete Book of Home Preserving
 - g. All New Ball Book of Canning and Preserving
 - h. Canning mixes (i.e. Mrs. Wage's, Ball)
 - i. Pectin manufacturers (i.e. Sure-Jell, Ball)
 - j. <http://www.rrc.k-state.edu/preservation/recipes.html>
4. Refer to the following K-State Research and Extension publications for more information:
- a. 4H712, Food Safety Recommendations for Food Preservation Exhibits (<http://www.ksre.ksu.edu/bookstore/pubs/4H712.pdf>)
 - b. MF3170 "10 Tips for Safe Home-Canned Food" (<http://www.ksre.ksu.edu/bookstore/pubs/MF3170.pdf>)
 - c. MF3171 "Sassy Safe Salsa at Home" (<http://www.ksre.ksu.edu/bookstore/pubs/MF3171.pdf>)
 - d. MF3172 "What's Your Elevation?" (<http://www.ksre.ksu.edu/bookstore/pubs/MF3172.pdf>)
 - e. MF3241 "How to Guide to Water Bath Canning and Steam Canning" (<http://www.bookstore.ksre.ksu.edu/pubs/MF3241.pdf>)
 - f. MF3242 "How to Guide to Pressure Canning" (<http://www.bookstore.ksre.ksu.edu/pubs/MF3242.pdf>)

5. NO PROVISION will be made for Frozen Food Exhibits.
6. **Hole punch the entry card and use a rubber band to attach the entry card and recipe around the top of the jar.**
7. Each exhibit must have a complete recipe and instructions attached with entry card which includes: **Exhibitor's Name, source of recipe and page number, date of publication, and altitude where food was processed.** If using Mrs. Wages or Ball mixes, indicate the date the mix was purchased.
8. Labels: Each container exhibited must be labeled. Labels are available at the County Extension Office. Label must include the name, club, class number, product, canning method used (water bath, weighted gauge or dial gauge pressure method, date processed including month and year, process time, amount of pressure (psi), and altitude where preserved. Label must not cover jar brand.
9. No fancy packs unless recipe states to do so (example: Pickled Asparagus).
10. Failure to add the recipe card or information requested above may be lowered 1 ribbon placing or disqualified.
11. Exhibits must be sealed in non-decorated, clean standard canning jars with matching brand two-piece lids. Do not use the colored jars. Do not add fancy padded lids, fabric over wraps or cozies as they interfere with the judging process. Jelly must be in 4 oz. jars, 1/2-pint (8 oz.), 12-ounce or pint jars (16 oz.) and salsa in pint jars. All other products must be in pint, 24-ounce or quart jars. Use pint jar canning process recommendations for 12-ounce jars and use quart jar process recommendations for 24-ounce jars. Sealing rings must be removable and jars clean and free from rust.
12. For food safety reasons, the size of jars used must not be larger than the jar size stated in the recipe.
13. The exhibitor may attach any information which the exhibitor thinks would be helpful for the judge to know.
14. Entries with alcohol in the recipe will be disqualified and not be judged.
15. Food Preservation exhibits may sell in the FOOD AUCTION but are not required to do so. All Food Preservation exhibits not selling in the Food Auction will be displayed during the fair.
16. Members are limited to a total of FIVE entries in this division, R-2. Foods entered in the R-1 Foods & Nutrition Division do not count in Food Preservation entries.

Class 292 - Food Preservation-1 Jar

Examples: sweet spreads, fruits, juices, tomatoes, tomato products, low acid vegetables, pickles, relishes, meats, etc.

Class 293 - Dried Foods

Dried products must include the recipe and preparation steps. If dried food product is not in a canning jar, it will be lowered one ribbon rating.

Suggested amount: 1/3 to 1/2 cup or three or four pieces per exhibit. All meat jerky MUST be cooked to 160 degrees F before drying. This is not the drying temperature. For recommendations see "Dry Meat Safely at Home" (<http://www.ksre.ksu.edu/bookstore/pubs/MF3173.pdf>).

DIVISION S - GEOLOGY & LAPIDARY

Check in: Friday, July 17th | 5:00 PM – 7:00 PM

Judging: Monday, July 20th | 1:00 PM

SUPERINTENDENT: TBA

BRING ENTRY CARD WITH EXHIBIT TO THE FAIR.



1. Read GENERAL RULES.
2. Exhibit boxes should be 18" x 24" x 3½". Plexiglass covers are required. Boxes with glass covers will NOT be accepted. All specimens are to be arranged across the narrow (18") dimension of the exhibit box, making the exhibit 18" across the top and 24" deep. If a box has a sliding plexiglass cover, it must be removable from the top. Screws, locks or other devices that would prevent judges from removing cover should not be used.
3. Each entry is to be identified by a label bearing name, county, and number of specimens in the upper left corner of the box (inside-use clear double-sided tape to adhere gummed labels), and by attaching a label with the same information on the back of the box.
4. Specimens should be labeled with the number of the specimen, date collected, specimen name or description, and locality (county) where collected.
5. For Geology Classes 300, 301, 302, and 303, specimens should be mounted in the box by proper groups: rocks, minerals, fossils. Fossils must be identified to the Phylum, Class, and Genus level. More than one specimen of the same kind of rock or mineral or species of a fossil may be exhibited if this duplication represents different geological formations. Specimen label must show this distinction (Fort Hays limestone, not just limestone; exact species must have different formation names listed on the I.D. card; Composite Brachiopod from Morrill Limestone not just Brachiopod or Composita Brachipod).
6. All specimens must be collected from locations in Kansas for classes 300, 301, 302, and 303. Out-of-state specimens will not be counted in the minimum number for the class, nor will they be considered in the judging.
7. Exhibitor may enter in both Geology and Lapidary Classes. May make only one entry in classes 300 thru 303. Exhibitor may also show in Geology Class 304 and one or more of the lapidary classes.

Class 300 - Display at least 15 rocks, minerals, and fossils collected during the current 4-H year. Limited to one exhibited box 18" x 24" x 3½" with plexiglass. Only those exhibiting at County Fair for the first time may enter this class.

Class 301 - Display at least 30 different rocks, minerals, and fossils, at least 5 of each. Fifteen must be collected during the current 4-H year. Limited to one exhibit box, 18" x 24" x 3½" with plexiglass cover. This class is open to those exhibiting either first or second time at County Fair.

Class 302 - Display at least 45 rocks, minerals, and fossils, at least 5 of each. Fifteen must be collected during the current 4-H year. Exhibit limited to two boxes. List as igneous, metamorphic or sedimentary. These rock types must be spelled out on labels or have a legible key. This class is open to those exhibiting either the third or fourth time at County Fair.

Class 303 - Display at least 60 rocks, minerals, or fossils, at least 5 of each. Fifteen must be collected during the current 4-H year. Exhibit limited to two boxes. List as igneous, metamorphic or sedimentary. These rock types must be spelled out on labels or have a legible key. This class is open to those exhibiting the fifth time or more at the County Fair.

Class 304 - Exhibit relating to everyday living; or to a mineral test, a rock formation, geological history, species of fossil, forms of one mineral, a variation of one kind of rock, archeological artifacts, or Indian artifacts. Exhibit limited to 4 feet of the table space or to no more than two exhibit boxes. Care should be taken to use durable materials that will withstand County Fair conditions. Exhibitor may show in the class regardless of number of times he/she has exhibited at County Fair or whether exhibitor has entries in classes 300, 301, 302 and 303. Exhibitor may also exhibit in Lapidary Class.

The lapidary will be judged on the following criteria: Workmanship - 60 points

Presentation and Showmanship - 30 points Accuracy of Information - 10 points

Class 305 - Lapidary. Display at least 30 stones and minerals that will cut or polish. Five of the specimens must be collected by the member from the native site (not limited to Kansas.) Polish 15 of the gemstones by tumbling. Label, giving identification of material and county where collected or state or county of origin for non-Kansas material.

Class 306 - Lapidary. Exhibit at least 6 gemstones and minerals that have received lapidary treatment. Lapidary treatment may consist of tumbling, polishing, and end or face or flat lapping. Specimens must represent at least 3 different gemstones and minerals and include at least 3 cabochons of any size or shape. Three of the specimens must be mounted. Label specimens as appropriate including locality (state) where originated.

Class 307 – Mineralogy Display a minimum of 15 mineral specimens collected in Kansas, at least 5 of which have been collected during the current 4-H year. The minerals are to be grouped by mineral class (i.e. Carbonates, Oxides, Silicates) and at least 3 classes must be represented. The member must use one standard display box. The specimens must be labeled with the number of the specimen, date collected, name of specimen, county where collected, and chemical composition (i.e. CaCo₃ for calcite), if known.

DIVISION T-1 - VISUAL ARTS: ARTS AND CRAFTS

Check in: Sunday, July 19th | 9:30 AM – 11:30 AM

Judging: Sunday, July 19th | 10:00 AM

SUPERINTENDENTS: Staci Nichols & Amy Cordell

ASSISTANT SUPERINTENDENTS: Carolyn Webb

BRING ENTRY CARD WITH EXHIBIT TO THE JUDGING.

1. Read GENERAL RULES.
2. All exhibits must be the result of the current club year work.
3. To exhibit, a member must be enrolled in Arts and Crafts in Butler County.
4. Each 4-Her will be allowed a total of 6 entries.
5. IF EXHIBIT HAS BEEN MADE FROM A KIT, IT MUST BE STATED ON THE EXHIBIT LABEL. NO PLASTIC MODEL KITS OR PAINT-BY-NUMBERS WILL BE ELIGIBLE TO ENTER.
6. No boxes can be stored in the building.
7. Ceramic articles must be made by the exhibitor and can be clay or greenware items.
8. EXHIBITS MUST BE LABELED WITH NAME, AGE, CLUB, YEARS IN CRAFT WORK AND YEARS IN CLASS ON THE BACK SIDE OR BOTTOM OF THE EXHIBIT.
9. It is suggested that sketching be covered in plastic.
10. Exhibits may include: sketching, painting, drawing, sculpture, carvings, ceramics, taxidermy and other creative arts.
11. All sketchings, paintings, drawings, canvas, or other exhibits which need to be hung, **MUST** have the appropriate sawtooth hanger, rod, wire, or other mechanism attached in order to be properly displayed. The sawtooth hangers must be screwed or nailed in.
12. The exhibitor may attach a 4" x 6" card with any information which the exhibitor thinks would be helpful for the judge to know.
13. Firearms and weapons (including but not limited to items resembling a firearm or weapon) are not allowed to be entered or exhibited.
14. Participation in the Kansas State Fair is determined by the entry quota Butler County is allotted from the State 4-H Office. Judges will pick a top 10 overall. Extension Office will contact youth in order to fill the allotted spaces available.
 - a. Kansas State Fair is participation only in this division. Exhibits are for display only, and will not be judged.

AGE as of January 1, 2020

Class 310 – Junior – ages 7-9

Class 311 – Intermediate – ages 10 to 13

Class 312 – Senior – ages 14-18

Class 313 – Team Exhibit – County Competition Only. This class may be entered by any team of two or more arts and crafts project members. A 4-Her may be on only one team. The team entry may be made in addition to individual entries. This class will be excluded from any awards.

DIVISION T-2 - FIBER ARTS

Check in: Sunday, July 19th | 9:30 AM – 11:00 AM

Judging: Sunday, July 19th | 10:00 AM

SUPERINTENDENTS: Christy Borg-Anderson & Lori Goebel

ASSISTANT SUPERINTENDENT: Kristina Willour

BRING ENTRY CARD WITH EXHIBIT TO THE FAIR.

1. Read GENERAL RULES.
2. All exhibits must be the result of the current club year work.
3. To exhibit, a member must be enrolled in Fiber Arts in Butler County.
4. Each 4-Her will be allowed a total of 6 entries.
5. Articles cannot be used during the Fashion Revue.
6. Identification Label:
 - a. Type or print on 3"x 2 1/2" piece of cloth: name, class number, and club. The Extension Office has labels available.
 - b. Sew or safety-pin this ID label on the corner of flat articles.
 - c. For garments, attach ID label to the front left shoulder seam, or left side of waistband, as if you were wearing the garment.
7. When articles which are normally worn together are exhibited, both articles must be shown together. Fasten articles together securely with safety pin.
8. The exhibitor may attach a 4" x 6" card with any information on what parts of the exhibit they made, processes used, or other information which the exhibitor thinks would be helpful for the judge. For all items, please indicate if item was made from a kit.
9. All exhibits which need to be hung should have the appropriate sawtooth hanger, rod, wire, or other mechanism attached in order to be properly displayed. The sawtooth hangers must be screwed or nailed in. Exhibit will not be displayed if the necessary hardware is not attached.
10. By definition fiber arts are:

Needle Arts: an article created by hand using any of the following techniques: a) embroidery and cross-stitch; b) needlepoint; c) candle wicking; d) crewel; e) lacework; and/or f) applique.

Patchwork or Quilted Article: It is an acceptable practice for the exhibitor to create the patchwork or quilted article and have someone else quilt it. Indicate quilter's name.

Rug Making: acceptable techniques include braiding, latch hook, tying, floor cloth, etc. The finished product should be an item that would be an item used in the home.

Spinning: a skein - minimum 10 yards in length.

Weaving: Members should attach information about the type of loom or process used.

Ethnic Arts: This is defined as a Fiber Art technique that is associated with a specific country or culture. It is a practical skill that was developed to provide basic family needs such as apparel, home furnishings or decorations. It is also defined as a method that has been maintained throughout history and passed on to others, often by observation and by example, such as batik, Swedish tuck towel weaving, mud cloth,

bobbin weaving, tatting, etc. Members should attach information on the history of the ethnic fiber art, where it was used, by whom, how it was used, short description of the technique, etc. Macramé: an article

11. Tied blankets and pillows are not considered Fiber Arts. Enter in Arts & Crafts Division.

AGE as of January 1, 2020

Class 320 – Junior – ages 7-9

Class 321 – Intermediate – ages 10 to 13

Class 322 – Senior – ages 14 and over

DIVISION T-3 –FIBER ARTS: CROCHET

Check in: Friday, July 17th | 5:00 PM – 7:00 PM

Judging: Sunday, July 19th | 2:00 PM

SUPERINTENDENT: Debora Claassen

ASSISTANT SUPERINTENDENT: Theresa Toews

BRING ENTRY CARD WITH EXHIBIT TO THE JUDGING.

1. Read GENERAL RULES.
2. All crochet exhibits will be judged on **Sunday, July 19th, 2:00 PM** at the Fair.
3. Club members may make **ONLY FOUR** entries, one of which may be an educational notebook.
4. When articles which are normally worn as pairs are exhibited, both articles must be shown together. Fasten articles together securely with yarn.
5. Use a clothing label available from the Extension Office or create your own. Labels must be 3" x 2½" inches and include name, class number and club. Label must be attached to the inside or back of the article.
6. The exhibitor may attach any information which the exhibitor thinks would be helpful for the judge to know.
7. Members who wish to participate in Fashion Revue must pre-enter in Division Q. Members who do participate in Fashion Revue must bring their items to be checked-in **Friday, July 17th** and judged at the fair on **Sunday, July 19th**.

Class 330 - Article, first year crocheters only

Class 331 - Article, 7-9 years of age

Class 332 - Article, 10-13 years of age

Class 333 - Article, 14-18 years of age

Class 334 - Educational Notebook

DIVISION T-4 - FIBER ARTS: KNITTING

Check in: Friday, July 17th | 5:00 PM – 7:00 PM

Judging: Sunday, July 19th | 2:00 PM

SUPERINTENDENT: Debora Claassen

ASSISTANT SUPERINTENDENT: Theresa Toews

BRING ENTRY CARD WITH EXHIBIT TO THE JUDGING.

1. Read GENERAL RULES.
2. All knitting exhibits will be judged on **Sunday, July 19th** at the Fair.
3. Club members may make **ONLY FOUR** entries, one of which may be an educational notebook.
4. When articles which are normally worn as pairs are exhibited, both articles must be shown together. Fasten articles together securely with yarn.
5. Use a clothing label available from the Extension Office or create your own. Labels must be 3" x 2½" inches and include name, class number and club. Label must be attached to the inside or back of the article.
6. Special consideration will be given to articles which are of original design. Such articles should have a note attached explaining the original design.
7. The exhibitor may attach any information which the exhibitor thinks would be helpful for the judge to know.
8. Members who wish to participate in Fashion Revue must pre-enter in Division Q. Members who do participate in Fashion Revue must bring their items to be checked-in **Friday, July 17th** and judged at the Fair **on Sunday, July 19th**.

Class 340 - Article, for first year knitters only

Class 341 - Article, 9 years old and younger

Class 342 - Article, 10-13 years of age

Class 343 - Article, 14 years of age and older

Class 344 - Machine-knitted article, all ages

Class 345 - Loom-knitted article, all ages

Class 346 - Educational Notebook

DIVISION T-5 - VISUAL ARTS: LEATHERCRAFT

Check in: Friday, July 17th | 5:00 PM – 7:00 PM

Judging: Sunday, July 19th | 12:00 PM

SUPERINTENDENT: Ashley Toews- Anderson

BRING ENTRY CARD WITH EXHIBIT TO THE FAIR.

1. Read GENERAL RULES.
2. Exhibitor must be enrolled in the Leathercraft project.
3. Each exhibitor is limited to not more than a total of 6 entries in the division.
4. Original designs - include patterns.
5. Bring all leather projects in see-through plastic bags.
6. Leathercraft exhibits may be stamped, braided, tooled or other leathercraft article.
7. Leathercraft exhibits are county competition only.

AGE as of January 1, 2020

Class 350 - Junior – ages 7-9

Class 351 - Intermediate – ages 10 to 13

Class 352 - Senior – ages 14-18

DIVISION U – PHOTOGRAPHY

Check in: Friday, July 17th | 5:00 PM – 7:00 PM

Judging: Monday, July 20th | 12:00 PM

SUPERINTENDENTS: Jennifer Carney & Kathy Wooderson

ASSISTANT SUPERINTENDENTS: TBA

BRING ENTRY CARD WITH EXHIBIT TO THE FAIR.

1. Read GENERAL RULES.
2. Each exhibitor can have **no more than 5 entries regardless of class in this division.**
3. All exhibits must have been taken or made by the 4-H member since **August 1, 2019.**
4. All exhibits will be brought to the fair and put in boxes according to club name. Signup for judging will be at that time. ALL exhibits will be checked for proper size mounting with a template at a later time. Any photography not mounted properly will be lowered 1 ribbon.
5. All photographs submitted in classes requiring a single, vertical or horizontal 8" x 10" print are to be mounted across the narrow 11" dimension of an 11" x 12.5" sheet of white studio mount with the top edge of the print 1" below the top of the mount board and with the sides of the print equal distance from the two sides of the mount board. (White studio mount is available at the Butler County Extension Office along with more detailed instructions for mounting.) Remove all borders. A permanent mount must be made using a photographic adhesive spray. All photos must be no larger than 8" x 10" and no smaller than 7" x 9".
6. No lettering or imprinted date is permitted on the mount or on the photo. No underlays or borders are to be used. Photo will be lowered one ribbon placing for either lettering or imprinted data
7. Each exhibitor's name and club should be written on the back of the mount. 4-H entry cards should be attached with masking tape to the lower left edge of the mount board.
8. To protect exhibits from dust and moisture, it is required that mounted photographs are placed in plastic sleeves available at the Butler County Extension Office. No Ziploc bags allowed. **DO NOT SEAL SLEEVES.**
9. Photos with live subject(s) on railroad right-of-way or taken from railroad right-of-way property will not be judged or displayed.
10. Photographs taken with a digital camera and having no more adjustments than exposure, color intensity or correction, one click filter effects, red eye removal, cropping, dodging and burning should be entered in the standard color or black and white classes. HDR photos are to be entered in standard photo class.
11. The black and white class is for black and white prints only. Monochromatic prints, including sepia prints are considered color photos and must be entered in the appropriate age color photo class.
12. Appropriate photo subject matter is expected to follow 4-H standards. For a sense of prohibited subject matter, review the Kansas Code of Conduct; if it is not allowable at

a 4-H event, it is not allowable as a photograph at the County Fair. Code of Conduct on Page 11.

13. Copyright protections must be observed.
14. To enter Class 367, exhibitor must bring 1 mounted photo and another 8 x 10 photo (same photo but not mounted). The additional photo must be labeled with exhibitor's name and club on the back. This additional photo must be in a manila envelope which must be labeled with the name and club. By entering in Class 367, the exhibitor gives the Butler County Administration permission to use the photos on its website, financial reports, etc. See Special Awards for prizes.
15. Firearms and weapons (including but not limited to items resembling a firearm, weapon or photos of firearms and weapons) are not allowed to be entered or exhibited.
16. **Butler County Conservation Districts Conservation Photo Contest.** See class 369 below:
 - o Subject matter must be CONSERVATION PRACTICES (Contour Farming & No-Till Farming; Cover Crops; Critical Area Planting; Field Boarders; Grass Waterways; Livestock Management; Manure Storage and Runoff Control; Pest Management; Riparian Buffer; Terraces and Pollinator Habitat) within Butler County.
 - o All photos must be surrendered to the Butler County Conservation District immediately at the conclusion of the Fair. The winning photo will be entered into the Ks. Assoc. of Conservation Districts photo contest. The 4-H'er and parent will be required to sign a release form for the KACD; the Extension Agent will collect these photos at the conclusion of fair.
 - o Photos must be taken during the current 4-H year. Minor digital enhancements for cropping, red eye removal, filters and corrective functions are permitted; however, images that have been altered in any significant manner will be disqualified. Previously published photos may not be entered.

Photo entry must also include:

 - A typed brief description of the photo, date and location taken, name, age and the words "BUTLER COUNTY". This information must be included in the sleeve with the photo. You will also be required to provide your address to the Bu. Co. Conservation District.
 - A photo release form must be printed from the following website and included in the sleeve with your photo when submitted at Fair check-in: <https://www.butler.k-state.edu/4hfair/>.
 - You must follow the same mounting rules for this class as the 4-H classes, with the exception that all photos must be 8x10. See rule #5 above.

(Classes 360, 361, 362, 363, 364, 365 and 366 –See Photography Rule #10.)

Class 360 - Color photo taken by 4-Her, 1st year in the project

Class 361 - Color photo taken by 4-Her with 2 to 3 years in the project

Class 362 - Color photo taken by 4-Her with 4 or more years in the project

Class 363 - Black and white photograph taken by 4-Her, 1st year in the project

Class 364 - Black and white photograph taken by 4-Her with 2 to 3 years in the project

Class 365 - Black and white photograph taken by 4-Her with 4 years or more in the project

Class 366 - Action or Motion Photo – this photo shows action, motion or movement

Class 367 - Single Photo promoting Butler County (nature, places, way of life). (See Rule #15).

Class 368 - Digital Composite Image. Photo must be created from 2 or more originals taken by the exhibitor. Exhibitor must include a second 11 x 12 1/2 matte board mounted with standard size prints of the original photos, 3 x 5 card(s) explaining what manipulation was done and a standard size print of the final photo. Optional, may include prints of editing steps. Photos showing editing steps may be layered. Place both matte boards in the same protective plastic sleeve. See rule #11 for definition.

Class 369 – Conservation Photo – Single Photo for Butler County Competition only. See Rule 17 above

NOTE: Overall Grand and Reserve Grand are selected from Champions of Classes 360 thru 366.

DIVISION V-1 - PLANT SCIENCE: FLORICULTURE

Check-in: Saturday, July 18th | 12:00 PM – 2:00 PM

Judging: Saturday, July 18th | 1:00 PM

SUPERINTENDENT: Lesley Riddell-Koch

BRING ENTRY CARD WITH EXHIBIT TO THE FAIR.

1. Read GENERAL RULES.
2. Open only to members enrolled in any phase of Plant Science project.
3. Club members may make TWO ENTRIES in each class with no more than 8 total per exhibitor.
4. Interview judging will be done.
5. All materials (flowers) should be grown and collected rather than purchased, except for Class 387. In Class 385 and 386, the 4-Her must own these plants by May 1.
6. Information about exhibiting flowers can be found online in the publication "Preparing Cut Flowers for Exhibit" available at <http://www.ksre.ksu.edu/bookstore/pubs/4H826.pdf>.
7. Classes 383 to 387 are county competition only.

Judge's Score Card

Individuality (Catching the judge's eye)	25 points
Suitability of container	25 points
Quality and condition of flower and foliage	25 points
Harmony	10 points
Balance and Arrangement	15 points
Total	100 points

Class 380 - Single Cut Flower (Annual or Perennial) specimen exhibited with foliage in plain container. (No glass soda bottles.) Flowers in this class must have been grown by the exhibitor.

Class 381 - Flower arrangements (not foliage plant)-consideration given to quality, arrangement and choice of container

Class 382 - Dried flower arrangement (not foliage plant)

Class 383 - Arrangement using wildflowers

Class 384 - Arrangement in novelty container

Class 385 - Potted Foliage Plants (such as philodendrons)

Class 386 - Cacti and other succulents

Class 387 - Arrangement using silk flowers

DIVISION V-2 - PLANT SCIENCE: HORTICULTURE

Check-in: Saturday, July 18th | 12:00 PM – 2:00 PM

Judging: Saturday, July 18th | 1:00 PM

SUPERINTENDENT: Lesley Riddell-Koch

ASSISTANT SUPERINTENDENT: Lyle Shaffer

BRING ENTRY CARD WITH EXHIBIT TO THE FAIR.

1. Read GENERAL RULES.
 2. Products exhibited must have been grown in current year by club members exhibiting.
 3. Club members may make only one entry for each kind of fruit or vegetable up to 12 entries.
 4. Only 4-H club members enrolled in Plant Science may exhibit.
 5. See Educational Notebooks, Posters and Displays for information regarding Class 299.
 6. Information about horticulture can be found online in the publication "Exhibiting Fruits and Vegetables" available at <http://www.ksre.ksu.edu/bookstore/pubs/c405.pdf>.
- Class 390 - Small vegetable (plate of 12)–Example: green snap beans, yellow wax beans, radishes, other small vegetables
- Class 391 - Medium vegetable (plate of 5)–Example: cucumbers, cherry tomatoes, tomatoes, beets, white onions, yellow onions, red onions, bell peppers, other peppers, radishes, okra, parsnips, turnips, sweet potatoes, red potatoes, white or Russet potatoes, carrots, other medium vegetables
- Class 392 - Large vegetable (plate of 1)–Example: watermelon, summer squash, winter squash, pumpkin, eggplant, cabbage, cantaloupe, other large vegetables
- Class 393 - Best Garden Exhibit–Each exhibitor will be limited to a space 3' x 3' in which to exhibit products of club member's own garden. Products from the garden which have been canned may be included in the exhibit. Not over 50% of the exhibit shall consist of canned vegetables. Potatoes may be included. (County Competition Only)
- Class 394 - Garden Display of 5 different fresh vegetables and/or fruits. Each exhibitor is limited to 4 square feet of display space. Canned vegetables are not acceptable. Only one variety of each type of vegetable or fruit may be exhibited. The number of the five vegetables to be exhibited are as follows: large vegetables (watermelon, cabbage, etc.) - 1 each; medium vegetables or fruits (cucumbers, carrots, onions, apples, etc.) - 5 each; small vegetables or fruits (green beans, berries, etc.) - 12 each
- Class 395 - Fresh Culinary Herbs, 6 stems of ONE VARIETY of fresh herbs exhibited in a disposable container of water. Dried herbs not accepted. Examples include parsley, basil, dill, etc.
- Class 396 - Small Fruits, such as berries, ½ pint box
- Class 397 - Tree Fruits, such as apples or pears, plate of 5
- Class 398 - Grapes, 2 bunches
- Class 399 - Horticulture Notebook

DIVISION W-1 - SPACE TECH: ROBOTICS

Check in: Friday, July 17th | 5:00 PM – 7:00 PM

Judging: Tuesday, July 21st | 10:00 AM

SUPERINTENDENT: Dustin Tireman



Deadline for entries is **June 26, 2020.**

1. Read GENERAL RULES.
2. Each exhibitor may enter three robots constructed during the current year. Only one robot may be entered in each class.
3. Each entry must be accompanied by a card containing member's name, club, and number of years in the robotics project.
4. Each exhibitor is required to complete the "4-H Space Tech Robotics Exhibit Information Form" which is available at <https://www.kansas4-h.org/events-activities/fairs/kansas-state-fair>. This form must be attached to the outside of a 10" x 13" manila envelope.
5. The exhibit must include written instructions for operation, construction plans, one to three pages of project photographs or a 5-minute CD, DVD, or video presentation, and robot programming information, if applicable. This information should be placed inside the 10" x 13" manila envelope mentioned above. The robot must be operational and perform the task for which it was designed.
6. Each robot must be free-standing, without the need for additional supports in order to be moved or exhibited. In judging entries, the display method will NOT be considered. Judging will be based on the operation and the explanations of the functions of the robot.
7. Robots must have automated reticulated structures (arms, wheels, grippers, etc.).
8. Each exhibitor must be able to demonstrate how the robot operates and explain what is occurring with the robot and why.
9. Robot dimensions should not exceed 2 feet high, by 2 feet wide, by 2 feet deep. Weight may not exceed 15 pounds. If displayed in a case (not required or encouraged) the outside case dimensions may not be more than 26 inches in height,
10. Materials including but not limited to obstacles, spare batteries, and mats for testing the robot may be placed in a separate container, which is not included in the robots' dimensions, that container may not be larger than 576 cubic inches as measured along the outside of the container. (Examples: 4"X4"X36" or 4"X8"X18" or 6"X6"X16) The container, if used, and/or any large objects (such as mats or obstacles) should be labeled with the exhibitor's name(s) and county or district.
11. All electric components of the robot must be adequately covered or concealed with a protective enclosure. Paper is NOT considered an adequate enclosure or covering for electrical components.
12. Robots must be powered by an electrical, battery, water, or solar source only. Robots powered by fossil fuels/flammable liquids will be disqualified. All robots must include an on/off switch for operation. Robots that include weaponry of any kind will be disqualified. Weaponry is defined as any instrument, possession or creation, physical

and/or electrical that could be used to inflict damage and/or harm to individuals, animal life, and/or property.

13. Remote controlled robots are allowed under certain conditions provided that the robot is not drivable. Remote controlled cars, boats, planes and/or action figures, etc. are not allowed.
14. See State Fair Rules for more information.

Novice – One to Two Years in Robotics Project

- 405 - Robot made from a commercial (purchased) kit
- 406 - Robot designed and constructed by exhibitor. The robot must not be a mere modification of an existing robot kit or plan
- 407 - Programmable robot made from a commercial (purchased) kit
- 408 - Junk Drawer Robotics-based curriculum robot
- 409 - Robot designed and constructed by exhibitor or one from a commercial kit, that is operated by a remote-controlled device

Intermediate – Three to Four Years in Robotics Project

- 410 - Robot made from a commercial (purchased) kit
- 411 - Robot designed and constructed by exhibitor. The robot must not be a mere modification of an existing robot kit or plan
- 412 - Programmable robot made from a commercial (purchased) kit
- 413 - Junk Drawer Robotics-based curriculum robot
- 414 - Robot designed and constructed by exhibitor or one from a commercial kit, that is operated by a remote-controlled device

Professional – Five or More Years in Robotics Project

- 415 - Robot made from a commercial (purchased) kit
- 416 - Robot designed and constructed by exhibitor. The robot must not be a mere modification of an existing robot kit or plan
- 417 - Programmable robot made from a commercial (purchased) kit
- 418 - Junk Drawer Robotics-based curriculum robot
- 419 - Robot designed and constructed by exhibitor or one from a commercial kit, that is operated by a remote-controlled device

DIVISION W-2 - SPACE TECH: ROCKETRY

Check in: Friday, July 17th | 5:00 PM– 7:00 PM

Judging: Tuesday, July 21st | 10:00 AM

SUPERINTENDENT: Dustin Tireman

BRING ENTRY CARDS WITH EXHIBIT TO THE FAIR.

1. Each exhibitor may enter two rockets constructed during the current year. If two rockets are entered, one rocket must be entered as a “kit” and the second rocket must be entered as a “designed by exhibitor” rocket. The rocket must have been flown (see Rule #9). Each rocket exhibited must be able to stand freely by itself or be supported on a base not to exceed 4 ¼” thick x 8” square for small and medium size rockets. Support rods must not extend past the tip of the nose cone and support rods must remain in the upright position. DO NOT ANGLE. (Do not submit on a launch pad). Rockets greater than 4 feet tall can be displayed without a base or displayed parallel to the ground with up to 2 notched blocks not to exceed 4” in width and depth. Launch pads not acceptable to use as bases. In judging entries, the display method will NOT be considered. Judging WILL be based on quality of workmanship, and quality of finish.
2. Each entry must be accompanied by an entry card containing member’s name, club, and number of years of participation in the Space Tech: Rocketry project. Each exhibitor is required to complete the “4-H Space Tech Rocketry Exhibit Information Form” (dated 2015) which is available at the Butler County Extension Office. The report that accompanies the rocket must be limited to this form which is glued to a 10” x 13” envelope. Plans (or a photocopy) must be placed inside the envelope. This includes original design rockets. If a rocket kit has been modified structurally, notations need to be given indicating the changes made. One or more photographs of the rocket at the launch site are required. Photographs showing the rocket at the moment of ignition are preferred. Photographs should be mounted on one side of 8½” x 11” page.
3. Engines and ignitor are not permitted with the exhibit.
4. Angles of the fins must fall with a plus or minus 2 degrees’ variation.
5. Exhibit must be uniformly painted, smoothly finished, have decals applied smoothly, and be properly assembled according to accompanying plans.
6. Beginner kits with prefabricated fin assemblies and pre-finished rockets requiring no painting are NOT acceptable.
7. Exhibitors who exhibit a rocket using a size E engine or larger will be required to provide National Association of Rocketry (NAR) membership number on the exhibit information sheet.
8. Rocket is a high-power rocket if it used an “H” engine or larger to launch. The total impulse of all engines used in the rocket is greater than 20.01 Newton-seconds of thrust.
9. If a burn ban is in effect for Butler County, exhibitors are not required to launch their rocket(s) before being exhibited at the fair. All requirements for the launching of rockets and the documenting of the launching are suspended for the duration of the ban.
10. Exhibits that meet the above guidelines MAY NOT meet the qualifications for the Kansas

State Fair. Exhibitors may get a copy of the State Fair guidelines from the Butler County Extension Office. You may go to the State Fair 4-H Handbook on the Kansas State Fair website link: <http://www.kansas4-h.org/events-activities/fairs/kansas-state-fair/index.html>

Class 420 – Rocket (kit or original) exhibitors 9 years and under

Class 421 – Rocket made from kit, exhibitors 10-13 years of age

Class 422 – Rocket made from original materials, (no kit parts) 10-13 years of age

Class 423 – Rocket made from kit, exhibitor 14 years and older

Class 424 – Rocket from original materials (no kit parts) 14 years and older

Class 425 – Rocket designed by 2 or more exhibitors, not merely modification of an existing kit rocket – include original plans at check-in. (Not eligible for special awards).

DIVISION W-3 - UNMANNED AERIAL SYSTEMS

Check in: Friday, July 17th | 5:00 PM – 7:00 PM

Judging: Tuesday, July 21st | 10:00 AM

SUPERINTENDENT: Dustin Tireman

BRING ENTRY CARDS WITH EXHIBIT TO THE FAIR.

The 4-H unmanned aerial systems or UAS project explores the world from above the trees and discovers new frontiers with UASs. UASs are commonly known as Unmanned Aerial Vehicles (UAVs) or drones. Members explore the uses and applications of unmanned aerial systems including how UASs link to other projects such as geology, robotics, electronics, crop science and many more.

1. Read GENERAL RULES.
2. The 4-H members must be currently enrolled in the 4-H Space Tech project to exhibit in this division.
3. Each exhibitor may enter one exhibit per class.
4. The information that accompanies the UAS must be limited to the 4-H Space Tech Exhibit Information Form which is affixed to a 10" x 13" envelope. This envelope should NOT be attached to the UAS. This may be downloaded from www.KansasSpaceTech.com. Any UAS exhibit not including this completed envelope will receive a lower ribbon.
5. Exhibitor's name, club, age, and years(s) in project must be tagged or labeled in a prominent location on the exhibit.
6. Unmanned Aerial Systems that include or depict weaponry of any kind will be disqualified.

Junior: 9-13 years old

Class 426 - Unmanned Aerial System designed and constructed by exhibitor that is operated by a remote-controlled device. The UAS must not be a mere modification of an existing kit or plan. You may not exhibit a UAS that is purchased off the shelf in this class.

Class 427 - Practical application of an Unmanned Aerial System constructed from a commercial (purchased) kit. This includes the UAS, plus one or more of the following: video, notebook, poster, display board, etc. This class is separate from educational exhibits. A tangible use would be mapping Russian olive trees, eroded soils, and bindweed in fields, etc. There are also many other non-agricultural UAS uses that would be appropriate for this class.

Senior: 14 years and older

Class 428 - Unmanned Aerial Systems designed and constructed by exhibitor that is operated by a remote-controlled device. The UAS must not be a mere modification of an existing kit or plan. You may not exhibit a UAS that is purchased off the shelf in this class.

Class 429 - Practical application of an Unmanned Aerial System constructed from a commercial (purchased) kit. This includes the UAS, plus one or more of the

following: video, notebook, poster, display board, etc. This class is separate from educational exhibits. A tangible use would be mapping Russian olive trees, eroded soils, and bindweed in fields, etc. There are also many other non-agricultural UAS uses that would be appropriate for this class.

DIVISION X – WOODWORKING

Check in: Friday, July 17th | 5:00 PM – 7:00 PM

Judging: Saturday, July 18th | 2:00 PM

SUPERINTENDENT: Dustin Tireman



BRING ENTRY CARD WITH EXHIBIT TO THE FAIR.

1. Read GENERAL RULES.
2. A club member may make not more than two entries (except 433). EACH ARTICLE EXHIBITED MUST BE ACCOMPANIED BY THE PLAN, BLUE PRINT, OR WORKING DRAWING USED FOR CONSTRUCTION. Please note: a set of step-by-step instructions is not a plan. Missing or insufficient plans will be lowered 1 ribbon placing. Plans are not required for repaired or refinished furniture, but a brief explanation of the work completed must be attached to the exhibit.
3. Label each article showing intended use. Designate on the entry if the article is original or kit-construction.
4. Label each article giving owner's name, club and name of article. Label placed with masking tape, or tied to exhibit, is preferred.
5. In judging woodwork articles, consideration will be given to:
 - a. Usefulness
 - b. Choice of wood
 - c. Design
 - d. Suitability and quality of finish
 - e. Workmanship
6. Woodworking exhibits consist of woodwork article for farm and shop use, lawn furniture, household furniture, other woodwork article such as bird house, bread board, door stop, etc., piece of repaired and refinished furniture or any article made from a kit.

AGE as of January 1, 2020

Class 440 – Junior – ages 7-9

Class 441 – Intermediate – ages 10 to 13

Class 442 – Senior – ages 14-18

ALL UNITS

Class 443 – Team or group woodworking project – This class may be entered by any team of two or more woodworking project members. A 4-er may be on only one team. The team entry may be made in addition to individual entries. This class will be excluded from special awards.

DIVISION CB – CLOVERBUDS- (Must be 5 or 6 years of age AND enrolled as a Cloverbud)
Check-In and “Sharing”: **Saturday, July 18th | 1:00 PM - 2:00 PM**

SUPERINTENDENTS: Joanna Hadley & Deb Johnson
ASSISTANT SUPERINTENDENTS: 4-H Ambassadors

1. Must be enrolled as a Cloverbud by May 1 to exhibit. Cloverbuds must be age 5 or 6 by January 1 of the current year to participate in this program.
2. Cloverbuds may exhibit age appropriate activity related items from their 4-H Cloverbud experiences.
3. Cloverbuds may showcase a product, poster, or notebook for the display.
4. A Cloverbud may showcase a maximum of 5 items.
5. Cloverbuds will receive participation ribbons only, no premiums, and will not be judged.
6. Cloverbuds may participate in the Fashion Revue. See Fashion Revue Rules.
7. All other Cloverbud entries must be entered in the Cloverbud Department. (For example, a Cloverbud craft must be entered in the 4-H Cloverbud Division and NOT in the 4-H Arts and Crafts Division).
8. Cloverbuds may sign up for a time to “Show and Share” their item(s). “Show and Share” sign up & sharing will occur between **1:00 PM – 2:00 PM on Saturday, July 18.**

*NOTE: Special Cloverbud entry cards will be available during the Butler County Fair at the information booth. Do not use the entry cards used for 4-H or Open Class exhibits at the fair.

SECTION VII – JUDGING CONTESTS & OTHER EVENTS

1. Read GENERAL RULES.
2. All club members are eligible to compete in each contest for individual honors, and entry may be made at time of contest. No prior entry required.

FCS CONSUMER SKILLS JUDGING EVENT

CONTEST: Tuesday, July 21st | 1:00 PM – 3:00 PM

SUPERINTENDENT: Barbara Roths

Use your consumer skills and your senses to explore foods and flavors of Butler County.

HORTICULTURE JUDGING CONTEST

CONTEST: Wednesday, July 22nd | 1:00 PM – 2:00 PM

SUPERINTENDENT: Larry Crouse

PHOTOGRAPHY JUDGING CONTEST

CONTEST: Wednesday, July 22nd | 2:00 PM – 3:00 PM

SUPERINTENDENT: Melissa Scribner

ASSISTANT SUPERINTENDENT: Suzanne Mitsch

POULTRY JUDGING CONTEST

CONTEST: Tuesday, July 21st | 2:00 – 3:00 PM

SUPERINTENDENT: Jeremy Nelson

LIVESTOCK JUDGING CONTEST

CONTEST: Wednesday, July 22nd | 7:30 AM

SUPERINTENDENT: Charlene Miller

ASSISTANT SUPERINTENDENT: Joe Liebbrandt, Taylor Frank

There will be three divisions in livestock judging for Butler County 4-Hers.

Senior – 14-18 by January 1, 2020

Junior – 13 and under by January 1, 2020

Beginner – 13 and under by January 1, 2020 (first year judges)

BARNYARD OLYMPICS

Wednesday, July 22 following the Livestock Judging Contest in the Livestock Arena (~11:00 AM)

SUPERINTENDENTS: 4-H Ambassadors, Joanna Hadley, Deb Johnson
Team sign-Up in the North Room of the Community Building

Tuesday, July 21, 2:00 PM - 4:00 PM

Wednesday, July 22, 9:30AM - 10:30 AM

CHALLENGE OF CHAMPIONS

CONTEST: **Tuesday, July 21st | 2:00 – 3:00 PM**

CO-SUPERINTENDENTS: Darren Jackson, Courtney Jackson

1. Rules GENERAL RULES.
2. 4-H Members, 16 to 19 years 4-H age may participate. At 3:00 PM, the contest will be open to those 7-15 years of age (Junior group). No awards will be given to the junior group. It will be for educational only.
3. No contestant will be allowed to have books or notes, phones or electronics during the contest.
4. While the contest is in session there shall be no communication among contestants.
5. The first-place contestant qualifies to participate at the Kansas State Fair for the Challenge of Champions Contest.

Potential Format of Contest (may be subject to change)

1. Written test with questions concerning total agricultural/livestock industry, farm equipment, farm management and general agriculture
2. Identification of livestock equipment
3. Identify breeds of beef cattle, dairy, sheep, hogs and goats
4. Identification of concentrate and/or roughage
5. Identification of different retail cuts of meat
6. Identification of common crops (either plant or seed)
7. Identification of common weeds
8. Possible interview on agricultural current event topics, or general agriculture

Determination of ratings: Individual ranking shall be determined by total points of each contestant.