

THE 4-H NEWSLETTER

SEPTEMBER
2025

A Minute with Madeline



Finding Balance: Back to School and 4-H

September means sharpened pencils, packed lunches, and new schedules as youth across Butler County head back to school. For many of our 4-H members, it also means finding a rhythm that balances classroom learning, extracurricular activities, and 4-H involvement. While this can feel overwhelming at times, it's also a great opportunity for youth to develop important life skills like time management, organization, and responsibility.


One of the most helpful strategies is planning ahead. Encourage your 4-H'er to write down deadlines for schoolwork, practices, and 4-H activities in one calendar. Seeing everything in one place makes it easier to avoid conflicts and reduces last-minute stress. Many families find that having a visible family calendar at home helps everyone stay on track with meetings, practices, and events.

Prioritizing commitments is another key step. 4-H members often want to be involved in a wide variety of activities, which is wonderful, but it's also important to recognize limits. Having conversations about what matters most and setting realistic expectations can help ensure that youth are enjoying their experiences without becoming stretched too thin.

4-H also supports academic success rather than competing with it. The skills developed through 4-H projects—like public speaking, record keeping, teamwork, and problem solving—directly benefit students in the classroom. For example, preparing a 4-H presentation can strengthen confidence when giving a class report, and keeping project records teaches organization that transfers easily to managing school assignments.

Finally, remember that balance doesn't always mean doing everything equally—it means finding a routine that works for your family. Some weeks may be busier with school activities, while other times 4-H takes center stage. That flexibility is part of what makes 4-H such a valuable experience; it can grow and adapt alongside each young person's schedule and interests.

As we begin this new school year, we encourage families to use 4-H as a tool for supporting growth both in and out of the classroom. The lessons learned, friendships formed, and experiences gained will carry youth far beyond this busy season.



Fall for 4-H

LEADER'S LOUNGE

September Check-Up

- Encourage 4-H'ers to invite their friends to attend a meeting & join 4-H!
- Ask your 4-H parents to encourage others to get involved.
- Have a club information booth at your local schools.

Review

- Read the 4-H Newsletter and mark important dates on the calendar
- Review highlights from the 4-H Newsletter at your club meeting

Promote/Recruit

- Club participation at the Kansas State Fair
- Encourage older 4-H'ers to apply to be an Ambassador
- Club participation at the Achievement Celebration
- Encourage participation in National 4-H Week in October

To-Do

- Check in with Project Leaders to ensure they are on task and holding meetings
- Check club mailbox at the Extension Office
- Check club's progress toward goals
- Remind families to "Subscribe" to the 4-H Online broadcast messages. This is where all newsletters and important information is sent out to families!
- Help 4-H'ers plan and prepare record books
- Begin speaking with your Club about participating in the 4-H Open House
- Begin preparing yearly Club Summary
- Begin to discuss Club participation in 48 Hours of 4-H Service Challenge
- Check out the Kansas 4-H Club Resources page [HERE](#)

Remember

- Work with your co-leader!
- Work with 4-H Families to prepare and submit record books and award scholarship forms
- Pick-up of buyers' cards, ribbons, and returning signed buyers' cards by the deadline
- Remind 4-H Families to get enrolled for the new 4-H year beginning October 1st!

If your Club is planning to have a bake sale, fundraiser, make t-shirts, etc., please contact our office prior to doing so!



IMPORTANT DATES AND DEADLINES

September

- September 1: Labor Day - Extension Office Closed
- September 2: State Fair Project Drop-Off 3-6 p.m.
- September 3: State Fair Project Drop-Off 12-5 p.m.
- September 5-14: Kansas State Fair - Hutchinson
- September 9: 4-H Council Meeting
- September 20 State Archery Match - T.H.E. Wakarusa, KS
- September 22: All Pin Applications, Scholarships, Record Keeping Forms, Special Award Applications, Club Summaries, and Ambassador Applications Due by 5 p.m.
- September 27 State Fall Small Bore/Muzzleloading Match - Topeka
- September 29 & 30: Record Book Judging

October

- October 1: The 2025-2026 4-H Year Begins!
- October 1: Youth Council & National Conference Application Deadline
- October 3-5: Kansas Junior Livestock Show - Hutchinson
- October 5-11: National 4-H Week
- October 10: Club Quarterly Report Due
- October 10: Extension Mug Mingle
- October 11-12: 48 Hours of 4-H Service Challenge
- October 11-12: State Shotgun Match
- October 14: 4-H Council Meeting
- October 15: Kansas Youth Leadership Forum (KYLF) Registration Deadline
- October 18-19: 4-H Dog Conference - Rock Springs
- October 25-26: Shooting Sports Leaders Updates & Full Training - Cimarron, KS
- October 27: Butler County 4-H Open House
- October 31: 4-H Club Financial Reviews Due

November

- November 1: 4-H & IFYE Outbound Application Deadline
- November 8: Achievement Celebration
- November 8: Officer Training
- November 11: Veterans' Day - Extension Office Closed
- November 13: Understanding Developmental Relationships 4-H Volunteer Training
- November 22-23: Kansas Youth Leadership Forum - Rock Springs
- November 22-23: Kansas Association of 4-H Volunteers Forum - Rock Springs
- November 27-28: Thanksgiving - Extension Office Closed
- November 28-December 2: National 4-H Congress - Washington D.C.

See the full 2024-2025 Calendar [HERE](#)

2025 Kansas State Fair Information

We are excited about another fantastic Kansas State Fair coming up this September! Please make note of a few things...



Project Drop Off Information:

(Refer to the email sent to those entered)

- Entry drop-off will be Tuesday, September 2nd, from 3:00-6:00 p.m. OR Wednesday, September 3rd, from 12:00-5:00 p.m.
- There are two options for getting entry cards:
 - Entry cards can be picked up from the Extension Office
 - Cards will also be available at entry drop-off
- Score sheets need to be labeled and attached to your projects. If you do not have them at entry drop-off, we will have a limited number of them.
 - Score sheets can be found here: <https://www.kansas4-h.org/educational-experiences/fair-resources/kansas-state-fair/>
- If you plan to transport an item yourself to the State Fair, you have additional steps:
 - Pick up your entry cards from the Extension Office
 - Email dsratlif@ksu.edu with the youth's name and extension unit, a contact phone number, a planned time to deliver, and an item description.
 - Entries will be accepted on Wednesday, September 3rd, from 1:00 to 6:00 p.m. OR Thursday, September 4th, from 8:00 a.m. to 12:00 p.m.
 - Entries need to check in at the information counter in Centennial Hall when arriving, so staff are aware.
- If you are retrieving your own entry from the State Fair after it has been judged, please let Madeline Wallace know.
 - NO exhibits are to leave the building prior to Sunday, September 14th, at the release time of 6:00 p.m.
 - You need to let a contact at the Information Counter in Centennial Hall know they are picking up items.
- Entries will be picked up on September 15th. They will be available for you to pick up at the Extension Office after 2:00 p.m. that day.
- Make sure to consult the Kansas State Fair book for information regarding what is required for your specific project. The Kansas State Fair book can be found here: <https://www.kansas4-h.org/educational-experiences/fair-resources/kansas-state-fair/>



Butler County 4-H Shooting Sports



Butler County 4-H Members Participate in the Sedgwick County Archery Qualifier.



Small Bore State Qualifiers:

Jadon G.
Jonathon P.
Mikalyn P.



Archery State Qualifiers:

Karly P.
Mikalyn P.
Kendra G.
Rylan N.
Madalynn I.
Jadon G.
Sophie H.
River H.

Shotgun State Qualifiers:

Lane V.
Seth C.
Jonathon P.
Terrin F.
Logan D.
Noah T.
Hunter T.
Koa W.
Austin D.
Gus K.
Tyler B.
Tyler T.



Good luck to all of our Butler County 4-H Members that have qualified for State!



The Kansas Youth Leadership Forum will be November 22-23, 2025, at Rock Springs 4-H Center. The Forum is for youth ages 14-18, as of January 1, 2025. Registrations will be due on Wednesday, October 15, 2025. This event will include: speakers, workshops, consulting groups, and election of the State 4-H Council, and is a great opportunity for youth to build their leadership skills! Any Kansas 4-H member between the ages of 14 and 18 by January 1, 2025, may apply to be a council member. The duties of the Council Members include planning the next Youth Leadership Forum and other events, and may include assisting the State 4-H functions, working with 4-H public relations, and speaking at local achievement programs, forums, and other workshops or conferences. Applications for the State 4-H Youth Council will be available in the registration materials on the State 4-H website at <https://www.kansas4-h.org/educational-experiences/project-based-events/conferences-events/kansas-youth-leadership-forum/>

4-H Ambassadors

4-H Ambassadors—What are they?



The 4-H Ambassadors are a group of 4-H'ers between the ages of 14 & 18 (as of January 1) who are interested in being the face and voice of promotion for Butler County 4-H Activities.

They participate in and host events. Some events include Ambassador Day Camp, Barnyard Olympics at the Fair, Mini-Fair, help with the achievement banquet, and officer training. They also help promote 4-H! They have a lot of fun!

If you are interested in applying to become a member of the Butler County 4-H Ambassadors, applications are due in the Extension Office on September 22nd by 5:00 p.m. The Ambassadors are an energetic, fun group to be a part of. The application can be found online at <https://www.butler.k-state.edu/4-h/ambassadors.html>, or you can pick one up at the Extension Office. Join this fun group today!



RECORD BOOKS, PINS, APPLICATIONS, AND AWARDS

It's time to get your record book and pin applications updated!

DEADLINE FOR SUBMITTING THE DOCUMENTS LISTED BELOW—
5:00 p.m., Monday, September 22nd. All KAP's (record books)

- All KAP's (record books)
- Pin applications
- Club summaries
- College scholarship applications
- Reporter and secretary notebooks
- Ambassador applications
- Special award applications

Don't miss this deadline! All forms and information can be found
online at

ALL SUBMISSIONS DUE ON MONDAY, SEPTEMBER 22ND

All KAPs (record books), pin applications, ambassador applications, club summaries, college scholarship applications, reporter and secretary notebooks, and special award applications are due in the K-State Extension Butler County office no later than **5:00 p.m., Monday, September 22nd**. Don't miss this deadline! All forms can be found online [HERE](#).

WANT TO HELP JUDGE RECORD BOOKS?

If you are interested in helping judge record books, adult or teen leader over the age of 13, please let Madeline know! This is a great learning experience. Those who have participated in the past really enjoyed the opportunity, as well as picked up ideas and lessons learned from judging them.

Don't worry if you have never judged before, we will help you get started! This is a great opportunity to learn, volunteer, and give back!

We will judge the end of September/first week of October. Stay tuned for the exact date!



Kansas State Horticulture Judging Event



Congratulations to the Butler County 4-H Members who participated in the State Horticulture Judging Contest!

Intermediate Members

Donovan B.
Jack M.

Senior Members

Grace R.
Ellie N.

4-H Member Spotlight

Alden G.

El Dorado Trailblazers

Alden is one of the youngest recipients of the Kansas Sheep Association's 2025 Flock Starter Program grant! She's looking forward to starting her own flock of black-headed dorper hair sheep this fall.



Prepare For The New 4-H Year!

The new 4-H year will begin on October 1st, 2025! From hands-on exploration to project-based skill building, young people thrive through participation in 4-H and find their way to success in life and future careers. We are excited to offer over 35 projects, ranging from Foods and Nutrition to Robotics and Geology to Livestock. There truly is something for everyone! We focus on exploration, learning, and experiencing the world around us through hands-on activities led by our qualified volunteers and mentors. Any Butler County youth ages 7 to 18 is eligible to join 4-H! Our learning pathways support 21st-century learning skills to help our youth grow and develop into productive citizens within their community! I encourage you to visit our website at <https://www.butler.k-state.edu/4-h/> to learn how to enroll in 4-H!

4-H'ers

- Try a new project! Find a list of projects [HERE](#)
- Invite a friend to a 4-H meeting!
- Consider running for an office in your club!
- Plan a presentation for a club meeting!



Parents

- Don't forget to enroll in 4-HOnline beginning October 1st.
- Sign up to become a volunteer! Contact the Extension Office for more information.
- Verify that the family email address on file is the best for us to use to communicate with you and subscribe to emails (we won't spam you)!
- Encourage 4-H'ers in your family and club to try something new, such as a project or presentation. Getting out of our comfort zone fosters growth!
- Invite another family to a meeting or 4-H event to learn about our program!

Volunteers

- Remember: Volunteers need to re-enroll every year!
- Volunteers should not be conducting 4-H events until they are enrolled in 4HOnline.
- If you would like to become a NEW 4-H Volunteer:
 - Speak with your Community Club Leader first to find out where help is needed most!
 - Enroll in 4-HOnline as a Volunteer and submit your information for a background check (this link will be emailed to you).
- Once the Butler County Extension Board has approved your Volunteer application, you can start your 4-H Volunteer journey!

Butler County Fair Thank You's



Fair is over, and the dust has settled. The Fair takes a plethora of volunteers and support from buyers to make it successful. Have you sent your thank-you notes? Do you know who to send thank-you notes to? Here is a list of suggestions that we strongly encourage you to write a note of Thanks. Without the support of these individuals, the Fair would not be as successful as it is:

- **Food Buyers** (we will have a list available of those who purchased food). Even if you don't know who bought your food – you are encouraged to pick out 4 or 5 random names and write notes of Thanks. DID YOU KNOW – the food auction helps support scholarships for you to attend 4-H Camp and other activities?
- **Project Buyers** – You are required to get the buyer's signature on your Thank You List if you wish to participate in next year's event. How many of you went out into the crowd, found the buyer of your project, and said THANK YOU immediately following your project exiting the sale ring and/or even offered to get them a drink? Our buyers are our heart and soul of our auction. Without them, the premiums won't be there. Did you have an add-on (you will know when you pick up your Thank You List)? If so, you need to write a Thank You to them as well. If you need addresses, please contact our office – we can help you out.
- **Fair Board** – There is a lot that goes on behind the scenes getting everything ready for the Fair, A LOT: scheduling, awards, organizing set-up and clean-up, sponsors and everything in between!
- **Superintendents** – I encourage you to write a thank-you note to the Superintendents of the divisions you participated in. Volunteers are a critical aspect of the Butler County Fair.
- **The Extension Office staff and the Extension Board** – these individuals work year-round to help the 4-H'ers out.
- **Auctioneers** – Our auctioneers from Sundgren Realty Inc. Land & Real Estate Brokers do a fabulous job getting the most they can for the youth and the projects. We need to let them know our Thanks!
- **Judges** – Why not write a letter to the judge and thank them for helping out, even if you aren't happy about your placement! Without judges, we wouldn't have a Fair!
- **Project Leaders and Community Leaders** – need we say more?
- **Butler County Board of County Commissioners** – they support our program. We need to let them know just how much we appreciate their support.





ANATOMY OF A GOOD THANK YOU LETTER

Why write thank you letters?

- To give buyers recognition for their support of the program.
- To thank them for their support of your project.
- To show you care and are willing to go the extra mile.
- To make a connection even after the show ring.

Make your greeting respectful and personalized.

Dear Mr. Smith,

I would like to thank you for helping to support the Anywhere County 4-H and FFA Livestock Auction and for buying my lamb. Your support means a great deal to me personally and to the 4-H and FFA programs.

I am a junior in high school this year, and the money that I receive from your purchase will go towards purchasing a livestock project for next year, and helping to pay for college.

Once again, thank you for your support!

Sincerely,

Bob Johnson

Share a little about yourself and what their support will help with.

Thank them for their support of the program and specifically for their support of your project.

Thank them again, close with a respectful salutation and sign your first and last name.

Hand sign the letter!



Other things to remember:

- Use nice stationery or a notecard and handwrite your message.
- Use your best handwriting and proofread for spelling errors.
- Mail the thank you or hand deliver it, but be sure that it is received in a timely manner.

Butler County 4-H'ers Excel at State 4-H Contest

Butler County 4-H's Senior Livestock Judging Team traveled to Manhattan, KS, recently to participate in the Livestock Sweepstakes contest. These 4-H'ers participated in the livestock judging portion of the event. The contest consisted of placing 9 classes and giving oral reasons. Oral reasons are justifications for why they placed the class the way they did. 193 Individuals and 38 Teams from across Kansas competed.

The Butler County 4-H Livestock Judging Team started monthly practices last fall. The senior team has been meeting weekly to practice and prepare for the contest since July. Livestock producers and supporters have been critical to their success by allowing these youth to come out to their operation, view livestock, and practice judging. Senior Team members include: Cora B., Cami M., Ellie N., and Gabe O. Highlights from the contest include:



Team Results

4th Overall– Oral Reasons
4th Overall– Beef
12th Overall

Individual Results

Cami – 3rd in Swine, 4th in Oral Reasons, 13th in Beef, 10th overall, qualified to try out for the State All-Star Team
Gabe – 20th in Beef

Team members this year were coached by K-State Extension Butler County Agriculture Agent Charlene Miller and Butler Community College Livestock Judging Team member and 4-H Volunteer Cally Miller.



Want to Join the Butler County 4-H Livestock Judging Team?

If you would like more information on joining the Butler County 4-H Livestock Judging Team, contact Charlene Miller at cmmiller1@ksu.edu.

Come and have fun, make memories, learn to make decisions, learn how to place a class and mark card, learn how to give oral reasons, and Have Fun!

4-H Scholarship Opportunities

Did you know that the Butler County 4-H Council has event scholarships available to all Butler County 4-H members?!

Scholarship Requirements:

- Any current 4-H member (includes Coverbuds) is eligible to apply for a scholarship.
- 4-H'ers are limited to 2 event scholarships per 4-H year.
- Completed forms are to be submitted to the Butler County Extension Office with event payment prior to event registration deadline.



Scholarship Details:

- If you did not submit a KAP and pin application or did not receive a pin within the past year for a \$100 scholarship
- Submitted a KAP and received a pin within the past year for a \$200 scholarship. Those that have already received their 10-year pin are exempt from pin requirement.

You can find the scholarship application here:

<https://www.butler.k-state.edu/4-h/Scholarships.html>

You can find more Kansas 4-H State Event Opportunities here:

<https://www.kansas4-h.org/events-activities/index.html>

4-H Scholarship Update

E.W. Nath

4-H Foundation Scholarship

The E.W. Nath 4-H Foundation Scholarship can now be used towards trade schools, professional programs, or technical degree programs. This scholarship is no longer limited to a two- or four-year college or university.



HPAI:

Highly Pathogenic Avian Influenza

Highly pathogenic avian influenza, or HPAI, is a rapidly spreading viral disease that can infect many types of birds. Avian influenza, often called avian flu or bird flu, can be common, but some strains are highly pathogenic, which means they are more deadly. Introduced by migrating wild birds, HPAI can spread through spring migration and affect **all** domestic poultry — small and backyard flocks as well as commercial industries.

Poultry with HPAI **do not** survive the illness. Vaccines for HPAI are not readily available.

Signs of Avian Influenza

- Coughing and sneezing
- Difficulty breathing
- Extreme depression
- Lack of energy
- Decrease in feed or water intake
- Swelling or purple discoloration of head, eyelids, comb, wattle and legs
- Decrease in egg production
- Sudden unexplained death

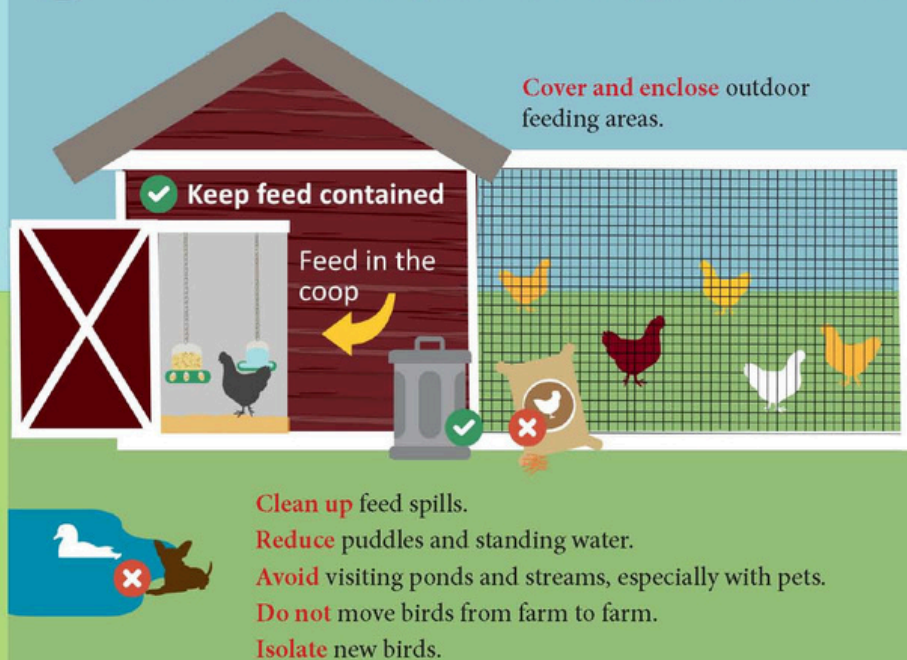
Biosecurity is your best option to prevent HPAI from entering your small or backyard poultry flock.

Here is what you can do:

Protect Your Small Flock from Avian Influenza

1

Avoid attracting wild birds and waterfowl to your home or farm. Song birds, sparrows, starlings, etc. are **low risk**.



2

Limit or **halt** travel with your birds to sales, shows and swaps.

Ensure you have clean hands, clothes, and footwear before handling your birds if you attend events. **Do not** allow others to handle your birds.



3

Limit your birds' visitors.

If someone must visit your birds: discuss where they have been. Have them wash their hands and wear clean clothes and footwear.



Call your veterinarian if your flock shows signs of influenza or you suspect exposure. No veterinarian? Call the Kansas Department of Agriculture's Division of Animal Health at 785-564-6601.



APPLY FOR
THE KANSAS
4-H YOUTH
LEADERSHIP
COUNCIL
TODAY



K-STATE
Research and Extension
Youth Leadership Council



The Kansas 4-H Youth Council and National 4-H Conference Applications are open! Any Kansas 4-H member between the ages of 14 and 18 before January 1, 2026, may apply as a Council Rep, and those 15-18 before January 1, 2026, may apply for National 4-H Conference.

Learn more here: https://kansas4h.org/educational-experiences/teen-leadership-opportunities/youth-leadership-council/?fbclid=IwY2xjawLH9M1leHRuA2FlbQIxMABicmlkETF1ZlJwRXdlVTf2UVJWeUZfAR5uf41Q-kwebxLzGr_nSG_W5xeOfntCrLowQJ-yorsuEUeOP4QAxbWI55BIUQ_aem_r7FumxMWcRycwmKfJLUwnA



The deadline will be October 1, 2025.



ACHIEVEMENT CELEBRATION

“How We Thrived in 2025”

Date/Time:

-  November 8, 2025
-  Starts at 10:00 a.m.

Address:

-  Butler Community
Building
200 N Griffith St., El Dorado

**Light
Brunch
Provided**



K-STATE

Research and Extension

Butler County

Register now via the QR code!

<https://forms.gle/JH82SuVRB262tjv87>

Training for Screened and Approved 4-H Volunteers

Developmental Relationships

Learn about the 5 key elements of positive developmental relationships and how they shape positive youth development!

Butler 4-H Community Building

Thursday, November 13th

6:00 p.m.

Snacks provided

K-State Research and Extension is committed to providing equal opportunity for participation in all programs, services and activities. Program information may be available in languages other than English. Reasonable accommodations for persons with disabilities, including alternative means for communication (e.g., Braille, large print, audio tape, and American Sign Language) may be requested by contacting the event contact Madeline Wallace four weeks prior to the start of the event (October 16, 2024) at mwallace@ksre.edu or 316-321-9660. Requests received after this date will be honored when it is feasible to do so. Language access services, such as interpretation or translation of vital information will be provided free of charge to limited English proficient individuals upon request.

Kansas State University Agricultural Experiment Station and Cooperative Extension Service

K-State Research and Extension is an equal opportunity provider and employer.

K-STATE

Research and Extension

Butler County

Open House

LEARN ABOUT OUR 4-H CLUBS,

DIFFERENT 4-H PROJECTS, AND

ATTEND THE NEW FAMILY MEETING

BUTLER COMMUNITY BUILDING

200 N GRIFFITH ST, EL DORADO

MONDAY, OCTOBER 27

BOOTHS OPEN

6:00 PM - 7:30 PM

NEW FAMILY MEETING

6:30 PM - 7:00 PM

Kansas State University Agricultural Experiment Station and Cooperative Extension Service

K-State Research and Extension is an equal opportunity provider and employer.

K-STATE

Research and Extension

Butler County

4-H Online Enrollment Opens October 1st!

4-H's Long-reaching Effects

Compared to other youth, 4-Hers are:

4x

more likely to contribute to their communities

2x

more likely to be civically active

2x

more likely to make healthier lifestyle choices

The Top 5 Project Areas in Butler County:

1. Visual Arts

2. Foods & Nutrition

3. Photography

4. Woodworking

5. Fiber Arts (Includes 9 Projects)

Find more information here:

What does Butler County 4-H have to offer?

• 9 Community 4-H Clubs across the County

• Butler County 4-H Shooting Sports

• Over 70 Projects

• Cloverbud Program for ages 5-6 yrs.

Visit Our Website

<https://www.butler.k-state.edu/4-h/>

Call Us

316-321-9660

Kansas State University Agricultural Experiment Station and Cooperative Extension Service

K-State Research and Extension is an equal opportunity provider and employer.



LUNCH & LEARN

Bring your lunch and join Horticulture Agent, Calla Edwards, over the lunch hour during our monthly Lunch & Learn Program. This will be held over the lunch hour and will cover a variety of horticulture topics.

**September 15th
12:15-12:45 p.m.**

Lori's EMPORIUM!
1604 Custer Lane
Augusta, KS

September Topic: Putting the Garden to Rest

The gardening season is winding down, but there are still a few steps to take in our lawns, gardens, and flowerbeds to help us be prepared for the spring growing season. Join Calla Edwards to get a jump start on that fall gardening to-do list.

Kansas State University Agricultural Experiment Station and Cooperative Extension Service
K-State Research and Extension is an equal opportunity provider and employer.

Join Us For Our 2025 Quarterly Extension Connection

Mug Mingle



**Grab a mug and mingle with your local
Butler County Extension Staff**

Friday, October 10th from 7:45-9:00 a.m.

K-State Research and Extension is an equal opportunity provider and employer.



LUNCH & LEARN

Bring your lunch and join Horticulture Agent, Calla Edwards, over the lunch hour during our monthly Lunch & Learn Program. This will be held over the lunch hour and will cover a variety of horticulture topics.

**September 10th
12:15-12:45 p.m.**

Andover Public Library
1511 E Central Ave
Andover, KS

September Topic: Compost Pile

Fall means cooler weather, apple cider, and, of course, dealing with all of the falling leaves. What can we do with all of these leaves? Just like anything else that is organic, they can be broken down by composting. Join Calla in learning about what else you can compost, and why everyone should build their own compost pile!

Kansas State University Agricultural Experiment Station and Cooperative Extension Service
K-State Research and Extension is an equal opportunity provider and employer.



K-STATE GARDEN HOUR

Keys to Successful Community Garden Spaces

Wednesday, October 1st 12:00PM -1:00PM CST

Community gardens are vital spaces for growing healthy food, fostering community connections, and enhancing personal well-being. Join Laura Phillips, Meadowlark District Horticulture Agent, as she explores the evolution of community gardens, common pitfalls to avoid, and offers guidance on establishing and sustaining a successful garden in your neighborhood. Bring your questions about creating a public garden space in your community!



Register Here!

Please register for this free Zoom Webinar at:
ksre-learn.com/KStateGardenHour



K-STATE GARDEN HOUR

Shrubs That Thrive in Kansas

Wednesday, September 3rd 12:00PM -1:00PM CST

Picking the right plant for the right place is crucial to have plants that will last in our challenging Kansas climate. Learn the best shrub varieties suited for the state's unique climate challenges, including heat and drought tolerance. Join Dr. Jason Griffin, Woody Ornamentals Horticulture Extension Specialist and Director of the John C. Pair Horticulture Center, as he highlights some great shrubs to incorporate into your landscape.



Register Here!

Please register for this free Zoom Webinar at:
ksre-learn.com/KStateGardenHour



Coffee Mugs Now Available!

Get yours today at the K-State Research and Extension - Butler County Office
206 North Griffith, Suite A
El Dorado, KS 67042



\$10.00 Each

K-STATE
Research and Extension

Butler County

K-State Research and Extension is an equal opportunity provider and employer.

2025 Hunter Education Course

The Hunter Education courses are open to anyone. No fee is required. No one under the age of 11 will be certified in Hunter Education. Those under age 11 may take the course with special permission from the instructor. Anyone taking the Hunter Education courses prior to age 11, will be required to take the course again for certification after turning 11. All courses are being held at the Butler County 4- H Community Building located at 200 N. Griffith in El Dorado. Call the Butler County Extension Office at 316-321-9660 to pre-enroll! Enrollment is limited, so call early! No Drop-Ins Will Be Accepted.

****Pre-enrollment is required for all courses****



Internet Assisted Course #1: September 27, 2025

Check-in: 7:30-8:00 AM

Field Day: Saturday, Sept 27th, 8:00 AM – 3:00 PM

Lunch: 11:30 AM – 12:30 PM

Pre-enroll between June 23rd – Sept 24th, 2025.



Internet Assisted Course #2: October 25th, 2025

Check-in: 7:30-8:00 AM

Field Day: Saturday, Oct 25th, 8:00 AM – 3:00 PM

Lunch: 11:30 AM - 12:30 PM

Pre-enroll between June 23rd – Oct. 21st, 2025

You will need to have access to a computer and a printer in order to complete the online portion of an Internet-Assisted course. This independent study method requires pre-registration in an Internet-assisted Field Day and Testing Session and completion of the Kansas online hunter education course. **DO NOT TAKE THE ONLINE COURSE UNTIL YOU HAVE PRE-REGISTERED FOR THE INTERNET-ASSISTED HUNTER EDUCATION FIELD DAY AND TESTING SESSION OF YOUR CHOICE.**

Pre-Enroll at Butler County Extension Office or call 316-321-9660

Field Day Instructions:

1. Pre enroll for the field day at the Butler County Extension Office
2. Go to the Kansas Wildlife, Parks & Tourism website at ksoutdoors.com
3. Follow the prompts to access the on-line test and complete it. Education - Hunter Education - Internet Assisted Course - Free Kansas Internet Assisted Course (Yellow box at the bottom of the page) - take the test.
4. After completing the test, print the completion certificate and bring it with you to the field day.

