

THE 4-H NEWSLETTER

NOVEMBER
2025

A Minute with Madeline

A Season of Gratitude in 4-H



November is the perfect time to pause and reflect on what makes our 4-H program so special—and there's *a lot* to be thankful for! I'm grateful every day for our amazing 4-H members who bring energy, creativity, and heart to everything they do. From record books to service projects, you all continue to impress me with your hard work and dedication. A big thank-you also goes out to our incredible parents and volunteers who make the magic happen behind the scenes. Your support, encouragement, and countless volunteer hours are what keep 4-H strong!

I'm also thankful for the sense of *community* that 4-H brings to Butler County. Whether it's lending a helping hand, cheering each other on at events, or sharing laughs at club meetings, you all remind me what it means to belong to something bigger than ourselves. As we celebrate this season of thankfulness, I hope each of you takes a moment to appreciate the memories made, the friendships built, and the difference you're making through 4-H.





LEADER'S LOUNGE

November Check-Up

- Recognize those that submitted Record Books and Pin Applications.
- Distribute Achievement Celebration items to those that were not able to attend
- Encourage 4-H'ers to invite their friends to attend a meeting & join 4-H!
- Ask your 4-H parents to encourage others to get involved.

Review

- Read the 4-H Newsletter and mark important dates on the calendar
- Review highlights from the 4-H Newsletter at your club meeting

Promote/Recruit

- Club participation at the Achievement Celebration November 8th
- Club participation in the Officer Training November 8th

To-Do

- Notify Project Leaders of their specific responsibilities.
- Encourage Project Leaders to conduct project meetings throughout the year.
- Check Club mailbox at the Extension Office.
- Distribute copies of club program calendar or club notebooks.
- Identify and schedule meeting with Community Service Committee.
- Plan holiday celebration.
- Begin discussion of 4-H Day plans.
- Encourage 4-H'ers to explore new project areas.
- Remind families to "Subscribe" to the 4-H Online broadcast messages. This is where all newsletters and important information is sent out to families!
- Remind volunteers and 4-H'ers to enroll/re-enroll in 4-H Online for the new 4-H year.
- Check Club's progress towards goals
- Check out the Kansas 4-H Club Resources page [HERE](#)

Remember

- Work with your co-leader!
- Remind 4-H Families & Volunteers to get enrolled for the new 4-H year!
- Make it a fun and rewarding year!

If your Club is planning to have a bake sale, fundraiser, make t-shirts, etc., please contact our office prior to doing so!



IMPORTANT DATES AND DEADLINES

November

- November 1: 4-H & IFYE Outbound Application Deadline
- November 1: Live Well, Lead Well/Engineering & Technology Workshop - Wichita
- November 8: Achievement Celebration
- November 8: Officer Training
- November 8: Live Well, Lead Well Workshop - Garden City
- November 11: Veterans' Day - Extension Office Closed
- November 13: Understanding Developmental Relationships 4-H Volunteer Training
- November 18: 4-H Council Meeting
- November 22-23: Kansas Youth Leadership Forum - Rock Springs
- November 22-23: Kansas Association of 4-H Volunteers Forum - Rock Springs
- November 27-28: Thanksgiving - Extension Office Closed
- November 28-December 2: National 4-H Congress - Atlanta, GA

December

- December 12: Christmas Donation Drive Drop Off by 11:30 a.m.
- December 25: Christmas Day - Extension Office Closed



January

- January 1: New Year's Day - Extension Office Closed
- January 5: Kansas 4-H Scholarship Applications Due
- January 9: Club Quarterly Report Due
- January 10-11: Kansas 4-H Youth Leadership Council Orientation Retreat - Rock Springs
- January 13: 4-H Council Meeting
- January 13: Shooting Sports Basic Rifle/Pistol Class - Required for all 1st Year Project Members
- January 23: State 4-H Horse Judging Contest - EquiFest, Topeka
- January TBA: YQCA Training



The Kansas Youth Leadership Forum will be November 22-23, 2025, at Rock Springs 4-H Center. The Forum is for youth ages 14-18, as of January 1, 2025. Registrations will be due on Wednesday, October 15, 2025. This event will include: speakers, workshops, consulting groups, and election of the State 4-H Council, and is a great opportunity for youth to build their leadership skills! Any Kansas 4-H member between the ages of 14 and 18 by January 1, 2025, may apply to be a council member. The duties of the Council Members include planning the next Youth Leadership Forum and other events, and may include assisting the State 4-H functions, working with 4-H public relations, and speaking at local achievement programs, forums, and other workshops or conferences. Applications for the State 4-H Youth Council will be available in the registration materials on the State 4-H website at <https://www.kansas4-h.org/educational-experiences/project-based-events/conferences-events/kansas-youth-leadership-forum/>

KANSAS YOUTH LEADERSHIP FORUM
KANSAS 4-H LEADERSHIP WEEKEND
NOVEMBER 22-23, 2025







REGISTER TODAY



K-STATE
Research and Extension



Kansas State University Agricultural Experiment Station and Cooperative Extension Service.
K-State Research and Extension is an equal opportunity provider and employer.

Prepare For The New 4-H Year!

The new 4-H year will begin on October 1st, 2025! From hands-on exploration to project-based skill building, young people thrive through participation in 4-H and find their way to success in life and future careers. We are excited to offer over 35 projects, ranging from Foods and Nutrition to Robotics and Geology to Livestock. There truly is something for everyone! We focus on exploration, learning, and experiencing the world around us through hands-on activities led by our qualified volunteers and mentors. Any Butler County youth ages 7 to 18 is eligible to join 4-H! Our learning pathways support 21st-century learning skills to help our youth grow and develop into productive citizens within their community! I encourage you to visit our website at <https://www.butler.k-state.edu/4-h/> to learn how to enroll in 4-H!

4-H'ers

- Try a new project! Find a list of projects [HERE](#)
- Invite a friend to a 4-H meeting!
- Consider running for an office in your club!
- Plan a presentation for a club meeting!



Parents

- Don't forget to enroll in 4-HOnline beginning October 1st.
- Sign up to become a volunteer! Contact the Extension Office for more information.
- Verify that the family email address on file is the best for us to use to communicate with you and subscribe to emails (we won't spam you)!
- Encourage 4-H'ers in your family and club to try something new, such as a project or presentation. Getting out of our comfort zone fosters growth!
- Invite another family to a meeting or 4-H event to learn about our program!

Volunteers

- Remember: Volunteers need to re-enroll every year!
- Volunteers should not be conducting 4-H events until they are enrolled in 4HOnline.
- If you would like to become a NEW 4-H Volunteer:
 - Speak with your Community Club Leader first to find out where help is needed most!
 - Enroll in 4-HOnline as a Volunteer and submit your information for a background check (this link will be emailed to you).
- Once the Butler County Extension Board has approved your Volunteer application, you can start your 4-H Volunteer journey!

Achievement Celebration

K-STATE
Research and Extension



Butler
County

ACHIEVEMENT CELEBRATION

“How We Thrived in 2025”

Date/Time:

 November 8, 2025

 Starts at 10:00 a.m.

Address:

 Butler Community
Building
200 N Griffith St., El Dorado

**Light
Brunch
Provided**



Officer Training

K-STATE
Research and Extension



Butler
County

OFFICER TRAINING

Join us for in-depth leadership
training workshops designed to
unlock your true potential.



SATURDAY, NOV. 8



1:00 – 4:00 P.M.



200 N GRIFFITH ST

Kansas State University Agricultural Experiment Station and Cooperative Extension Service
K-State Research and Extension is an equal opportunity provider and employer.

Volunteer Training

K-STATE
Research and Extension



Butler
County

Register now
via the QR
code!

Training for Screened and
Approved 4-H Volunteers

Developmental Relationships



Learn about the 5 key elements of positive
developmental relationships and how they
shape positive youth development!

Butler 4-H Community Building
Thursday, November 13th
6:00 p.m.
Snacks provided

K-State Research and Extension is committed to providing equal opportunity for participation in all programs, services and activities. Program information may be available in languages other than English. Reasonable accommodations for persons with disabilities, including alternative means for communication (e.g., Braille, large print, audio tape, and American Sign Language) may be requested by contacting the event contact Madeline Wallace four weeks prior to the start of the event (October 16, 2024) at mguwallac@ksu.edu or 316-321-9660. Requests received after this date will be honored when it is feasible to do so. Language access services, such as interpretation or translation of vital information will be provided free of charge to limited English proficient individuals upon request.

Kansas State University Agricultural Experiment Station and Cooperative Extension Service
K-State Research and Extension is an equal opportunity provider and employer.



Register Here: <https://forms.gle/SHzDhm4ZAJHRzbX76>



Live Well, Lead Well Workshops

SATURDAY, OCTOBER 4
GREAT BEND, KS

LIVE WELL, LEAD WELL
WORKSHOP

9:00 AM TO NOON

Register
Here



**Beyond
Ready**

Preparing our youth with

★ *Strong Minds*
★ *Helping Hands*

★ *Active Hearts*
★ *Healthy Lives*

Workshop Topics

Head

Yoga & Breathing
Modeling Dough & Activity Cards

Heart

Target Heart Rate
Line Dancing

Snack

Smoothie
Blender Bike

Hands

Conversation Rocks

Health

Re-Think Your Drink
Hands-On Activities

Who Should Register: All adults and youth (ages 7 to 18) interested in learning about healthy living choices and coping strategies through fun, hands-on activities.

Registration Fee: \$15 per attendee. (Registration fee includes workshop supplies, take home modeling dough and activity cards, conversation rocks, smoothie snack, and door prizes.) Please pay at your local Extension office by September 30th or bring your payment with you the day of the workshop.

What To Bring: Please bring your favorite drink for one of our activities.

Accommodations: Kansas State University Extension is committed to providing equal opportunity for participation in all programs, services, and activities. Accommodations for persons with disabilities may be requested with registration to this event.



K-STATE
Research and Extension





K-STATE
Research and Extension

Butler County



2025 CHRISTMAS DRIVE

winter wear & school supplies

K-State Extension – Butler County is partnering with a local school district to provide new winter clothing—coats, scarves, hats, and gloves—as well as essential school supplies to support the youth of Butler County.

ALL DONATIONS WILL BE RECEIVED UNTIL

12 DEC . 11:30 AM .

K-STATE EXTENSION - BUTLER COUNTY, 206 N. GRIFFITH, EL DORADO

Kansas State University is an equal opportunity provider and employer.



APPLY FOR
THE KANSAS
4-H YOUTH
LEADERSHIP
COUNCIL
TODAY



K-STATE
Research and Extension
Youth Leadership Council



The Kansas 4-H Youth Council and National 4-H Conference Applications are open! Any Kansas 4-H member between the ages of 14 and 18 before January 1, 2026, may apply as a Council Rep, and those 15-18 before January 1, 2026, may apply for National 4-H Conference.

Learn more here: https://kansas4h.org/educational-experiences/teen-leadership-opportunities/youth-leadership-council/?fbclid=IwY2xjawLH9M1leHRuA2FlbQIxMABicmlkETF1ZlJwRXdlVTf2UVJWeUZfAR5uf41Q-kwebxLzGr_nSG_W5xeOfntCrLowQJ-yorsuEUeOP4QAxbWI55BIUQ_aem_r7FumxMWcRycwmKfJLUwnA .

4-H Scholarship Opportunities

Did you know that the Butler County 4-H Council has event scholarships available to all Butler County 4-H members?!

Scholarship Requirements:

- Any current 4-H member (includes Coverbuds) is eligible to apply for a scholarship.
- 4-H'ers are limited to 2 event scholarships per 4-H year.
- Completed forms are to be submitted to the Butler County Extension Office with event payment prior to event registration deadline.



Scholarship Details:

- If you did not submit a KAP and pin application or did not receive a pin within the past year for a \$100 scholarship
- Submitted a KAP and received a pin within the past year for a \$200 scholarship. Those that have already received their 10-year pin are exempt from pin requirement.

You can find the scholarship application here:

<https://www.butler.k-state.edu/4-h/Scholarships.html>

You can find more Kansas 4-H State Event Opportunities here:

<https://www.kansas4-h.org/events-activities/index.html>

4-H Scholarship Update

E.W. Nath

4-H Foundation Scholarship

The E.W. Nath 4-H Foundation Scholarship can now be used towards trade schools, professional programs, or technical degree programs. This scholarship is no longer limited to a two- or four-year college or university.



Advantage Architectural Woodwork

Kansas Profile – Now That’s Rural: Bob Holloway, Advantage Architectural Woodwork

A 4-H project. An exceptional teacher. A commitment to quality. A priority on energy conservation. A transformational product. All those are elements of this story about a remarkable business in rural Kansas.

Bob Holloway is founder and owner of Advantage Architectural Woodwork. Holloway grew up west of Colby where he was active in 4-H. His grandfather enjoyed wood working, so Bob decided to try it as a 4-H project when he was 14 years old. He discovered a love of woodworking.



“I made an outdoor bench for my first project,” Holloway said. “My mom and dad still have it and still use it to this day.”

“I had a lot of support from my grandfather. We also had a really good shop teacher who would take his Sunday afternoons to help 4-H kids work on their projects.”

Holloway participated in the student drafting competition. After winning the state drafting competition at Pittsburg State University, he toured the wood technology labs there. With help from a Dane G. Hansen Foundation scholarship, he enrolled in the program.

Holloway graduated from Pittsburg State with a bachelor’s degree in Wood Technology and a minor in business. He worked at Merritt Woodwork in Cleveland, Ohio and then came back to Kansas to run a cabinet shop in Osborne. “The small town boy missed home,” Holloway said.

In 2010 he saw a woodworking magazine advertisement that sparked his interest. It advertised a Colorado workshop about innovative European window and door technology. Not only did Holloway attend that workshop, he became convinced that it could be the basis for his own woodworking business.

In 2011, he came back to his hometown of Levant, near Colby, and with his wife Shawna founded their own business called Advantage Architectural Woodwork. The business specializes in building handcrafted energy-efficient wooden European window and door systems.

“The Europeans developed these highly energy efficient window and door products,” Holloway said. Now he and his crew are building them in Kansas.

Much of this work is based on a German research institute that advanced the concept of a “passive house,” referring to a building in which design principles and building techniques result in a structure with minimal need for conventional heating and cooling systems.



Advantage Architectural Woodwork

These are highly insulated, airtight, and well-ventilated structures that produce significantly reduced heating bills, for example. High quality windows and doors from Advantage Architectural Woodwork are part of this system.

“We are manufacturing these windows and doors for people who are building high performance houses,” Holloway said.



Advantage Architectural Woodwork has produced window and door systems for customers from California to New York and as far north as Yukon territory in Canada. The construction design uses high insulation, and positions these high quality, airtight windows at angles that maximize sunlight.

“In the wintertime, our windows are essentially heating the building,” Holloway said. “There is a really big payoff (from using these systems) for buildings in colder climates.”

Customers have ranged from a Kansas farmer to the son of legendary actress Lauren Bacall.

“I enjoy seeing the construction process through from start to finish. The cherry on top is to hear feedback from customers,” Holloway said. “It’s great when we hear from customers after their first heating season that their monthly heating bills have been cents, not dollars.”

“We are building the highest performing window frames in North America, the highest performing sliding doors in North America, and the highest performing entry doors in North America.”

That’s not just his opinion. It is certified by the Passive House Institute.

These are remarkable accomplishments for a business in a rural community such as Levant, population 68 people. Now, that’s rural.

For more information, see www.advantagewoodwork.com.

How exciting to see a 4-H woodworking project turn into an internationally recognized energy conservation business. We salute Bob and Shawna Holloway and all those involved with Advantage Architectural Woodwork for making a difference with craftsmanship that conserves.

<https://www.ksre.k-state.edu/news-and-publications/news/stories/2025/10/kansas-profile-advantage-architects-levant.html>

Save the Date

2026 K-STATE JUNIOR PRODUCER DAYS



Beef
MARCH 7



K-STATE
Research and Extension



Sheep
APRIL 11



Living Well Wednesday Fall 2025 Series

September 17

One Pill Can Kill: Opioid Crisis in Our Communities

October 15

Scam Smarts: Staying Safe in a Scamming World

November 19

The Buzz on Energy Drinks: Unpacking the Truth

All sessions start at 12:10pm CST.
Sessions will be recorded for later viewing.
Sign up at bit.ly/41E7kqJ

LIVING WELL
WEDNESDAY
K-State Research and Extension Webinar Series

K-STATE
Research and Extension | Family and Consumer
Sciences

K-STATE
Research and Extension



Butler
County

4-H Online Enrollment Opens October 1st!

4-H's Long-reaching Effects

Compared to other youth, 4-Hers are:

4x more likely to contribute
to their communities

4-H

2x more likely to be
civically active

2x more likely to make
healthier lifestyle choices



The Top 5 Project Areas in Butler County:

1. Visual Arts
2. Foods & Nutrition
3. Photography
4. Woodworking
5. Fiber Arts (Includes
9 Projects)

Find more information here:



What does Butler County 4-H have to offer?

- 9 Community 4-H
Clubs across the County
- Butler County 4-H
Shooting Sports
- Over 70 Projects
- Cloverbud Program for
ages 5-6 yrs.

Visit Our Website
<https://www.butler.k-state.edu/4-h/>

Call Us
316-321-9660

Kansas State University Agricultural Experiment Station and Cooperative Extension Service K-State Research
and Extension is an equal opportunity provider and employer.

BEGINNING RANCHER SERIES

November 18th, 2025

December 9th, 2025

Light Dinner Served at 6:00 p.m.
Program 6:30-8:30 p.m.



November 18th

Guest Speaker: Jason Warner,
K-State Extension Cow-Calf Specialist
Topic: Body Condition Scoring &
Vaccine Storage



December 9th

Guest Speaker: Jaymelynn Farney,
K-State Beef Systems Extension Specialist
Topic: Land Use, Stocking Rate, &
Plant Identification



Butler County Community/4-H Building
200 N. Griffith
El Dorado, KS



Register
Today!

<https://forms.gle/2D18uAjC2iwfGLke6>



This institution is committed to providing equal opportunity for participation in all programs, services, and activities. Program information may be available in languages other than English. Language access requests and reasonable accommodations for persons with disabilities, including alternative means of communication (e.g., Braille, large print, and American Sign Language), may be requested by contacting the event contact Charlene Miller four weeks prior to the start of the event at 316-325-9692 or cmiller1@ksu.edu. Requests received after this date will be honored when it is feasible to do so. Language access services, such as interpretation or translation of vital information, will be provided free of charge to limited English proficient individuals upon request. Kansas State University is an equal opportunity provider and employer.

Coffee Mugs Now Available!

Get yours today at the K-State Research and
Extension - Butler County Office
206 North Griffith, Suite A
El Dorado, KS 67042



\$10.00 Each

K-STATE
Research and Extension

Butler County

K-State Research and Extension is an equal opportunity provider and employer.



#KSTATEGARDENHOUR

K-STATE GARDEN HOUR

Climate Resilient Gardens

Wednesday, November 5th 12:00PM -1:00PM CST

Gardening in a changing climate can be a challenge. Join Pam Paulsen, Reno County Horticulture Agent, to explore practical methods to grow gardens that are resilient to tough growing conditions. Some of these methods include native and adapted plants, soil improvement, efficient use of water and nutrients, and attracting beneficial insects.



Register Here!

Please register for this free Zoom Webinar at:
ksre-learn.com/KStateGardenHour





LUNCH & LEARN

Bring your lunch and join Horticulture Agent, Calla Edwards, over the lunch hour during our monthly Lunch & Learn Program. This will be held over the lunch hour and will cover a variety of horticulture topics.

November 12th
12:15-12:45 p.m.

Andover Public Library
1511 E Central Ave
Andover, KS

November Topic:
Houseplants-Basics and Beyond

Over 66% of U.S. households have at least one houseplant, but often the terms used to describe their care can be confusing. Decode common houseplant terms related to light, water, and other plant needs. Learn about some unique houseplants and the best practices to keep them thriving.

Kansas State University Agricultural Experiment Station and Cooperative Extension Service
K-State Research and Extension is an equal opportunity provider and employer.



LUNCH & LEARN

Bring your lunch and join Horticulture Agent, Calla Edwards, over the lunch hour during our monthly Lunch & Learn Program. This will be held over the lunch hour and will cover a variety of horticulture topics.

November 17th
12:15-12:45 p.m.

Lori's EMPORIYum!
1604 Custer Lane
Augusta, KS

November Topic:
Companion Planting

Many gardeners have heard that marigolds repel pests in vegetable gardens, or that beans dislike fennel. These sentiments are often attributed to a practice called "companion planting." But does companion planting really work? Join horticulture agent Calla Edwards for a discussion on the research behind companion planting as we dispel common myths and talk about what benefits companion planting can offer your garden.

Kansas State University Agricultural Experiment Station and Cooperative Extension Service
K-State Research and Extension is an equal opportunity provider and employer.

HPAI:

Highly Pathogenic Avian Influenza

Highly pathogenic avian influenza, or HPAI, is a rapidly spreading viral disease that can infect many types of birds. Avian influenza, often called avian flu or bird flu, can be common, but some strains are highly pathogenic, which means they are more deadly. Introduced by migrating wild birds, HPAI can spread through spring migration and affect **all** domestic poultry — small and backyard flocks as well as commercial industries.

Poultry with HPAI **do not** survive the illness. Vaccines for HPAI are not readily available.

Signs of Avian Influenza

- Coughing and sneezing
- Difficulty breathing
- Extreme depression
- Lack of energy
- Decrease in feed or water intake
- Swelling or purple discoloration of head, eyelids, comb, wattle and legs
- Decrease in egg production
- Sudden unexplained death

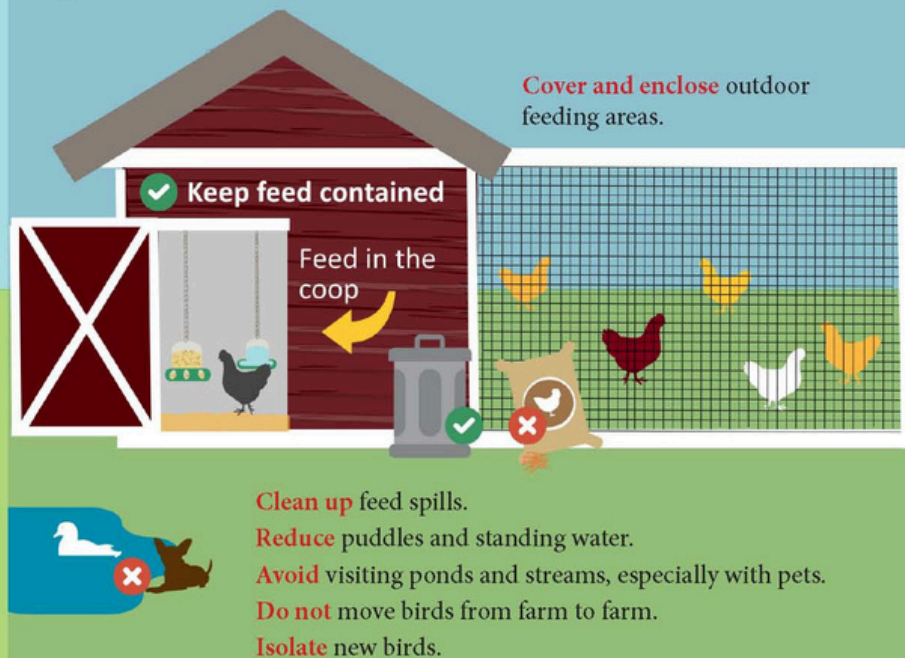
Biosecurity is your best option to prevent HPAI from entering your small or backyard poultry flock.

Here is what you can do:

Protect Your Small Flock from Avian Influenza

1

Avoid attracting wild birds and waterfowl to your home or farm. Song birds, sparrows, starlings, etc. are **low risk**.



2

Limit or **halt** travel with your birds to sales, shows and swaps.

Ensure you have clean hands, clothes, and footwear before handling your birds if you attend events. **Do not** allow others to handle your birds.



3

Limit your birds' visitors.

If someone must visit your birds: discuss where they have been. Have them wash their hands and wear clean clothes and footwear.



Call your veterinarian if your flock shows signs of influenza or you suspect exposure. No veterinarian? Call the Kansas Department of Agriculture's Division of Animal Health at 785-564-6601.