

THE 4-H NEWSLETTER

JUNE
2025

A Minute with Madeline



Get Ready for the Butler County Fair! Fair Preparation Tips for 4-H Members

Summer is here, and that means one thing—Fair season is right around the corner! The Butler County Fair is a time to showcase your hard work, meet friends, and take pride in your 4-H projects. Whether you're entering livestock, photography, clothing, or STEM exhibits, preparation is key to making the most of your fair experience. Here are some helpful tips to get ready:



Know the Deadlines

Stay organized by marking all fair-related deadlines on your calendar. That includes:

- Pre-entry deadline: Monday, June 23 at 11:59 p.m.
- Livestock form deadlines
- YQCA certification for livestock

Check the Butler County 4-H Fair Book and Extension Office emails for the most current information.



A Minute with Madeline Cont.

Livestock Exhibitors

- Double-check your ear tags, tattoos, or registration papers for accuracy.
- Practice showmanship regularly—both with your animal and handling questions.
- Make a fair checklist with grooming supplies, feed, buckets, halters, fans, and bedding.
- Ensure your animal is used to noise and crowds to reduce stress on show day.

Static Project Tips

- Finish projects early so you have time for final touch-ups.
- Review judging criteria in the fair book to ensure your display meets size or labeling requirements.
- Practice explaining your project as if you're talking to the judge—what did you learn?

Fair Etiquette & Safety

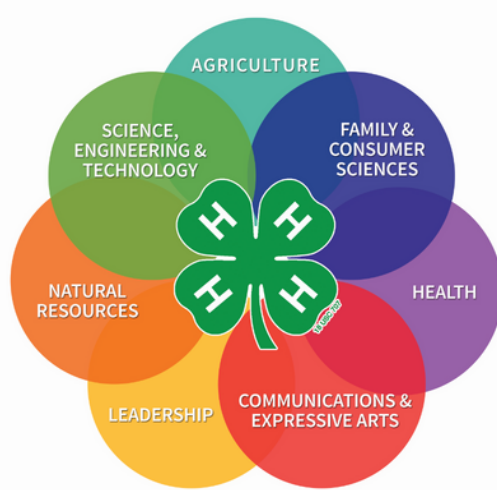
- Be respectful and courteous to judges, staff, and fellow 4-H members.
- Keep your stall or exhibit area tidy and your project well cared for.
- Drink water, wear sunscreen, and take breaks—it can get hot!
- Ask for help if you're unsure—it's a great chance to learn.
- For your safety and comfort, please wear appropriate clothing and closed-toe shoes.

Final Reminders

- Pack early, not the night before!
- Label your belongings.
- Have a backup plan in case of weather changes or emergencies.
- Most importantly, have fun and be proud of what you've accomplished!

We can't wait to see Butler County 4-H members shine at this year's fair. Your dedication and passion make the event a true celebration of youth development. See you at the fairgrounds!





LEADER'S LOUNGE

June Check-Up

- Encourage 4-H'ers to invite their friends to attend a meeting & join 4-H!
- Ask your 4-H parents to encourage others to get involved.

Review

- Read the 4-H Newsletter and mark important dates on the calendar
- Review highlights from the 4-H Newsletter at your club meeting
- 4-H/FFA Division Rules for the Butler County Fair (available [HERE](#))

Promote/Recruit

- YQCA for all 4-H'ers enrolled in animal projects due by May 29th
- Coggins now required for Horse Project
- 4-H Camp at Rock Springs 4-H Camp

If your Club is planning to have a bake sale, fundraiser, make t-shirts, etc., please contact our office prior to doing so!

To-Do

- Help 4-H'ers plan and prepare projects for the fair
- Check in with Project Leaders to ensure they are on task and holding meetings
- Check club mailbox at the Extension Office
- Check club's progress toward goals
- Speak with your club about doing a booth at Sunday Fun Day during the fair
- Remind 4-H'ers of the 2 Meeting Requirement for the Butler County Fair (by July 14th)
- Remind families to "Subscribe" to the 4-H Online broadcast messages. This is where all newsletters and important information is sent out to families!
- Check out the Kansas 4-H Club Resources page [HERE](#)

Remember

- Work with your co-leader!
- Make it a fun and rewarding year!
- Breeding Animals tagging deadline June 16th
- Pre-Entries for the Butler County Fair open on June 1st (**ALL** projects require pre-entry)
- Pre-Entries CLOSE June 23rd at 11:59 p.m.



IMPORTANT DATES AND DEADLINES

June

- June 1: Pre-Entries open for the Butler County Fair (ALL projects require pre-entry)
- June/July: 4-H Camp Sessions, Rock Springs
- June 3: South East Region Livestock Judging Day
- June 4-6: Discovery Days, Manhattan
- June 5: Last Day to Order Small Livestock DNA Envelopes for Nominations
- June 10: 4-H Council Meeting
- June 11-14: K-State Animal Science Leadership Academy
- June 12: South East Region Challenge Day
- June 13-15: State 4-H Geology Field Trip
- June 15: Commercial Heifer, Swine, Sheep, & Meat Goat State Nominations Due Online & DNA Postmarked
- June 15: Animal Registration Papers in Exhibitor's Name
- June 15: YQCA Deadline for the Kansas State Fair and the Kansas Junior Livestock Show
- June 16: Breeding Animal Tagging Deadline
- June 16: Dairy Cattle ID Paperwork Deadline
- June 16: Butler County Fair King/Queen Application Deadline
- June 16: Special Champion Goat Show Coach/Exhibitor Application Deadline
- June 17: 4-H Ambassador Day Camp
- June 22-27: 25th National 4-H Shooting Sports Championships - Grand Island, NE
- June 23: Pre-Entry Deadline for the Butler County Fair
- June 27-28: Insect Spectacular - El Dorado
- June 27: Butler County Children's Mental Health Day - El Dorado

July

- July 4: 4th of July - Extension Office Closed
- July 7: Superintendent Meeting
- July 11: Butler County Fair Fashion Revue
- July 11: Crowning of Butler County Fair King/Queen
- July 11: Extension Mug Mingle
- July 11: Club Quarterly Report Due
- July 13: Butler County Fair Horse Show
- July 14: Butler County Fair Auction Meeting Requirement Deadline
- July 14-23: Extension Office Hours 8 a.m.-5 p.m.
- July 17-22: Butler County Fair
- July 20: Kids Pedal Tractor Pull
- July 20: Special Champions Goat Show
- July 21-August 6: State Fair Entries Accepted at the Extension Office
- July 24-25: Extension Office Closed

August

- August 6: Kansas State Fair Entry Due to the Extension Office
- August 7: State 4-H Wheat Expo - South Hutchinson, KS
- August 16: State 4-H Horticulture Judging Contest - Manhattan, KS
- August 23-24: 4-H Livestock Sweepstakes - Manhattan, KS (Tentative)

See the full 2024-2025 Calendar [HERE](#)

Butler County Fair Dates and Deadlines

Strive to Thrive in 2025

The 2025 Butler County Fair dates have been set for July 17th-22nd, 2025!

Butler County Fair Rules

The 2025 4-H/FFA Division Rules are now available and posted! They can be found on our website at:

<https://www.butler.k-state.edu/4hfair/>

Pre-Entries

- Pre-Entries are required for all 4-H/FFA projects
- Cloverbuds will only need to pre-enter if participating in Fashion Revue
- Butler County will be using FairEntry once again this year for pre-entries
- Make sure you receive your confirmation e-mail!

Butler County Fair Schedule

The 2025 Butler County Fair schedule is now available and posted! It can be found on our website at:

<https://www.butler.k-state.edu/4hfair/>

Important Dates

- **June 1:** Pre-Entries Open
- **June 15:** Livestock Registration Paper Deadline*
- **June 16:** Dairy Heifers/Cow ID Deadline*
- **June 16:** Breeding Animal Tagging Deadline*
- **June 16:** Application Deadline for Fair King/Queen
- **June 16:** Application Deadline to be a Coach for the Special Champions Goat Show
- **June 23:** Pre-Entries Close at 11:59 p.m.
- **July 1:** Dairy Doe Registration/Ownership Deadline*
- **July 14:** 4-H Meeting Requirement Deadline for Project Auction

*See the 2025 Butler County Fair 4-H/FFA Tagging Guidelines and Forms Table [HERE](#)



TO: Butler County 4-H & FFA Families

FROM: Madeline Wallace, CEA, 4-H & Youth Development, & Anna McLaughlin, Office Professional
Miranda Depenbusch & Luke Guynn, Bluestem FFA Advisors, Karlea Clark, Flinthills FFA Advisor

DATE: May 19th, 2025

RE: 2025 Butler County Fair Pre-Entry Procedures for ALL PROJECTS

Dear 4-H & FFA Families,

Let's get excited for the 2025 Butler County Fair ... **but FIRST** ... PRE-ENTRIES!
Here is what you need to know – **please read carefully!**

- **ALL projects will require online pre-entry; pre-entries are due by 11:59 p.m. on June 23rd.** The pre-entry website will close at midnight. **NO LATE ENTRIES WILL BE ACCEPTED!**
 - Pre-entries will be done at <https://butlerks4h.fairentry.com/>
 - 4-H Members – **SIGN IN** with your 4-H Online Account
 - FFA Members must create a new account separate from 4-H Online
 - If your 4-H'er is not enrolled in a project, you will not be able to enter it in the Fair
 - All forms, information, and help videos can be found at <https://www.butler.k-state.edu/4hfair/Fair%20Forms.html>
 - Make sure you make an entry for **EVERY** project!
- **It is your responsibility to check the 4-H/FFA Fair division rules for guidance, make sure your 4-H'er is enrolled in the right projects, and has completed any and all necessary forms and training by their respective due dates.**
 - To double-check your 4-H'ers enrollment, log into 4-H Online and look at their projects. Project enrollment to participate in the Butler County Fair was due by May 1st.
 - The 4-H fair division rules are online at: <https://www.butler.k-state.edu/4hfair/>
- **Livestock Exhibitors** – If you tagged an animal, you will be required to enter their tag number and upload registration papers if registered.
 - If you family nominated –Enter all animals between the 4-H'ers/FFA Members as necessary. **Each 4-H'er /FFA Member who plans to exhibit at the fair must have at least one animal entered under their name.** For example, if you nominated 4 head, you will only make 4 entries between your 4-H'ers. We can move the animal to your appropriate child at check-in if necessary. **DO NOT make double entries for each animal – you can only enter 2 breeding and 2 market animals per division, per exhibitor.**
 - If you have dual-nominated animals, you will be required to declare if they are breeding or market at this point.
- **Public Speaking and Fashion Revue/Clothing Construction-** You must pre-enter online, but following the pre-entry deadline, everyone who entered will receive an email with their scheduled times.
- **Fashion Revue** participants, you will receive an email following pre-entry to complete your script.
- **Entry Cards for Static Exhibits** – All entry cards will be printed off for 4-H/FFA divisions from the pre-entries. **Cards will be available for pick-up at our Extension Office beginning July 7th. Any cards not picked up prior to the Fair will be available in the Extension Office and must be picked up prior to your judging event!**
- **Cloverbuds** – Can participate in Fashion Revue and Show and Share. Refer to the Fairbook for additional info.

If you have any questions regarding pre-entry in the 4-H/FFA Divisions, please direct your questions to the Butler County Extension Office or your respective FFA Advisors. Our Extension Office phone number is 316-321-9660. If you need computer access to do the online entries, please call the office to schedule a time to come by (M-Th, 7:30 a.m.- 5 p.m. & Fri 7:30-11:30 a.m.). We are happy to help you!

9 Tips for Butler County Fair 4-H/FFA Pre-Entries



1. Don't Forget to Click "Submit"!

When you have finished your pre-entries, make sure that you select "Submit". You will receive a confirmation email once entries have been submitted. **If you didn't get an email, you are not entered!**

4-H
Members
Enter HERE

2. Log In With Your 4-H Online Account!

Log In through the 4-H Online option. You will use your 4-H Online username and password. Believe us when we say this will make pre-entries much easier!

3. Do NOT Create a New Account!

"Create a New Account" is ONLY for FFA Members. 4-H Members need to pre-enter through their 4-H Online Account.

4. Do NOT Duplicate Entries!

Not sure if you will be bringing a color photo or black and white photo? Just choose one to pre-enter into (i.e. black and white **or** color photo class). **Class changes can be made at the time of fair, not division changes!**

5. Showmanship is a Separate Pre-Entry!

If you want to do showmanship, you must pre-enter! We cannot add showmanship after pre-entries close.

6. Registration Papers MUST Be Uploaded!

All registration papers MUST be uploaded at the time of pre-entry. This will help us move things along quicker at check-in!

7. Only ONE Pre-Entry for Club Banners!

Dedicate someone in your Club to pre-enter your banner. We do not need 5 pre-entries for the same banner!

8. Pre-Enter for EACH Project!

If you *might* bring 5 photographs, pre-enter 5 photographs. You can drop extra entries at check-in, but you cannot add more!

9. Some Static Projects Will Need to Select a Judging Timeslot!

The following static projects will be prompted to select a judging timeslot: Foods, Fiber Arts, Geology & Lapidary, Entomology, Photography, Leathercraft & Jewelry, & Visual Arts. Please make sure you know when your judging time is!



K-STATE
Research and Extension



Butler
County



K-State Research and Extension is an equal opportunity provider and employer.

K-STATE
Research and Extension



Butler
County



Fair Photography Team



Apply Today via the QR Code

8 Team Members

5 Years in Photo.
Project Required

Work in Shifts to
Capture Fair Events

Great Experience for
your Recordbook

Build your
Photography Portfolio

Capture Memorable
Moments

Applications are due by
Monday, June 16, 2025
at 5:00 p.m.



https://docs.google.com/forms/d/e/1FAIpQLSdqggBlxj2_xCkZjyqOZ7Ap4zVLTqNfyOvxdCXQT8SWB_OGRw/viewform?usp=header

K-State Research and Extension is committed to providing equal opportunity for participation in all programs, services and activities. Program information may be available in languages other than English. Reasonable accommodations for persons with disabilities, including alternative means for communication (e.g., Braille, large print, audio tape, and American Sign Language) may be requested by contacting the event contact Madeline Wallace four weeks prior to the start of the event (June 13, 2025) at mgwallac@ksu.edu or 316-321-9660. Requests received after this date will be honored when it is feasible to do so. Language access services, such as interpretation or translation of vital information will be provided free of charge to limited English proficient individuals upon request.

Kansas State University Agricultural Experiment Station and Cooperative Extension Service

K-State Research and Extension is an equal opportunity provider and employer.

Butler County Fair Board President Update

With fair time quickly approaching, I'd like to share the new events planned for this year's Fair: Fair King & Queen Contest, Special Champions Goat Show, and Kids Tractor Pedal Pull.

The Fair King & Queen contest highlights the outstanding youth of our county, promotes youth development organizations involved with the fair, and supports the Butler County Fair. Contestants develop valuable life skills such as public speaking, interviewing, and building confidence through the contest process. The crowned King and Queen and their attendants will represent the fair at various events, parades, and venues. The crowning will take place July 11, 2025, at the 4-H Fashion Revue. Sign up here: <https://www.butler.k-state.edu/4hfair/Fair%20Forms.html>

The Special Champions Goat Show enables 4-H/FFA meat goat exhibitors to coach individuals with Intellectual and/or Developmental Disabilities (I/DD) on preparing for and exhibiting at the Butler County Fair. This event is open to I/DD individuals aged 14 and older, who will exhibit a goat with the assistance of 4-H/FFA exhibitors on Sunday, July 20th @ 6pm. Entries are due by 5pm on Monday, June 16th, 2025. Sign up now...

Participants: <https://forms.gle/Bgg6HMGBCupQsyLq>
4-H/FFA Coach: <https://forms.gle/qRpsR6wiH5TRUUMW6>



Calling all kids ages 4-12, weighing 30-90lbs, you are invited to test your leg strength and endurance at the Kids' Pedal Tractor Pull during the Butler County Fair on Sunday, July 20. Each child will pedal a tractor and drag a weighted sled as far as they can. The friction created by the sled makes it harder to pull the farther they go. This Kansas sanctioned event will qualify the top 3 places from each age division to compete at the Kansas State Fair. Registration begins at 1:30pm, and the pull starts at 2pm.

Visit <https://www.butler.k-state.edu/4hfair/> for a complete listing of all Fair events

~ Erin

**Fair King & Queen Application
Now Available**

Check it out!

Butler County Fair Forms and Information

- Pre-Entry
 - Pre-Entry Letter 2025 - Coming Soon
 - Pre-Entry Tie Sheet
 - Fair Entry Website Link
- Fair Entry Help Videos
 - Completing a Fair Entry
 - Entering an Animal Exhibit at The Fair
 - Entering a Static Exhibit at The Fair
- 2025 Camper Registration Form and Rules - Coming Soon
- 2025 Butler County Fair King and Queen Contest Application Packet

Applications Due June 16th

<https://www.butler.k-state.edu/4hfair/Fair%20Forms.html>



BUTLER COUNTY FAIR EVENTS

BUTLER COUNTY FAIR

KIDS PEDAL PULL



Sunday July 20th



REGISTRATION AT 130PM



PULL STARTS AT 2PM



AGES 4-12 WITH WEIGHT CLASSES
RANGING FROM 30-90 LBS



KANSAS STATE SANCITIONED PULL



TOP 3 PLACES IN EACH AGE DIVISION WILL GO
ON TO THE KANSAS STATE FAIR IN SEPTEMBER!



”

SPECIAL CHAMPIONS *Goat Show*

SUNDAY, JULY 20TH

- Show open to participants ages 14 and older with I/DD
- Participants will be paired with a 4-H/FFA goat exhibitor
- Entries are due by June 16
- More Information Coming Soon!!

Butler County Fair
EL Dorado, KS





K-STATE
Research and Extension



Butler
County

YOU ARE INVITED TO
BLOOM
INTO 4-H

June 17 | 1-5 p.m.
WITH THE BUTLER COUNTY
4-H AMBASSADORS

- *Free Day Camp for ages 5-9 years old
- *Limited to the first 20 registrations
- *Fun day of games and crafts
- *Light snack will be provided

Butler County Community/4-H Building
200 N. Griffith
El Dorado, KS

Register Here:

<https://forms.gle/29S3etsUCGrHBukY6>



K-State Research and Extension is committed to providing equal opportunity for participation in all programs, services and activities. Program information may be available in languages other than English. Language access requests and reasonable accommodations for persons with disabilities, including alternative means for communication (e.g., Braille, large print, audio tape, and American Sign Language), may be requested by contacting the event contact Madeline Wallace four weeks prior to the start of the event May 20th at 316-321-9660 or mgwallac@ksu.edu. Requests received after this date will be honored when it is feasible to do so. Language access services, such as interpretation or translation of vital information will be provided free of charge to limited English proficient individuals upon request. Kansas State University Agricultural Experiment Station and Cooperative Extension Service
K-State Research and Extension is an equal opportunity provider and employer.



RECORDBOOK WORKSHOP



**BUTLER
COUNTY
4-H
BUILDING**



**MAY 27TH
AUGUST 27TH**



**6:00 P.M. -
7:30 P.M.**

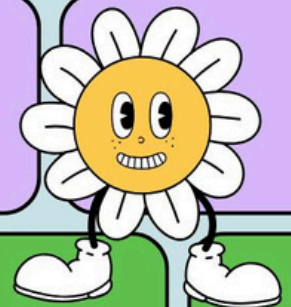
**PICK THE DATE THAT
WORKS FOR YOU!**



REGISTER VIA THE QR CODE

<https://forms.gle/QrjcmHTKqUWWj6Ym9>

**UNDERSTANDING THE
RUBRIC**



**WHAT EVALUATORS ARE
LOOKING FOR**



**GET FEEDBACK FROM THE
AGENT ON YOUR BOOK**

K-State Research and Extension is committed to providing equal opportunity for participation in all programs, services and activities. Program information may be available in languages other than English. Reasonable accommodations for persons with disabilities, including alternative means for communication (e.g., Braille, large print, audio tape, and American Sign Language) may be requested by contacting the event contact Madeline Wallace four weeks prior to the start of the event (April 29 and June 30, 2025) at mgwallac@ksu.edu or 316-321-9660. Requests received after this date will be honored when it is feasible to do so. Language access services, such as interpretation or translation of vital information will be provided free of charge to limited English proficient individuals upon request.

Kansas State Youth Livestock Nomination Process



2025 Updates



Use Existing ShoWorks Exhibitor Accounts for Nominations

State Livestock Nominations transitioned to an online system in 2022. Exhibitors who state nominated a market animal or commercial breeding female last year need to use their existing ShoWorks account this year. Do NOT create a new account, unless you truly are a family nominating for the very first time or adding a brand new exhibitor to the family. For help accessing an account, you may use the password reset option or contact the [Youth Livestock Program!](#) for assistance. Exhibitors will verify their contact information in ShoWorks from last year, update their age and 2025 YQCA #, then continue through the system.

Remember – all exhibitors who plan to show need their own ShoWorks exhibitor account. Animals must be nominated under each child a family would like to be eligible to enter and exhibit. It is highly encouraged to submit all animals under all kids. Families who have two (2) kids and three (3) animals should enter all three (3) animals under each child's ShoWorks account during nomination. Then, either child may enter and exhibit the animal at a state show.

Order Official DNA Envelopes in Advance

Families will need to purchase official DNA envelopes online through ShoWorks, for each animal in which they plan to nominate. Envelopes that were purchased in 2022 – 2024 are still valid. Old DNA envelopes (2021 and before) will NOT be accepted. The new envelopes include all of the information necessary to enter each animal into the system, as well as provide a place for the barcode sticker, which families need to request from their local extension office. The deadline to order DNA envelopes is **10 days prior** to the nomination deadline: **Market Beef – April 20; Small Livestock & Commercial Heifers – June 5**. There is also an option for expedited shipping. Orders will continue to be filled a few days after the DNA envelope order deadline, but families must pay the \$50 expedited shipping fee to have them overnighted. This is in addition to the cost of each DNA envelope.

4-H County and FFA Chapters Available Under Club Drop-down List

Each exhibitor must select the “CLUB” in which they participate and intend to show. For 4-H members, this is their local county. All FFA Chapters have also been added to the system under the county in which they are located. For example, Dickinson county 4-H'ers will select “Dickinson” as their “Club” in the system. An Abilene FFA member will find their chapter under “Dickinson – Abilene FFA”. It is vitally important families select the appropriate “Club”.

Use Checkbox Under Market Division for Dual Nominated Females

Exhibitors will continue to have the option to dual nominate gilts, ewes, and does by using a sliding checkbox, under the market division for each specie, rather than entering the information twice (once under both the market and commercial breeding division). Dual nomination means the animal is nominated both in the market division and in the commercial breeding division. Therefore, they are eligible to be entered by an exhibitor and shown in either division for the Grand Drive and/or KJLS. The decision will be made during show entry. Families who wish to take advantage of this option will need to nominate all of their gilts, ewes, and does under the market division, and then move the “Dual Nom (Mkt & Com)” slider button to the blue “YES” on the bottom of the page.

Kansas State Fair Grand Drive Rule Changes

Continuing this year, all market beef with Maine-Anjou papers will show together in one division – All Maine Breeds. Shorthorn Plus has also been added to the market beef show. The swine show will now include dark and light divisions for both market and commercial breeding. Refer to the 2025 [Grand Drive](#) rules for more information.

KJLS Rule Changes

Limousin steers will show in the AOB division, but families may continue selecting that specific breed in the nomination system. For swine, the birthdate for gilts has been moved to January 1 of the current show year and they will show by weight. The maximum weight for gilts will be 350 pounds, with a 15- pound weigh back. The max number of animals that may be entered for all species is four (4). However, entered animals may be any combination of market and breeding, as long as the number entered per exhibitor does not exceed four (4) total animals. There will be some changes in the KJLS schedule as well. Refer to the 2025 [KJLS](#) rules and schedule for additional details.

Club News

Dog Project

Dog Project Meeting on May 15. The youth, led by Project Leader Kristin Cloud, have worked on skills like obedience and agility over the past few months. Each member and their canine companion have grown immensely in their skills!



4-H Scholarship Update

E.W. Nath

4-H Foundation Scholarship

The E.W. Nath 4-H Foundation Scholarship can now be used towards trade schools, professional programs, or technical degree programs. This scholarship is no longer limited to a two- or four-year college or university.

<https://www.butler.k-state.edu/4-h/Scholarships.html>

2025 Butler County Fair

Updates to 4-H/FFA Divisions

1.

Updated grievance policy and form

2.

Purple ribbons added for livestock

3.

Updated Horse classes

4.

Youth must be present for livestock and static judging

5.

Expanded STEM guidelines

6.

Kits allowed in Visual Arts – county only competition

7.

Registered market livestock breed classes

8.

Disqualification for use of Fractal Woodburning

9.

Negative Equine Infectious Anemia (Coggins) test required for Horses

K-STATE
Research and Extension



Butler
County

Kansas State University Agricultural Experiment Station and Cooperative Extension Service
K-State Research and Extension is an equal opportunity provider and employer.

2025 Horse Project

The Kansas 4-H Horse ID Certificate (P1039) has been updated for the 2025 4-H program year. Beginning with the 2025 4-H program year, please use the new form and destroy previously used 4-H Horse ID Certificates. As a reminder, to properly identify your horse, complete the 4-H Horse ID Certificate, have your Extension Agent sign it and copy it. A COPY of the Horse ID Certificate is kept on file in the Extension Office and the 4-H Horse member maintains the ORIGINAL certificate. The original certificate is presented by the 4-H member to show staff for check-in at the local 4-H horse shows. **Beginning in 2025, registration papers WILL NOT be accepted to identify horses for the 4-H Horse project.** An example of the Horse ID Certificate is available online.



Additionally, the 4-H Horse Show Rulebook (S133) has been revised and is now available. Supplemental educational materials will also be released throughout the year to assist 4-H members, leaders and Extension staff with the 4-H Horse program.



Butler County 4-H Shooting Sports



Small Bore Rifle and Pistol practice will begin

Tuesday, June 3, 2025 at 6:00 p.m.

Practice will be held at Angela Cerney's home

Shotgun practice will begin

Saturday, June 14, 2025 at 8:30 a.m.

Archery practice will begin outdoor practices

Monday, June 2, 2025 at 6:30 p.m.

Shotgun & Archery practice will be held at
Michael Murphy & Sons
6400 SW Hunter Rd
Augusta, KS 67010

All Shooting Sports Members must have the following completed in order to be eligible to participate:

1. Be enrolled in the Shooting Sports Project in 4-H Online
2. Have a signed copy of the Shooting Sports Waiver turned into the Extension Office
3. \$20 Shooting Sports Project Fee paid at the Extension Office

Coggins Now Required for Horse Project

See reverse for more OMB information

U.S. DEPARTMENT OF AGRICULTURE
ANIMAL AND PLANT HEALTH INSPECTION SERVICE
EQUINE INFECTIOUS ANEMIA LABORATORY TEST
(10-11 November 2009)

FORM APPROVED - OMB NUMBER 0575-0127

SERIAL NO. B

1. ACCESSION NUMBER 2. DATE BLOOD DRAWN

Forms Without Adequate Descriptions Of The Horse and Complete Addresses Including Zip Codes, Counties, and Telephone Numbers Will Not Be Processed.

3. REASON FOR TESTING: ☐ Market ☐ Change of Ownership ☐ Show ☐ First Test ☐ Retest ☐ Export

4. GEOGRAPHIC INFORMATION: ☐ AKSD ☐ ELISA

5. VETERINARY LICENSE OR ACCESSION NO.

6. TEST TYPE

7. NAME AND ADDRESS OR STABLE/MARKET (Please print or type)

8. NAME AND ADDRESS OF OWNER (Please print or type)

9. NAME AND ADDRESS OF VETERINARIAN (Please print or type)

10. SIGNATURE OF FEDERALLY ACCREDITED VETERINARIAN

11. TYPE OR PRINT NAME OF OWNER

12. SIGNATURE DATE

13. SIGNATURE OF OWNER OR OWNER'S AGENT

14. SIGNATURE DATE

15. HEAD

16. LEFT FORELEMB

17. RIGHT FORELEMB

18. LEFT HINDLEMB

19. RIGHT HINDLEMB

20. LABORATORY NAME/CITY/STATE

21. DATE RECEIVED

22. DATE REPORTED OUT

23. TEST RESULTS: ☐ Negative ☐ Positive ☐ AGSD ☐ ELISA

24. REMARKS

Falsification of this form or knowingly using a falsified form is a criminal offense and may result in a fine of not more than \$10,000 or imprisonment for not more than 5 years or both (K.S.C. Section 1901).

VS FORM 10-11 (MAY 2009) (Replaces the VS 10-11 (4-90) and VS 10-11 (10-97), which may be used.)

The Kansas Department of Animal Health released an update to Kansas Animal Health Regulations in its Spring 2025 newsletter. This has resulted in many questions from local staff, project leaders and fairboards regarding the requirement of a negative EIA test for local events.

- KAR 9-7-14 establishes the requirement of a negative **EIA test** (Coggins) for horses that are changing ownership or are used for exhibition purposes which must be completed in the previous 12 months. This requirement includes horses that originate outside the state of Kansas **or from within** the state of Kansas.

From the Kansas Department of Animal Health:

K.A.R. 9-7-14

(2) "Exhibition" shall mean the commingling of animals for the purpose of showing or judging contest or any other type of public display, equidae used for team roping, penning, barrel racing, rodeo, or other performance events. (Authorized by K.S.A. 47-607d and 47-610; implementing K.S.A. 47-610; effective, E-76-28, Aug. 15, 1975; effective May 1, 1976; amended Jan. 23, 1998; amended Jan. 3, 2025.

What is a Coggins test?

- 'Coggins' is a common name for a blood test that is used to screen horses, mules and donkeys for a possibly fatal disease - Equine Infectious Anemia (EIA).

What is Equine Infectious Anemia (EIA)?

- EIA is an infectious, and potentially even deadly, virus that affects the immune system of animals in the equidae family.
- While some animals are able to carry the virus without showing symptoms, other horses will suffer from very severe symptoms of the disease including irregular heartbeats, swollen legs and abdomen, general weakness, anemia, a high fever and even sudden death.
- A herd outbreak of EIA can lead to catastrophic consequences which is why it is essential for horse owners to be diligent about testing for the disease.

How can my horse catch EIA?

- EIA is transmitted from one horse to another through mosquito bites, horse flies, deer flies or stable flies that have fed on a different infected animal. This means that your horse does not even need to have come into direct contact with an infected animal in order to contract this disease.
- Because flies are attracted to barns and other places that horses frequent, this extremely serious disease can be quickly and easily transmitted from one horse to another.

Where/How is a Coggins test performed?

- A veterinarian conducts a thorough exam of the horse and performs a blood draw. The blood is submitted to an accredited laboratory. Once the analysis is complete, the lab will forwards the results either directly to the owner, and/or to your veterinarian. Some veterinary clinics use digital Coggins testing technology. This means that the results of the test will be visible online, but can be printed.

Why is Coggins testing important and who should be testing?

- EIA is highly contagious and fatal. Responsible horse owners should test annually, especially if horses will be comingled with other horses.

An example of a Coggins certificate as well as additional information can be found here:

<https://www.ksvhc.org/services/equine/field/coggins.html>

4-H Scholarship Opportunities

Did you know that the Butler County 4-H Council has event scholarships available to all Butler County 4-H members?!

Scholarship Requirements:

- Any current 4-H member (includes Coverbuds) is eligible to apply for a scholarship.
- 4-H'ers are limited to 2 event scholarships per 4-H year.
- Completed forms are to be submitted to the Butler County Extension Office with event payment prior to event registration deadline.



Scholarship Details:

- If you did not submit a KAP and pin application *or* did not receive a pin within the past year for a \$100 scholarship
- Submitted a KAP and received a pin within the past year for a \$200 scholarship. Those that have already received their 10-year pin are exempt from pin requirement.

You can find the scholarship application here:

<https://www.butler.k-state.edu/4-h/Scholarships.html>

You can find more Kansas 4-H State Event Opportunities here:

<https://www.kansas4-h.org/events-activities/index.html>

2025 Butler County Fair Updates

*****NEW in 2025*****

- Updated Grievance Policy and Form
- Purple Ribbons Added for Livestock
- Updated Horse Classes
- Youth Must Be Present for Livestock and Static Judging
- Expanded STEM Guidelines
- Coggins REQUIRED for Horse Show
- Market Animal Registered Breed Classes
- Visual Art Exhibits Made From KITS Are for County Competition Only
- Projects Using the Lichtenberg Technique or "Fractal Burning" are NOT ALLOWED in Any Butler County Fair Exhibits in the 4-H/FFA Divisions

Livestock/ Project Auction Rules - *** You must attend (2) 4-H Club Meetings by July 14th to be eligible to participate in the Livestock/Project Auction at the 2025 Butler County Fair***



HPAI:

Highly Pathogenic Avian Influenza

Highly pathogenic avian influenza, or HPAI, is a rapidly spreading viral disease that can infect many types of birds. Avian influenza, often called avian flu or bird flu, can be common, but some strains are highly pathogenic, which means they are more deadly. Introduced by migrating wild birds, HPAI can spread through spring migration and affect **all** domestic poultry — small and backyard flocks as well as commercial industries.

Poultry with HPAI **do not** survive the illness. Vaccines for HPAI are not readily available.

Signs of Avian Influenza

- Coughing and sneezing
- Difficulty breathing
- Extreme depression
- Lack of energy
- Decrease in feed or water intake
- Swelling or purple discoloration of head, eyelids, comb, wattle and legs
- Decrease in egg production
- Sudden unexplained death

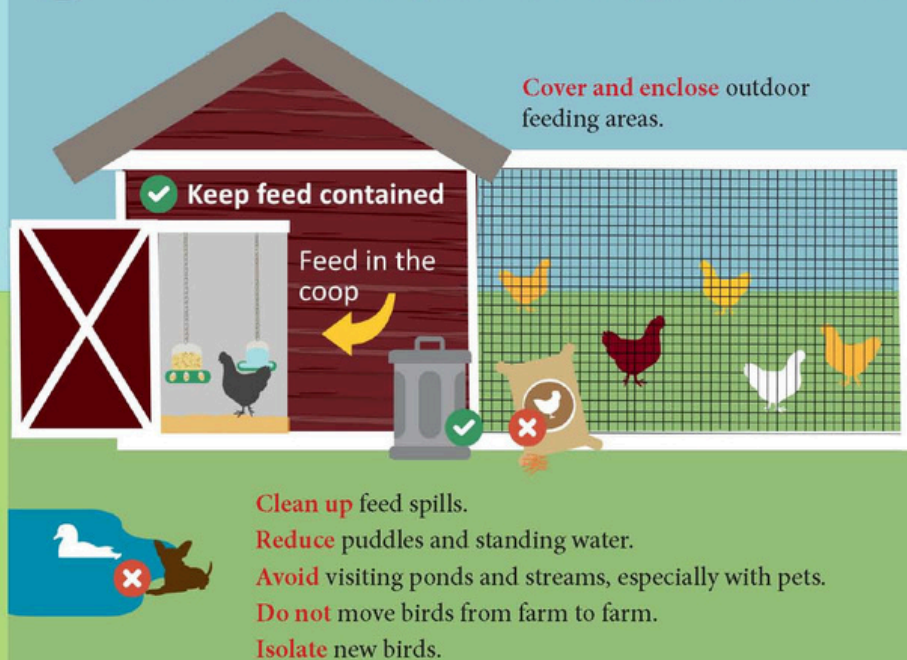
Biosecurity is your best option to prevent HPAI from entering your small or backyard poultry flock.

Here is what you can do:

Protect Your Small Flock from Avian Influenza

1

Avoid attracting wild birds and waterfowl to your home or farm. Song birds, sparrows, starlings, etc. are **low risk**.



2

Limit or **halt** travel with your birds to sales, shows and swaps.

Ensure you have clean hands, clothes, and footwear before handling your birds if you attend events. **Do not** allow others to handle your birds.



3

Limit your birds' visitors.

If someone must visit your birds: discuss where they have been. Have them wash their hands and wear clean clothes and footwear.



Call your veterinarian if your flock shows signs of influenza or you suspect exposure. No veterinarian? Call the Kansas Department of Agriculture's Division of Animal Health at 785-564-6601.



EAST PARK, EL DORADO, KS
FRIDAY, JUNE 27, 2025
3-6 pm

BUTLER COUNTY CHILDREN'S MENTAL HEALTH DAY!

Join us in celebrating the youth of Butler County and bringing awareness to children's mental health in this **FREE family fun event!**

**Food • Live Music • Kid and Teen Activities
Community Booths • Prizes • and MORE!**



**Follow Us On
Facebook for Updates!**



Hosted by:
South Central Mental Health Counseling Center

Cool Art with Math & Science

JUNE 9 JUNE 23 JULY 7
JUNE 16 JUNE 30

2:00 P.M. - 3:00 P.M.

**Whitewater Memorial
Library**

Origami, Tessellations, String Art,
Optical Illusions, and Structures

K-State Research and Extension is committed to providing equal opportunity for participation in all programs, services and activities. Program information may be available in languages other than English. Language access requests and reasonable accommodations for persons with disabilities, including alternative means for communication (e.g., Braille, large print, audio tape, and American Sign Language), may be requested by contacting the event contact Madeline Wallace four weeks prior to the start of the event (May 5, 2025) at 316-321-9660 or mgwallac@ksu.edu. Requests received after this date will be honored when it is feasible to do so. Language access services, such as interpretation or translation of vital information will be provided free of charge to limited English proficient individuals upon request.

Kansas State University Agricultural Experiment Station and Cooperative Extension Service
K-State Research and Extension is an equal opportunity provider and employer.



JOIN US FOR

CHOOSE HEALTH: FOOD, FUN, & FITNESS


K-STATE
Research and Extension
Butler County

July 1 - Replace Sugary Drinks
July 8 - Color Your Plate
July 29 - Power Up Your Day

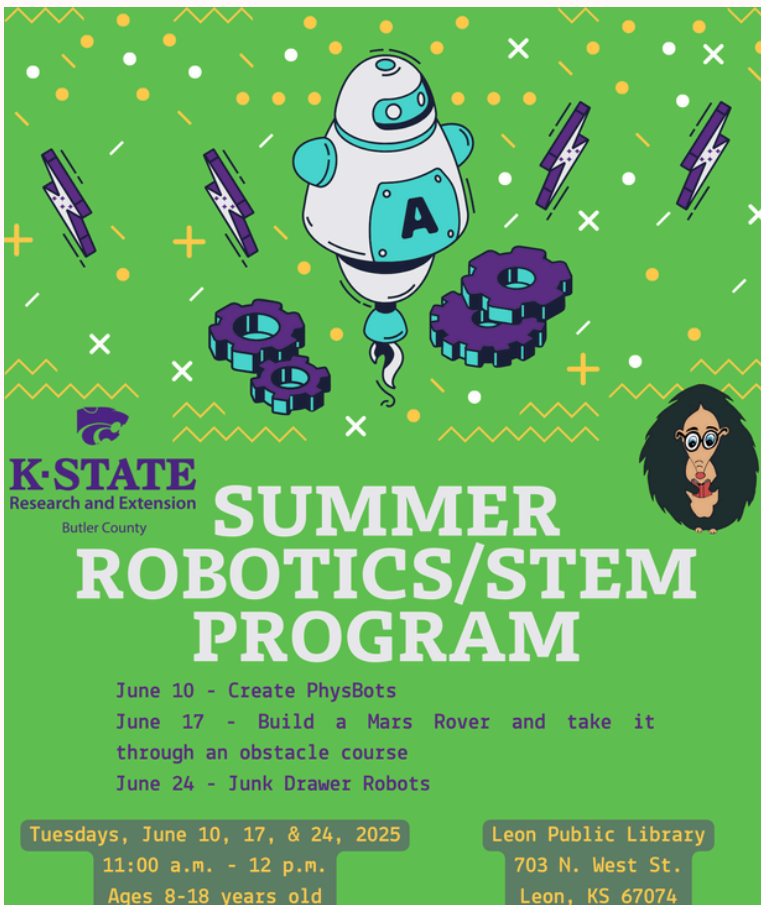


TUESDAYS, JULY 1ST, 8TH, & 29TH, 2025
11:00 A.M. - 12:00 P.M.
AGES 8-18 YEARS OLD

LEON PUBLIC LIBRARY
703 N. WEST ST.
LEON, KS 67074

K-State Research and Extension is committed to providing equal opportunity for participation in all programs, services and activities. Program information may be available in languages other than English. Language access requests and reasonable accommodations for persons with disabilities, including alternative means for communication (e.g., Braille, large print, audio tape, and American Sign Language), may be requested by contacting the event contact Madeline Wallace four weeks prior to the start of the event at 316-321-9660 or mgwallac@ksu.edu. Requests received after this date will be honored when it is feasible to do so. Language access services, such as interpretation or translation of vital information will be provided free of charge to limited English proficient individuals upon request.

K-State Research and Extension is an equal opportunity provider and employer.



K-STATE
Research and Extension
Butler County

SUMMER ROBOTICS/STEM PROGRAM

June 10 - Create PhysBots
June 17 - Build a Mars Rover and take it
through an obstacle course
June 24 - Junk Drawer Robots

Tuesdays, June 10, 17, & 24, 2025
11:00 a.m. - 12 p.m.
Ages 8-18 years old

Leon Public Library
703 N. West St.
Leon, KS 67074

Coffee Mugs Now Available!

Get yours today at the K-State Research and
Extension - Butler County Office
206 North Griffith, Suite A
El Dorado, KS 67042



\$10.00 Each

K-STATE
Research and Extension

Butler County

K-State Research and Extension is an equal opportunity provider and employer.