

THE 4-H NEWSLETTER

JULY
2025

A Minute with Madeline



What's After the Fair?

As the dust settles and the animals head home, you might be wondering—what happens after the county fair? While the county fair is one of the biggest events of the 4-H year, there are still several important steps and exciting opportunities ahead for 4-H members and families. Here's what comes next:

Record Books

Now's the time to reflect on all your hard work this year! Record books help 4-H members track their growth, set goals, and build valuable life skills. Whether you're new to record keeping or a seasoned pro, every member is encouraged to complete their records.

Attend the upcoming **record book workshop on August 27** to help guide you through the process. Need forms or help figuring out what to complete? Contact the Extension Office—we're here to support you!



A Minute with Madeline Cont.

Achievement Pins & Awards

Completing your record book opens the door to receiving annual recognition pins and other awards. From first-year members to senior leaders, there's a pin for every step of your 4-H journey. Members interested in earning an achievement pin should make sure to submit the proper forms by Monday, September 22 at 5 p.m.

Achievement Celebration

Mark your calendar! The annual Butler County 4-H Achievement Celebration is a time to recognize the effort, leadership, and dedication of our members, volunteers, and clubs. It's a night full of celebration and inspiration—details will be announced soon!

Kansas State Fair

If you have qualifying exhibits, don't forget the Kansas State Fair is right around the corner in September. Projects selected for the State Fair must be confirmed and entered by Wednesday, August 6, at 5 p.m. Watch for details from the Extension Office on how to prepare, transport exhibits, and attend.

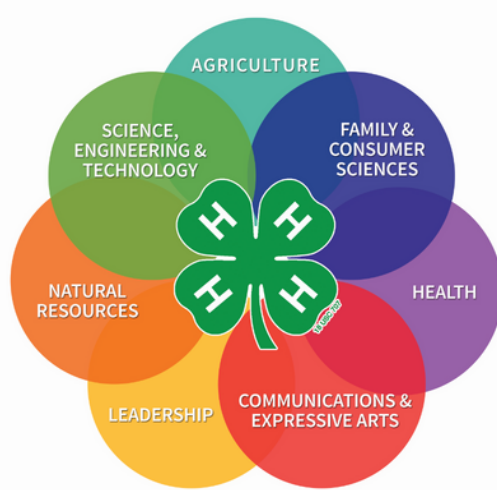


Stay Involved Year-Round

After the fair, many clubs gear up for new officer elections, service projects, and community events. Fall is also a great time to try new projects, recruit friends to join, or set goals for the year ahead. Leadership opportunities like the Butler County 4-H Council and Ambassadors will also open soon!

The county fair may be the highlight of summer, but it's not the finish line. It's the starting point for reflection, recognition, and re-energizing for the new 4-H year. Thank you for making this fair season a success—we can't wait to see what you'll do next!





LEADER'S LOUNGE

July Check-Up

- Encourage 4-H'ers to invite their friends to attend a meeting & join 4-H!
- Ask your 4-H parents to encourage others to get involved.

Review

- Read the 4-H Newsletter and mark important dates on the calendar
- Review highlights from the 4-H Newsletter at your club meeting
- 4-H/FFA Division Rules for the Butler County Fair (available [HERE](#))

Promote/Recruit

- Club participation at the County Fair
- Encourage your local community to come out to the fair!
- Coggins now required for Horse Project
- 4-H Camp at Rock Springs 4-H Camp

If your Club is planning to have a bake sale, fundraiser, make t-shirts, etc., please contact our office prior to doing so!

To-Do

- Help 4-H'ers plan and prepare projects for the fair
- Check in with Project Leaders to ensure they are on task and holding meetings
- Check club mailbox at the Extension Office
- Make sure 4-H Council report is given
- Check club's progress toward goals
- Speak with your club about doing a booth at Sunday Fun Day during the fair
- Remind families to "Subscribe" to the 4-H Online broadcast messages. This is where all newsletters and important information is sent out to families!
- Encourage club members to participate in the Extension Office School Supply Drive
- Check out the Kansas 4-H Club Resources page [HERE](#)

Remember

- Work with your co-leader!
- Make it a fun and rewarding year!
- 2 Meeting Requirement for the Butler County Fair Project Auction (by July 14th)



IMPORTANT DATES AND DEADLINES

July

- July 4: 4th of July - Extension Office Closed
- July 7: Superintendent Meeting
- July 11: Butler County Fair Fashion Revue
- July 11: Crowning of Butler County Fair King/Queen
- July 11: Extension Mug Mingle
- July 11: Club Quarterly Report Due
- July 11-28: K-State Extension Office School Supply Drive
- July 13: Butler County Fair Horse Show
- July 14: Butler County Fair Auction Meeting Requirement Deadline
- July 14-23: Extension Office Hours 8 a.m.-5 p.m.
- July 15: Kansas State Fair Grand Drive Entries Due at 12:00 p.m.
- July 17-22: Butler County Fair
- July 20: Kids Pedal Tractor Pull
- July 20: Special Champions Goat Show
- July 21-August 6: State Fair Entries Accepted at the Extension Office
- July 22: After-Fair Pool Bash
- July 24-25: Extension Office Closed

August

- August 6: Kansas State Fair Entry Due to the Extension Office
- August 7: State 4-H Wheat Expo - South Hutchinson
- August 15: Kansas State Fair Open Livestock (4-H Dairy Project) Entries Due
- August 16: State 4-H Horticulture Judging Contest - Manhattan
- August 23-24: 4-H Livestock Sweepstakes - Manhattan
- August 30: Kansas State Fair Dog Show - Hutchinson

September

- September 1: Labor Day - Extension Office Closed
- September 2: State Fair Project Drop-Off 3-6 p.m.
- September 3: State Fair Project Drop-Off 12-5 p.m.
- September 5-14: Kansas State Fair - Hutchinson
- September 9: 4-H Council Meeting
- September 20 State Archery Match - T.H.E. Wakarusa, KS
- September 22: KAPs and Pin Applications Due by 5 p.m.
- September 27 State Fall Small Bore/Muzzleloading Match - Topeka

See the full 2024-2025 Calendar [HERE](#)

Butler County Fair Dates and Deadlines

Strive to Thrive in 2025

The 2025 Butler County Fair dates have been set for July 17th-22nd, 2025!

Butler County Fair Rules

The 2025 4-H/FFA Division Rules are now available and posted! They can be found on our website at:

<https://www.butler.k-state.edu/4hfair/>

Pre-Entries

- Pre-Entries were required for all 4-H/FFA projects
- Cloverbuds will only need to pre-enter if participating in Fashion Revue
- Butler County will be using FairEntry once again this year for pre-entries
- Make sure you receive your confirmation e-mail!

Important Dates

- **July 1:** Dairy Doe Registration/Ownership Deadline*
- **July 14:** 4-H Meeting Requirement Deadline for Project Auction

*See the 2025 Butler County Fair 4-H/FFA Tagging Guidelines and Forms Table [HERE](#)

Butler County Fair Schedule

The 2025 Butler County Fair schedule is now available and posted! It can be found on our website at:

<https://www.butler.k-state.edu/4hfair/>





After-Fair

POOL

BASH

All 4-H'ers and Families Welcome!

**Tuesday, July 22
6:30 p.m. to 8:30 p.m.
El Dorado City Pool
\$1 per swimmer**

Hosted by the Cassoday Boosters 4-H Club



2025 Kansas State Fair Information

Dairy Exhibitors:

- ☐ Entries are not done through the Extension Office this year, they are all online through the Kansas State Fair.
- ☐ Kansas State Fair open class information and registration can be found here:



Volunteer Information:

If you would like to volunteer at the Kansas State Fair, please see the Extension Office to see where the needs are the greatest. This will also include the option to help with Centennial Hall set up on August 27th.

Ticket Ordering:

- ☐ Ticket ordering information will be coming soon! Keep an eye out for more information at the Butler County Fair!

Entry Information:

- ☐ The Butler County Extension Office will be accepting Kansas State Fair Entries through 5:00 PM on August 6th.
- ☐ Please read the General and Division rules in the State Fair Book. You can find a link to that here:
 - *To be eligible for State Fair entry you must* 1) Be 9 years old 4-H age and 2) Receive a purple ribbon at the Butler County Fair.
 - Division rules will detail any labeling and forms required for exhibits. Please read this carefully as accurate forms and labeling are the responsibility of exhibitors.
- ☐ Complete the entry collection form for your entries. Please make sure that you have all fields as required on the second page.
 - You can log into 4-HOnline to check each 4-Her's years in project. You can print this form and drop it off during office hours, mail it to our office, or attach it to an email. If you choose email, please send to both mgwallac@ksu.edu and aemclaughlin@ksu.edu.
- ☐ Entries may be dropped off at the 4-H Building on Tuesday, September 2nd from 3:00 – 6:00 p.m. AND Wednesday, September 3rd from 12:00 – 5:00 p.m. Further instructions about entry preparation for transit will be sent to exhibitors.
- ☐ Please note that some divisions, such as Fashion Revue and Visual Arts, only allow a certain number of entries per county. Those entries are preselected and eligible 4-Hers have been notified.



Riley G. State Project Award Winner



About Riley: Riley is a 13-year member of the Cassoday Boosters 4-H Club. She has been actively involved in the Dairy Goat, Foods and Nutrition, Horticulture & Landscape Design, Leadership, Meat Goat, Shopping in Style, and Visual Arts projects. In her club, Riley serves as a junior project leader, lending a helping hand to younger members as they begin their 4-H careers. On the county level, Riley has served for multiple years as a Butler County 4-H Ambassador where she promotes the 4-H program to local businesses and organizations, helps plan Ambassador activities, and serves as a role model to younger members. Outside of 4-H, Riley is involved in dance, bowling, kickball, and more! We are proud to know Riley and have her as a Butler County 4-H Member!

June 18, 2025

Kansas 4-H Names State Project Award Winners

*Annual awards announced during Emerald Circle celebration
K-State Research and Extension news service*

MANHATTAN, Kan. – The Kansas 4-H Youth Development program has recognized more than three dozen youth as state project award winners.

Sarah Maass, state leader for the Kansas 4-H program, said “being a state project winner indicates prior excellence and points to (youth’s) future potential.”

“Youth must display leadership skills and hearts for service by organizing events like community service projects, project meetings to share their expertise with younger 4-H members, and other unique efforts,” Maass said.

One state winner is selected yearly from the senior division (ages 14-18) in 45 project categories. Kansas 4-H youth submit a project report form, a summary of their work in a certain project.

Riley G. State Project Award Winner Cont.



Maass notes that in addition to learning new project skills, these youth must also demonstrate growth and strength in leadership, organization, civic engagement, and communication within the project.

Butler County – Riley Garcia, Dairy



Award winners were recognized during the Emerald Circle celebration, which was hosted for the first time this year by the State 4-H Office with funding provided by the Kansas 4-H Foundation. Officials say each state award winner's project report forms progress through county, regional and statewide evaluations before the state winner in each project area is named.

“We also know our 4-H members success does not come without the support of family, mentors, volunteers and Extension Agents who work with our 4-H Youth on the local level. The youth/adult partnership is evident at this level and we're grateful for the time our adults give to guide our 4-H youth.” said Amy Collins, program coordinator with Kansas 4-H.



State 4-H project award winners are also eligible to attend the National 4-H Congress in Atlanta, Georgia, in November. Numerous donors provide support for project winner's trip to the National 4-H Congress, through the Kansas 4-H Foundation.

For the full list of winners, read the original article here : <https://www.ksre.k-state.edu/news-and-publications/news/stories/2025/06/4h-project-award-winners.html>






BUTLER COUNTY FAIR EVENTS

BUTLER COUNTY FAIR

KIDS PEDAL PULL

Sunday July 20th



-  REGISTRATION AT 130PM
-  PULL STARTS AT 2PM
-  AGES 4-12 WITH WEIGHT CLASSES RANGING FROM 30-90 LBS
-  KANSAS STATE SANCITIONED PULL
-  TOP 3 PLACES IN EACH AGE DIVISION WILL GO ON TO THE KANSAS STATE FAIR IN SEPTEMBER!

STRIVE TO THRIVE
Butler County
Fair
July 17-21
2025
IN 2025

SPECIAL CHAMPIONS *Goat Show*

SUNDAY, JULY 20TH

- Show open to participants ages 14 and older with I/DD
- Participants will be paired with a 4-H/FFA goat exhibitor
- Entries are due by June 16
- More Information Coming Soon!!

Butler County Fair
EL Dorado, KS



Butler County Fair Board President Update

Butler County Fair Returns with Family Fun and 4-H Talent on Full Display

By Erin Burden, Fair Board President

The sights, sounds and spirit of summer are set to return as the Butler County Fair kicks off Friday, July 18, running through Monday, July 21 at the Butler County Fairgrounds in El Dorado. The festivities begin early with pre-fair events starting Friday, July 11th, featuring the always popular 4-H/FFA Fashion Revue and the 1st Annual Fair Queen Contest (El Dorado High School at 1:30 p.m.), sponsored by The Beauty Barn, Walter's Flowers, and Erin Burden, followed by the 4-H/FFA Horse Show on Sunday, July 13th (3 Wooden Crosses Arena at 6 p.m.). The remaining 4-H events are scheduled through the third weekend in July so there will be plenty of opportunity to come out and see the talented youth of Butler County compete in livestock shows, crafts, cooking, woodworking and more.

Keep an eye out for our amazing 4-H/FFA youth proudly wearing their Lime Green Fair Shirt, generously donated by Community National Bank! These bright shirts represent more than style – they symbolize youth leadership and hard work. A huge thank you to Community National Bank for supporting our future leaders!



Sunday, July 20th is designated as Sunday Funday. Join us for a fun-filled afternoon. Special thanks to Mark Johnson with Farm Bureau Financial Services Johnson Agency for sponsoring the Kids Tractor Pedal Pull. Registration for the pull starts at 1:30 p.m. and the pull starts at 2p.m. Event is open to kid's ages 4-12, weighing between 30-90lbs and the top 3 winners in each age division will move on to compete at the Kansas State Fair in September. We are excited to bring this event to our community – come cheer on the kids and enjoy the fun!

Stick around after the Pedal Pull for a heartwarming and inspiring event sponsored by Susan B. Allen Memorial Hospital. This year, the Fair Association is proud to partner with Flinthills Services, Inc. to present a Special Champions Goat Show featuring some amazing participants from Flinthills Services. Come cheer on these incredible individuals as they showcase their hard work and love for animals. It's a celebration of community, inclusion and the spirit of the fair!

The fair concludes with a highlight event: the Annual Premium Auction, held Monday, July 21st at 7 p.m. at the Butler County Fairgrounds. This special evening gives the public a chance to support 4-H/FFA youth by purchasing a market animal or project at the auction, buyers are directly invested in the future of a 4-H/FFA youth – helping fund their education, future projects and personal growth. For those unable to attend in person the auction will also be available online at the same time through Sundgren Realty.

Supporters can also contribute through “add-on” donations to any participating youth. These donations can be made in any amount and are a meaningful way to show encouragement. Simply visit the sale clerk table after the auction to make your contribution.

None of this would be possible without the generous support of our County Commissioners, local businesses, and individuals. Their continued commitment to the fair ensures that this cherished event remains a vibrant part of our community. Your support of the Butler County Fair is deeply appreciated.

For a full schedule of events and updates, follow the Butler County KS Fair on Facebook.





RECORDBOOK WORKSHOP



**BUTLER
COUNTY
4-H
BUILDING**



**MAY 27TH
AUGUST 27TH**



**6:00 P.M. -
7:30 P.M.**

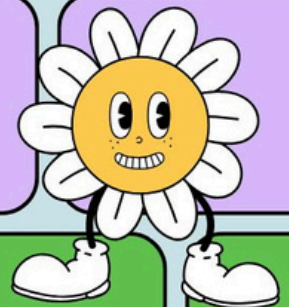
**PICK THE DATE THAT
WORKS FOR YOU!**



REGISTER VIA THE QR CODE

<https://forms.gle/QrjcmHTKqUWWj6Ym9>

**UNDERSTANDING THE
RUBRIC**



**WHAT EVALUATORS ARE
LOOKING FOR**



**GET FEEDBACK FROM THE
AGENT ON YOUR BOOK**

K-State Research and Extension is committed to providing equal opportunity for participation in all programs, services and activities. Program information may be available in languages other than English. Reasonable accommodations for persons with disabilities, including alternative means for communication (e.g., Braille, large print, audio tape, and American Sign Language) may be requested by contacting the event contact Madeline Wallace four weeks prior to the start of the event (April 29 and June 30, 2025) at mgwallac@ksu.edu or 316-321-9660. Requests received after this date will be honored when it is feasible to do so. Language access services, such as interpretation or translation of vital information will be provided free of charge to limited English proficient individuals upon request.

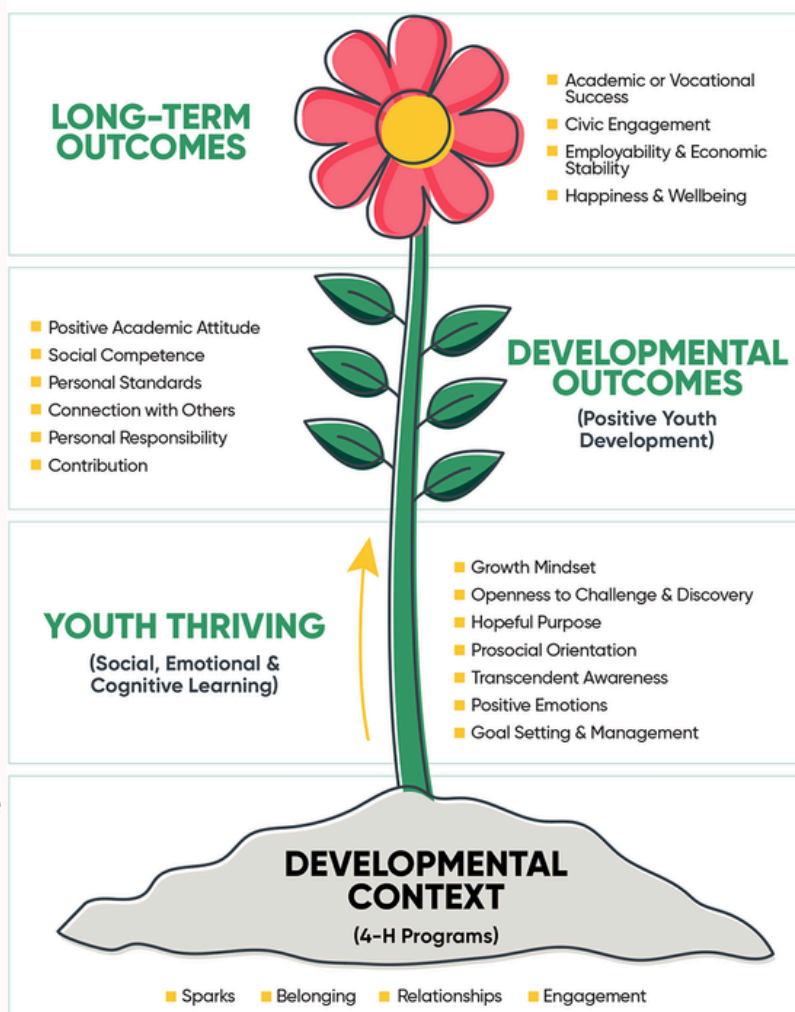
Kansas 4-H Thriving Study – We Want to Hear From 4-H Members!

Beginning mid-June, Kansas 4-H will be conducting the second wave of the 4-H Thriving Model evaluation. Members in grades 3 and up will be invited to participate in a survey to tell us about their experience in 4-H. The survey is designed to help Kansas 4-H understand how youth are thriving in 4-H. While the survey is optional, we would love to hear from every member.

Emails will be sent to the parents' emails we have on file in 4-H Online with an electronic survey link. Parents will be asked to share the electronic survey link with their child(ren).

Here are some key things to know:

- The goal is for the first survey to go out the week of June 16. Two reminders will be sent to all participants who have not completed the survey. The survey will close mid-July.
- This data will help us share the impact of 4-H programs in Kansas. By responding, your child(ren) will help us tell the story of Kansas 4-H.
- If you do not want your child(ren) to participate in this study, you can simply delete the message. There is no impact on 4-H programming, and Extension Agents will never know who completed and who did not complete the survey.
- Direct any questions to Samantha Grant (samgrant@ksu.edu), Evaluation Consultant, or Sarah Maass (semaass@ksu.edu), State 4-H Program Leader, or 785-532-5800.



Thank you for supporting Kansas 4-H as we continue “To Make the Best Better!”





CALLING ALL SWEET-TOOTHS

Want to Support Butler County 4-H?

Cakes and Pies and Bread, OH MY!

**COME OUT TO THE BUTLER COUNTY 4-H COUNCIL FOOD
AUCTION DURING THE BUTLER COUNTY FAIR!**

Friday, July 18th at 6:00 p.m.
200 North Griffith, El Dorado

K-STATE
Research and Extension



Butler
County

K-State Research and Extension is committed to providing equal opportunity for participation in all programs, services and activities. Program information may be available in languages other than English. Reasonable accommodations for persons with disabilities, including alternative means for communication (e.g., Braille, large print, audio tape, and American Sign Language) may be requested by contacting the event contact Madeline Wallace four weeks prior to the start of the event June 21, 2024 at 316-321-9660 or mgwallaceksu.edu. Requests received after this date will be honored when it is feasible to do so. Language access services, such as interpretation or translation of vital information will be provided free of charge to limited English proficient individuals upon request.

K-State Research and Extension is an equal opportunity provider and employer.

Club News

Livestock Judging Team

Congratulations to Butler County 4-H Members competing in the SE Area Livestock and Skillathon Judging Contest on June 3rd.

Skillathon Contest

Junior Team - 3rd Overall

Luke P, 6th Overall Jr.

Senior Team Member - Cora B, 7th

Livestock Judging Contest

Junior Team - 2nd Overall

Luke P, 5th

Jackson S, 10th

Luke O, 11th

Jack M, 12th

Case R, 26th

Senior Team Member

Cora B, 18th



Discovery Days



9 Butler County 4-H Members attended Discovery Days in Manhattan. This was held June 4th- 6th on the K-State Campus.

Flint Hills Club

Mayley D. and her horse, Bob, competed in the National Finals Junior High School Rodeo in Des Moines, Iowa. Mayley is a member of the Flint Hills 4-H club.

Submitted by Toby B. - Reporter



The Flint Hills 4-H club spent an afternoon mini golfing at Mega Pines in Andover.

Submitted by Toby B. - Reporter



2025 Butler County Fair

Updates to 4-H/FFA Divisions

1.

Updated grievance policy and form

2.

Purple ribbons added for livestock

3.

Updated Horse classes

4.

Youth must be present for livestock and static judging

5.

Expanded STEM guidelines

6.

Kits allowed in Visual Arts – county only competition

7.

Registered market livestock breed classes

8.

Disqualification for use of Fractal Woodburning

9.

Negative Equine Infectious Anemia (Coggins) test required for Horses

K-STATE
Research and Extension



Butler
County

Kansas State University Agricultural Experiment Station and Cooperative Extension Service
K-State Research and Extension is an equal opportunity provider and employer.

2025 Horse Project

The Kansas 4-H Horse ID Certificate (P1039) has been updated for the 2025 4-H program year. Beginning with the 2025 4-H program year, please use the new form and destroy previously used 4-H Horse ID Certificates. As a reminder, to properly identify your horse, complete the 4-H Horse ID Certificate, have your Extension Agent sign it and copy it. A COPY of the Horse ID Certificate is kept on file in the Extension Office and the 4-H Horse member maintains the ORIGINAL certificate. The original certificate is presented by the 4-H member to show staff for check-in at the local 4-H horse shows. **Beginning in 2025, registration papers WILL NOT be accepted to identify horses for the 4-H Horse project.** An example of the Horse ID Certificate is available online.



Additionally, the 4-H Horse Show Rulebook (S133) has been revised and is now available. Supplemental educational materials will also be released throughout the year to assist 4-H members, leaders and Extension staff with the 4-H Horse program.



Butler County 4-H Shooting Sports



Small Bore Rifle and Pistol practice will begin

Tuesday, June 3, 2025 at 6:00 p.m.

Practice will be held at Angela Cerney's home

Shotgun practice will begin

Saturday, June 14, 2025 at 8:30 a.m.

Archery practice will begin outdoor practices

Monday, June 2, 2025 at 6:30 p.m.

Shotgun & Archery practice will be held at
Michael Murphy & Sons
6400 SW Hunter Rd
Augusta, KS 67010

All Shooting Sports Members must have the following completed in order to be eligible to participate:

1. Be enrolled in the Shooting Sports Project in 4-H Online
2. Have a signed copy of the Shooting Sports Waiver turned into the Extension Office
3. \$20 Shooting Sports Project Fee paid at the Extension Office

Coggins Now Required for Horse Project

See reverse for more OMB information. FORM APPROVED - OMB NUMBER 0575-0127

U.S. DEPARTMENT OF AGRICULTURE
ANIMAL AND PLANT HEALTH INSPECTION SERVICE
EQUINE INFECTIOUS ANEMIA LABORATORY TEST
(10/10 Amendment 05/05)

1. ACCESSION NUMBER
2. DATE BLOOD DRAWN

3. REASON FOR TESTING
4. GEOGRAPHIC INFORMATION
5. VETERINARY LICENSE OR ACCREDITATION NO.
6. TEST TYPE
7. NAME AND ADDRESS OR STABLE/MARKET (Please print or type)
8. NAME AND ADDRESS OF OWNER (Please print or type)
9. NAME AND ADDRESS OF VETERINARIAN (Please print or type)
10. SIGNATURE OF FEDERALLY ACCREDITED VETERINARIAN
11. TYPE OR PREVIOUS USE OF HORSE
12. SIGNATURE DATE
13. SIGNATURE OF OWNER OR OWNER'S AGENT
14. SIGNATURE OF VETERINARIAN

15. HEAD
16. LEFT FORELEMB
17. RIGHT FORELEMB
18. LEFT HINDLEMB
19. RIGHT HINDLEMB

20. LABORATORY NAME/CITY/STATE
21. DATE RECEIVED
22. DATE REPORTED OUT
23. TEST RESULTS
24. REMARKS

Falsification of this form or knowingly using a falsified form is a criminal offense and may result in a fine of not more than \$10,000 or imprisonment for not more than 5 years or both (S.C. Section 1001).

VS FORM 10-11 (MAY 2009) (Replaces the VS 10-11 (4-90) and VS 10-11 (10-97), which may be used.)

The Kansas Department of Animal Health released an update to Kansas Animal Health Regulations in its Spring 2025 newsletter. This has resulted in many questions from local staff, project leaders and fairboards regarding the requirement of a negative EIA test for local events.

- KAR 9-7-14 establishes the requirement of a negative **EIA test** (Coggins) for horses that are changing ownership or are used for exhibition purposes which must be completed in the previous 12 months. This requirement includes horses that originate outside the state of Kansas **or from within** the state of Kansas.

From the Kansas Department of Animal Health:

K.A.R. 9-7-14

(2) "Exhibition" shall mean the commingling of animals for the purpose of showing or judging contest or any other type of public display, equidae used for team roping, penning, barrel racing, rodeo, or other performance events. (Authorized by K.S.A. 47-607d and 47-610; implementing K.S.A. 47-610; effective, E-76-28, Aug. 15, 1975; effective May 1, 1976; amended Jan. 23, 1998; amended Jan. 3, 2025.

What is a Coggins test?

- 'Coggins' is a common name for a blood test that is used to screen horses, mules and donkeys for a possibly fatal disease - Equine Infectious Anemia (EIA).

What is Equine Infectious Anemia (EIA)?

- EIA is an infectious, and potentially even deadly, virus that affects the immune system of animals in the equidae family.
- While some animals are able to carry the virus without showing symptoms, other horses will suffer from very severe symptoms of the disease including irregular heartbeats, swollen legs and abdomen, general weakness, anemia, a high fever and even sudden death.
- A herd outbreak of EIA can lead to catastrophic consequences which is why it is essential for horse owners to be diligent about testing for the disease.

How can my horse catch EIA?

- EIA is transmitted from one horse to another through mosquito bites, horse flies, deer flies or stable flies that have fed on a different infected animal. This means that your horse does not even need to have come into direct contact with an infected animal in order to contract this disease.
- Because flies are attracted to barns and other places that horses frequent, this extremely serious disease can be quickly and easily transmitted from one horse to another.

Where/How is a Coggins test performed?

- A veterinarian conducts a thorough exam of the horse and performs a blood draw. The blood is submitted to an accredited laboratory. Once the analysis is complete, the lab will forwards the results either directly to the owner, and/or to your veterinarian. Some veterinary clinics use digital Coggins testing technology. This means that the results of the test will be visible online, but can be printed.

Why is Coggins testing important and who should be testing?

- EIA is highly contagious and fatal. Responsible horse owners should test annually, especially if horses will be comingled with other horses.

An example of a Coggins certificate as well as additional information can be found here:

<https://www.ksvhc.org/services/equine/field/coggins.html>

4-H Scholarship Opportunities

Did you know that the Butler County 4-H Council has event scholarships available to all Butler County 4-H members?!

Scholarship Requirements:

- Any current 4-H member (includes Coverbuds) is eligible to apply for a scholarship.
- 4-H'ers are limited to 2 event scholarships per 4-H year.
- Completed forms are to be submitted to the Butler County Extension Office with event payment prior to event registration deadline.



Scholarship Details:

- If you did not submit a KAP and pin application or did not receive a pin within the past year for a \$100 scholarship
- Submitted a KAP and received a pin within the past year for a \$200 scholarship. Those that have already received their 10-year pin are exempt from pin requirement.

You can find the scholarship application here:

<https://www.butler.k-state.edu/4-h/Scholarships.html>

You can find more Kansas 4-H State Event Opportunities here:

<https://www.kansas4-h.org/events-activities/index.html>

4-H Scholarship Update

E.W. Nath

4-H Foundation Scholarship

The E.W. Nath 4-H Foundation Scholarship can now be used towards trade schools, professional programs, or technical degree programs. This scholarship is no longer limited to a two- or four-year college or university.



HPAI:

Highly Pathogenic Avian Influenza

Highly pathogenic avian influenza, or HPAI, is a rapidly spreading viral disease that can infect many types of birds. Avian influenza, often called avian flu or bird flu, can be common, but some strains are highly pathogenic, which means they are more deadly. Introduced by migrating wild birds, HPAI can spread through spring migration and affect **all** domestic poultry — small and backyard flocks as well as commercial industries.

Poultry with HPAI **do not** survive the illness. Vaccines for HPAI are not readily available.

Signs of Avian Influenza

- Coughing and sneezing
- Difficulty breathing
- Extreme depression
- Lack of energy
- Decrease in feed or water intake
- Swelling or purple discoloration of head, eyelids, comb, wattle and legs
- Decrease in egg production
- Sudden unexplained death

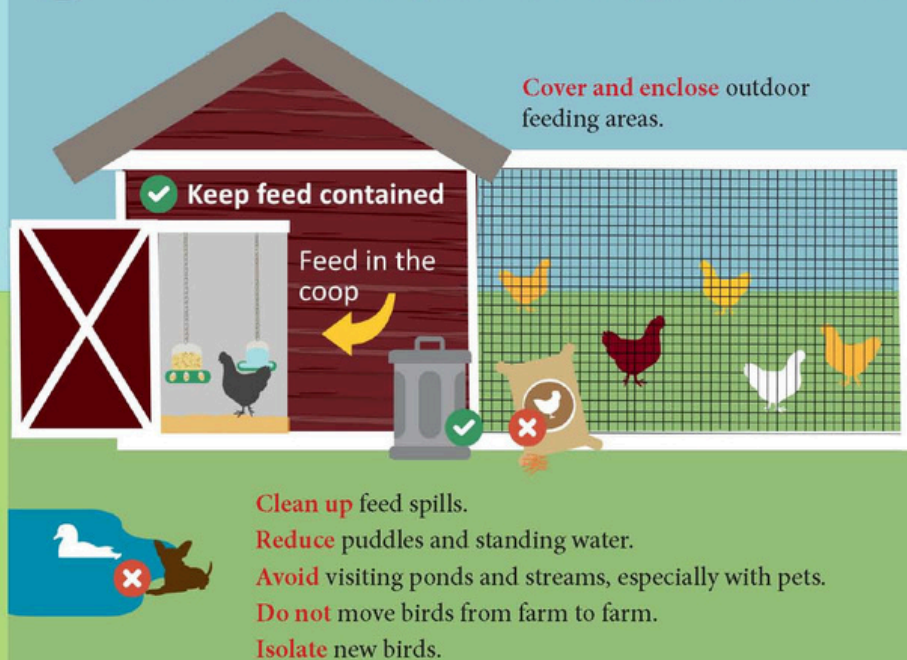
Biosecurity is your best option to prevent HPAI from entering your small or backyard poultry flock.

Here is what you can do:

Protect Your Small Flock from Avian Influenza

1

Avoid attracting wild birds and waterfowl to your home or farm. Song birds, sparrows, starlings, etc. are **low risk**.



2

Limit or **halt** travel with your birds to sales, shows and swaps.

Ensure you have clean hands, clothes, and footwear before handling your birds if you attend events. **Do not** allow others to handle your birds.



3

Limit your birds' visitors.

If someone must visit your birds: discuss where they have been. Have them wash their hands and wear clean clothes and footwear.



Call your veterinarian if your flock shows signs of influenza or you suspect exposure. No veterinarian? Call the Kansas Department of Agriculture's Division of Animal Health at 785-564-6601.



APPLY FOR
THE KANSAS
4-H YOUTH
LEADERSHIP
COUNCIL
TODAY



K-STATE
Research and Extension
Youth Leadership Council



The Kansas 4-H Youth Council and National 4-H Conference Applications are open! Any Kansas 4-H member between the ages of 14 and 18 before January 1, 2026, may apply as a Council Rep, and those 15-18 before January 1, 2026, may apply for National 4-H Conference.

Learn more here: https://kansas4h.org/educational-experiences/teen-leadership-opportunities/youth-leadership-council/?fbclid=IwY2xjawLH9M1leHRuA2FlbQIxMABicmlkETF1ZlJwRXdlVTf2UVJWeUZfAR5uf41Q-kwebxLzGr_nSG_W5xeOfntCrLowQJ-yorsuEUeOP4QAxbWI55BIUQ_aem_r7FumxMWcRycwmKfJLUwnA

The deadline will be October 1, 2025.

Cool Art with Math & Science

JUNE 9 JUNE 16 JUNE 23 JUNE 30 JULY 7

2:00 P.M. - 3:00 P.M.

Whitewater Memorial Library

Origami, Tessellations, String Art, Optical Illusions, and Structures

K-State Research and Extension is committed to providing equal opportunity for participation in all programs, services and activities. Program information may be available in languages other than English. Language access requests and reasonable accommodations for persons with disabilities, including alternative means for communication (e.g., Braille, large print, audio tape, and American Sign Language), may be requested by contacting the event contact Madeline Wallace four weeks prior to the start of the event (May 5, 2025) at 316-321-9660 or mgwallac@ksu.edu. Requests received after this date will be honored when it is feasible to do so. Language access services, such as interpretation or translation of vital information will be provided free of charge to limited English proficient individuals upon request.

Kansas State University Agricultural Experiment Station and Cooperative Extension Service
K-State Research and Extension is an equal opportunity provider and employer.



JOIN US FOR

CHOOSE HEALTH: FOOD, FUN, & FITNESS



July 1 - Replace Sugary Drinks
July 8 - Color Your Plate
July 29 - Power Up Your Day



TUESDAYS, JULY 1ST, 8TH, & 29TH, 2025
11:00 A.M. - 12:00 P.M.
AGES 8-18 YEARS OLD

LEON PUBLIC LIBRARY
703 N. WEST ST.
LEON, KS 67074

K-State Research and Extension is committed to providing equal opportunity for participation in all programs, services and activities. Program information may be available in languages other than English. Language access requests and reasonable accommodations for persons with disabilities, including alternative means for communication (e.g., Braille, large print, audio tape, and American Sign Language), may be requested by contacting the event contact Madeline Wallace four weeks prior to the start of the event at 316-321-9660 or mgwallac@ksu.edu. Requests received after this date will be honored when it is feasible to do so. Language access services, such as interpretation or translation of vital information will be provided free of charge to limited English proficient individuals upon request.
K-State Research and Extension is an equal opportunity provider and employer.

Join Us For Our 2025 Quarterly Extension Connection

Mug Mingle



Grab a mug and mingle with your local
Butler County Extension Staff
Friday, July 11th from 7:45-9:00 a.m.
Save the date for October 10th

K-State Research and Extension is an equal opportunity provider and employer.

Coffee Mugs Now Available!

Get yours today at the K-State Research and Extension - Butler County Office
206 North Griffith, Suite A
El Dorado, KS 67042



\$10.00 Each

K-STATE
Research and Extension

Butler County

K-State Research and Extension is an equal opportunity provider and employer.

SCHOOL SUPPLY *Drive*

Help empower young minds and support education
by participating in our School Supply Drive

Join us in making a positive
impact on students' lives in
Butler County by providing
them with the tools they need to
succeed in their academic
journey this fall.



Kickoff during Mug Mingle on
Friday, July 11th at 7:45 a.m.

ENDS MONDAY, JULY 28TH



K-State Extension
Butler County

**206 N GRIFFITH
SUITE A
EL DORADO, KS 67042**



K-STATE
Research and Extension



Butler
County

KANSAS STATE UNIVERSITY AGRICULTURAL EXPERIMENT
STATION AND COOPERATIVE EXTENSION SERVICE
K-STATE RESEARCH AND EXTENSION IS AN EQUAL
OPPORTUNITY PROVIDER AND EMPLOYER.

K-STATE
Research and Extension



Kansas 4-H WHEAT EXPO

This event is open to all 4-H & FFA members, Family Members,
4-H Leaders, Vocational Education Staff and Extension Staff.

**Thursday, August 7, 2025
9:00 am - 3:00 pm**

- **South Hutchinson Community Center
101 W. Avenue C, South Hutchinson, KS**
- **\$15/person registration
payable at the door**
- **Includes lunch, tours,
wheat judging, food contest,
photography contest
and judging contest!**





LUNCH & LEARN

Bring your lunch and join Horticulture Agent, Calla Edwards, over the lunch hour during our monthly Lunch & Learn Program. This will be held over the lunch hour and will cover a variety of horticulture topics.

July 9th
12:15-12:45 p.m.

Andover Public Library
1511 E. Central Ave.
Andover, KS

**July Topic: Troubleshooting
Issues in the Garden**

Learn how to identify and treat common vegetable garden issues.

Kansas State University Agricultural Experiment Station and Cooperative Extension Service
K-State Research and Extension is an equal opportunity provider and employer.



LUNCH & LEARN

Bring your lunch and join Horticulture Agent, Calla Edwards, over the lunch hour during our monthly Lunch & Learn Program. This will be held over the lunch hour and will cover a variety of horticulture topics.

August 18th
12:15-12:45 p.m.

Lori's EMPORIYum!
1604 Custer Ln.
Augusta, KS

**August Topic: Squash &
How to Use It**

Squash is a very fragile vegetable in the garden. Learn tips on preventing insect issues & recipes to use your surplus of squash this season.

Kansas State University Agricultural Experiment Station and Cooperative Extension Service
K-State Research and Extension is an equal opportunity provider and employer.