

The 4-H Forecaster

July 2015

Volume 2, Issue 7

K-State Research &
Extension Butler County

Inside this issue:

Leader's Lounge	2
Kansas State Fair	3
Record Keeping	3
Splish Splash	4
Important Deadlines	5
Shooting Sports	5
State Fair Ticket Info	6

Making a Difference



Can you believe, Fair is almost here! By the time you receive this newsletter, the Fair Fashion Revue will have already taken place! In this newsletter, you won't find specific Fair information. For that, please refer to the Butler County Fair Book!

You can also find the Fair Book online at: <http://www.butler.ksu.edu/doc25107.ashx>

Last year, I started talking about the *Seven Keys to Consider: Exceeding Family Expectation in 4-H Clubs* and this was based on: "*Inside the Magic Kingdom: Seven Keys to Disney's Success*" written by Tom Connellan. With Fair almost here, I want to recap Lesson 6—Reward, Recognize and Celebrate.

Motivation is something that as an employer, an organization, a group, etc. that we must embrace and build into a plan. Disney, for example, receives many letters from guests each year. Many of these letters refer to a cast member they interacted with while on their stay at Disney. The supervisor takes the letter and reads it aloud to the cast members within that department. The letter is then posted on a bulletin board for all to see.

The lesson here is to take time. How, you ask? What are you doing to recognize your club volunteers, your 4-H members, or your parents that are lending an extra hand.

With Fair upon us, take those few extra moments to tell a volunteer Thank You. Thank them for their help with a project, handing out cards, lining up the youth for various projects, etc.

Tell a youth good work with your project. Give them specific feedback. "...It looks like you put a lot of time into your project..." Ask them to tell you about their project. Some youth embrace the opportunity to share their stories! It's not the color of the ribbon that counts, but the time, effort, dedication and energy put forth to do those projects.

As parents, 4-H'ers, and leaders, we can all take those few extra moments to share our appreciation for others. Thank You for all that each of you do to help others out and lend those kind words of encouragement!

SEE YOU AT THE FAIR!!!!

~Charlene

Fair Clean-Up and Ribbon Money Pickup

When the last day of Fair arrives, everyone is tired and ready to go home. However, it is important to remember that we need to leave the facility as clean as, if not cleaner, than we found it in. Every 4-H'er who participated (non-livestock and livestock youth) in the Butler County Fair needs to be there to clean-up. As soon as clean-up is finished you will receive your money for the ribbons you earned at Fair! The more people to help, the quicker the clean-up goes. Here is a break-down of how Thursday morning works.

7:00 a.m. – 7:30 a.m. – Release and removal of all exhibits, displays & equipment from the buildings and barns.

7:30 a.m. – Clean of building and barns (Everyone is expected to help)

As soon as the building and barns are clean – Prize money is handed out down at the arena. This includes the prize money for the youth who only had exhibits in the buildings.

Community leaders and veteran 4-H families, please help share this information with the new 4-H families. It is everyone's responsibilities to get things cleaned up.

By the Way—Helping with Fair Set-Up/Clean up will enter your name into a drawing for a \$50 State Fair Gift Certificate!



Knowledge
for Life


K-STATE
Research and Extension

K-State Research and Extension is an equal opportunity provider and employer.

www.ksre.ksu.edu

Leader's Lounge

JULY CHECK-UP


The final countdown is on...fair, pin applications, KAP's, Annual Summaries, etc.!!! Where has the year gone? Where are we now? Let's take a look...

Review

- 4-H Forecaster* read and important dates marked on calendar.
- Review highlights from the *4-H Forecaster* at club meeting.

To-Do

- Check project leaders on progress.
- Ready for the County Fairs. Entry cards picked up and distributed to club members.
- Project Leaders conducting project meetings.
- Check club mailbox at the Extension Office.
- Continue...or start 4-H records
- Update 4-H Records, KAPs and Pin Applications.
- Annual Club Summary up-to-date



If your Club is wanting to have a bake sale fundraiser, please contact our office prior to doing so!

Promote/Recruit

- Parents' Committee recruiting "new" leaders.
- Preparing for fair: concession stand times confirmed; judging schedules confirmed.
- Encourage exhibiting at fair.

AUGUST CHECK-UP

- Celebrate the current 4-H year...begin planning for the club achievement party.
- Start planning for the new 4-H year.

Review

- 4-H Forecaster* read and important dates marked on calendar.
- Review highlights from the *4-H Forecaster* at your club meeting.

To-Do

- Project leaders notified of the specific responsibilities.
- Project Leaders conducting project meetings.
- Check club mailbox at the Extension Office.
- Begin planning for election of club officers.
- Have members think about projects for the new year.
- Check club's progress toward goals.

Promote/Recruit

- Parents' Committee recruiting Organizational Leaders and Project Leaders for the 2015-16 4-H year.
- Encourage Achievement Pin Award Applications.

Remember

- State Fair Pre-Entries Due to Extension Office by Friday, August 7, 5:00 PM**
- Record books, KAPS, Pin Applications and Club Summaries due in September!**

Kansas State Information

We haven't even made it through all of Fair and here we are talking about State Fair! Lots of important information is found below, so please read carefully, especially if you plan to participate in the State Fair!

TICKETS, ENCAMPMENT BUILDING & PARKING HANG TAGS

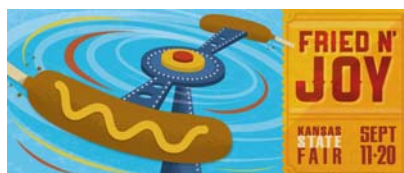
Attached to this newsletter is a ticket order form. Pay special attention to that and the deadline for turning it in to our office!

TAKING ENTRIES TO THE STATE FAIR

OPTION 1

If you are taking your 4-H entry to the State Fair yourself:

1. Turn in your State Fair Entry Form at the Extension Office by August 6.
2. Pick up entry cards (which we will receive from the state office sometime the end of August) at the Extension Office before going to the State Fair.



OPTION 2

If you want Charlene to take your 4-H exhibit to the State Fair: (SMALL, NON-BREATHING ITEMS ONLY! Due to limited space—anything requiring boxes or extra support cribbage to transport cannot exceed 12"x 12"x12" This does not include poster boards that can lay down flat):

1. Turn in your State Fair Entry Form at the Extension Office by August 7.
2. Bring your exhibit to the 4-H Building, between 1:00 p.m. and 4:00 p.m. on Thursday, September 3.

Exhibits **WILL NOT** be accepted before 1:00 p.m. due to not having any secure storage.

If you have any questions, do not hesitate to call the Extension Office at 316-321-9660.

CONGRATULATIONS to Renata Goossen and Cherokee Reagan!!! Renata won the SE Area Horticulture Judging Contest in Emporia on June 12th. Together, they brought home the 2nd place team spot!!! **FABULOUS** job ladies!

Record Keeping



Are you a new 4-Her or lost by record keeping?! Be sure to keep track of activities you are doing in each project! When it comes time to fill out the record book, you will have all the information ready to go, instead of having to dig for it! Remember, All forms can be found online.

If you haven't started filling out the forms, or have the forms, here is where to go:

- 1) www.butler.ksu.edu
- 2) Click on 4-H & Youth
- 3) Scroll down to records/awards/scholarships

There you will find all the forms. If you have questions, give your community leader a call. They can help you out. It's better to start now than wait for the next newsletter with deadlines approaching and not have started!

Happy Record Keeping!!



Splish Splash There's a Party Going On!!

All 4-H'ers and Families Welcome!!

**Friday, July 31, 6:30 to 8:30
El Dorado City Pool
\$1 per swimmer**

Hosted by the Cassoday Boosters 4-H Club

Shooting Sports

Hunter Education – The first Hunter Education Course is scheduled for Friday evening, August 7 from 6 to 9pm, and continuing on Saturday, August 8, from 8am to about 4pm. Pre-registration is required by contacting the Extension Office after July 1, but before August 6. Participants must pick up a student manual prior to start of the course, read each chapter, and answer all questions at the end of each chapter. This course is available to all youth age 11 and over, and to adults.

Rifle and Archery projects – Basic Rifle and Archery classes begin in September and will meet weekly through Thanksgiving. Rifle starts on Tuesday evening, Sept. 8, and Archery starts on Thursday evening, Sept. 10. Check-in is from 6:30 to 7pm and the classes run from 7 to 8pm. All equipment and supplies are provided. If Archery participants have their own bow that they prefer to shoot, they can bring it. If it is suitable, they may use it.

There is a \$15 fee for Rifle and a \$10 fee for Archery. Pre-registration is required by contacting the Extension Office and completing a Shooting Sports enrollment form. For questions, call Gene Maggard at 316-742-3746.



Important News and Deadlines



July 13—Supporter's Picnic

July 18—Fair Horse Show

July 25-30—County Fair

July 31—Kansas State Fair Horse entries due

August 7—State Fair Pre-Entries due into our office

August 7—Ticket order forms due into our office

August 22-23—4-H Livestock Sweepstakes in Manhattan

September 11-20—Kansas State Fair

September 30th—Current 4-H Year Ends

Oct. 1—New 4-H Year begins

October 2-4—Kansas Junior Livestock Show

Oct 10-11—48 Hours of 4-H

November 20-22—Kansas Youth Leadership Forum (14-18 years old)

K-State Research & Extension/Butler County

206 N. Griffith, Suite A
El Dorado, KS 67042
(316) 321-9660—office
www.butler.ksu.edu
Facebook: Butler County 4-H

Agent's

Dave Kehler, Ag Agent & Office Director

dkehler@ksu.edu

Charlene Miller, 4-H and Youth

cmmiller1@ksu.edu

Barb Roths, Family & Consumer Sciences

broths@ksu.edu

Larry Crouse—Horticulture

lcrouse@ksu.edu



From Left: Larry Crouse, Horticulture Agent, Barb Roths, Family and Consumer Science Agent, Charlene Miller, 4-H Youth Agent and Dave Kehler, Agriculture Agent

KANSAS STATE UNIVERSITY AGRICULTURAL EXPERIMENT STATION AND COOPERATIVE EXTENSION SERVICE.

K-State Research and Extension is an equal opportunity provider and employer. Issued in furtherance of Cooperative Extension Work, Acts of May 8 and June 30, 1914, as amended. Kansas State University, County Extension Councils, Extension Districts, and U.S. Department of Agriculture Cooperating, John Floros, Director.

All educational programs and materials available without discrimination on the basis of race, color, religion, national origin, sex, age, or disability.

"K-State Research and Extension is an equal opportunity provider and employer"